

426474

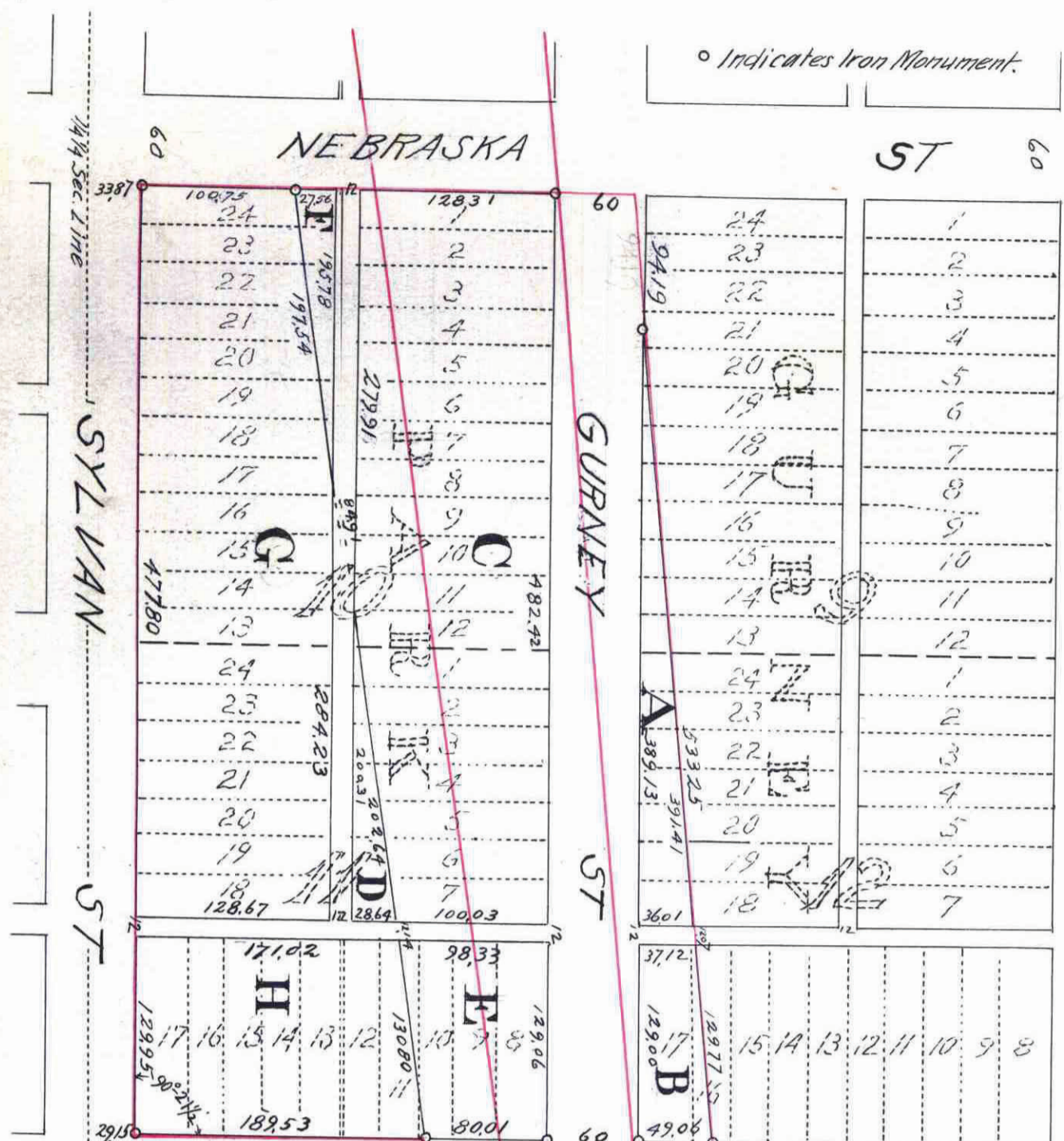
Surveyed By FOWBLE & FITZ, Civil Engineers and Surveyors, ST. PAUL, MINN.

426474

SOO LINE PLAT NUMBER 2

SCALE 1" TO 100'

NOTE: On plat, curve measurements mean chords. In description, " " " arcs.



I hereby certify to having surveyed and platted the property as described on this map as Soo Line Plat Number 2 and have placed iron monuments as shown on this map and the same is correct

Milton Fowble
Surveyor.

State of Minnesota } ss
County of Ramsey } On this 30th day of April A.D. 1912 before me personally appeared T. Milton Fowble to me known to be the person described in and who executed the foregoing instrument and acknowledged that he executed the same as his free act and deed

Notary Public Ramsey County, Minnesota
My Commission expires Dec. 2, 1915

This is to certify that the MINNEAPOLIS ST. PAUL & SAULT STE MARIE RAILWAY COMPANY, a corporation organized under the laws of the State of Minnesota, and the TRI-STATE LAND COMPANY, a corporation organized under the laws of the State of Minnesota, proprietors of the following described property, to wit:-

All of blocks 10 and 11 Gurney Park, Ramsey County, Minnesota, also all of those lots and portions of lots in blocks 9 and 12 of said Gurney Park described as follows; beginning at a point on the West line of said block 9, 94.19 feet South of the N.W. corner of said block, thence Southeasterly in a straight line 533.25 feet to a point on the South line of aforesaid block 12, 49.06 feet East of the S.W. corner thereof, thence West, on the South line of said block 12, 49.06 feet to the S.W. corner thereof, thence North, on the West line of said blocks 9 and 12, 530.13 feet to the point of beginning.

Also all of that part of the N.E. 1/4 of the S.W. 1/4 of Section 19 T.29 N. R.22 W. Ramsey County, Minnesota, described as follows; beginning at a point on the North line of said 1/4 Section 224 feet East of the N.W. corner of said N.E. 1/4 of S.W. 1/4 Section, thence Southeasterly with deflection of 81° 50' from 1/4 Section line, 404.95 feet, thence deflect to right 5° 10', 238.42 feet, thence on curve to left, radius 791.78 feet, 436.22 feet to the Northerly line of the right of way of the Northern Pacific Railway, thence Southeasterly on said right of way line, 353.26 feet more or less to the intersection with an East and West line extending parallel with the 1/4 1/4 Section line, and 165 feet North therefrom, thence East, on said parallel line, 11.40 feet, thence Northwesterly, on a curve to right with a radius of 666.78 feet, which radius subtends an angle of 57° 54' with said East and West line, running on said curved line a distance of 589.63 feet to point of compound curve, thence on curve to right, radius 2814.93 feet, 98.24 feet, thence on tangent 570.80 feet to a point on the North line of aforesaid 1/4 Section 186.96 feet East of the point of beginning, thence West 186.96 feet to the point of beginning, have caused the same to be surveyed and platted and hereafter known as Soo Line Plat Number 2, as shown by this plat.

Witness our hands and the corporate seals of the above named corporations this 23rd day of May A.D. 1912

In presence of MINNEAPOLIS, ST. PAUL & SAULT STE MARIE RAILWAY COMPANY

By *E. J. Erickson* President
W. J. Webster Secretary

In presence of TRI-STATE LAND COMPANY
 By *H. B. Dine* President
Henry B. Dine Secretary

State of Minnesota } ss
County of Ramsey } On this 23rd day of May A.D. 1912 before me personally appeared *E. J. Erickson* and *W. J. Webster* to me well known who being duly sworn did each say for himself that *E. J. Erickson* is the President and *W. J. Webster* is the Secretary of the MINNEAPOLIS ST. PAUL & SAULT STE MARIE RAILWAY COMPANY, a corporation and that the seal affixed to the foregoing instrument is the seal of said corporation and that said instrument was signed and sealed in behalf of said corporation by authority of its Board of Directors and the said *E. J. Erickson* and *W. J. Webster* acknowledged said instrument to be the free act and deed of said Corporation

Notary Public Ramsey County, Minnesota
My Commission expires Oct. 3, 1918

State of Minnesota } ss
County of Ramsey } On this 23rd day of May A.D. 1912 before me personally appeared *E. J. Erickson* and *Henry B. Dine* to me well known, who being duly sworn did each say for himself that *E. J. Erickson* is the President and *Henry B. Dine* is the Secretary of the TRI-STATE LAND COMPANY, a corporation and that the seal affixed to the foregoing instrument is the seal of said Corporation and that said instrument was signed and sealed in behalf of said corporation by authority of its Board of Directors and the said *E. J. Erickson* and *Henry B. Dine* acknowledged said instrument to be the free act and deed of said Corporation

Notary Public Ramsey County, Minnesota
My Commission expires Oct. 3, 1918

Accepted by the Assembly JUNE 20th A.D. 1912.
Accepted by the Board of Aldermen JUN. 18th A.D. 1912.
And approved JUNE 24th A.D. 1912.

Geo. J. Redington
City Clerk
of the City of St. Paul.

STATE OF MINNESOTA
County of Ramsey, Minn.
Office of the Register of Deeds.
This is to certify that the within instrument was filed for record in this office at St. Paul, on the day of August A. D. 1912, at 2 o'clock P. M., and that the same was duly registered in Book 30 of Deeds, Page 3.

Taxes for the year 1911 on the lands described within PAID
AUG 1 1912
J. C. FOOT, Treasurer
RAMSEY COUNTY, MINN.

CITY TREASURER'S OFFICE, ST. PAUL, MINN.
AUG - 6 1912
Assessment PAID
S. F. K. SCHMIDLER, City Treas.

This plat document is an UNOFFICIAL copy of a Subdivision Plat or Registered Land Survey and is made available for information purposes only.
To obtain an official copy please contact the Ramsey County Recorder's Office.

Accepted and approved this 17 day of June A.D. 1912.
George H. Harold
Charles H. Bronson
Julius Jordan
O. Claussen
Plat Commissioners
City Engineer

308