

This plat document is an UNOFFICIAL copy of a Subdivision Plat or Registered Land Survey and is made available for information purposes only.

To obtain an official copy please contact the Ramsey County Recorder's Office.



426478

# SOO LINE PLAT NUMBER 1

SCALE 1" TO 100'

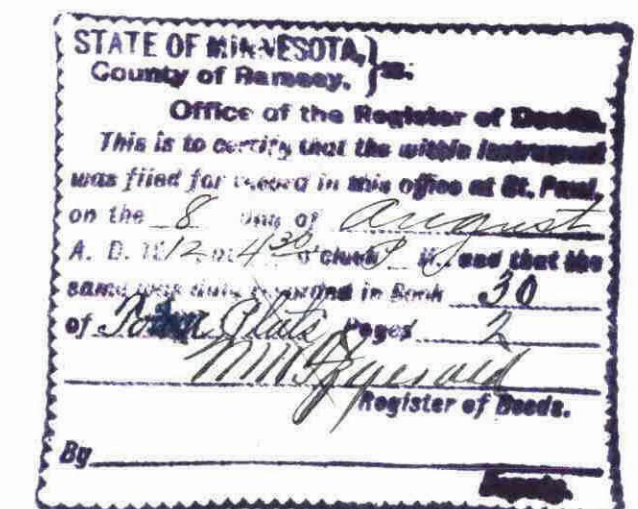
I hereby certify to having surveyed and platted the property as described on this map as SOO LINE PLAT NUMBER 1 and have placed iron monuments as shown on this map, and the same is correct

State of Minnesota }  
County of Ramsey } ss On this 30th day of April, A.D. 1912, before me personally appeared T. Milton Fowble to me known to be the person described in and who executed the foregoing instrument, and acknowledged that he executed the same as his free act and deed

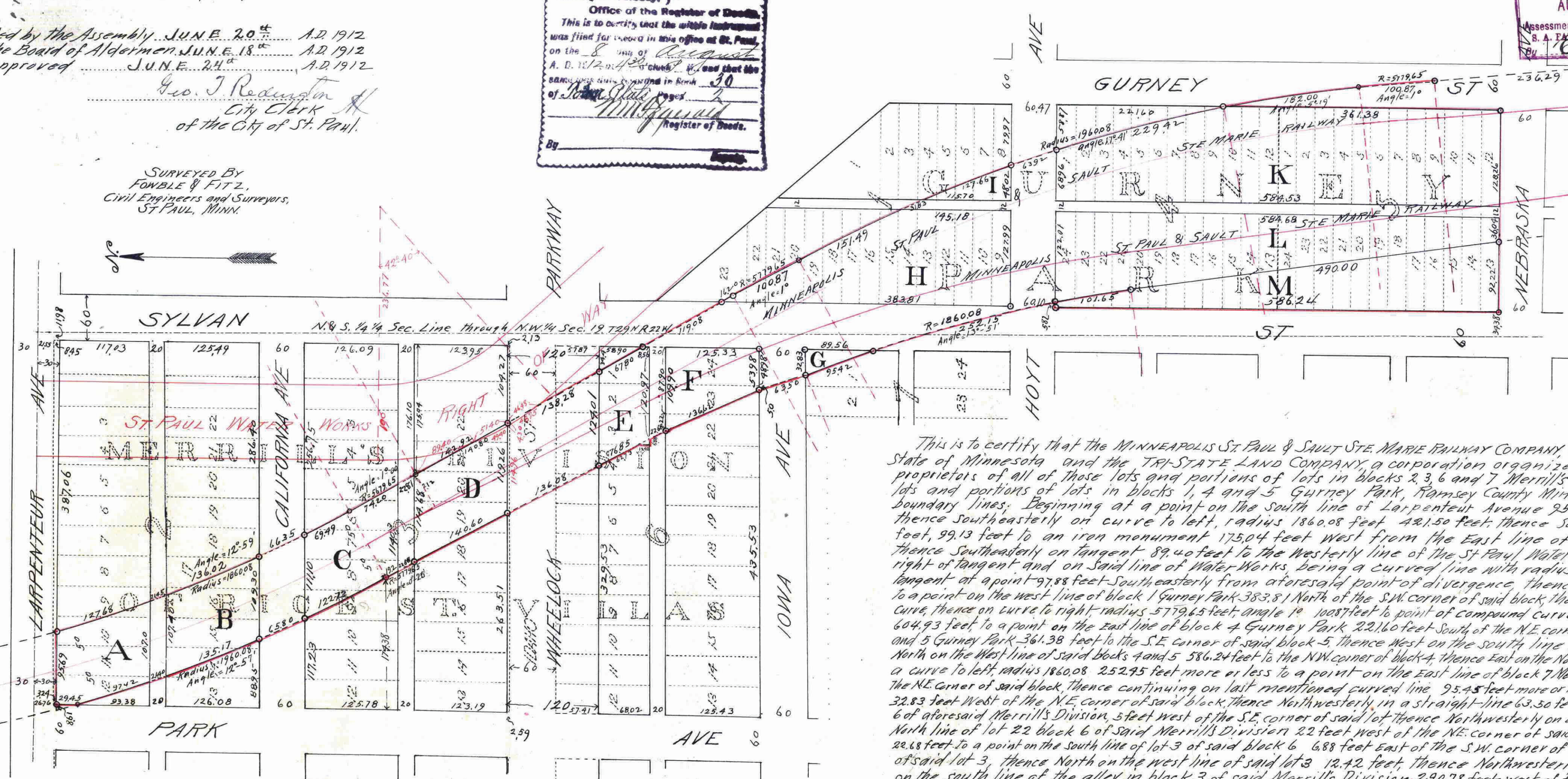
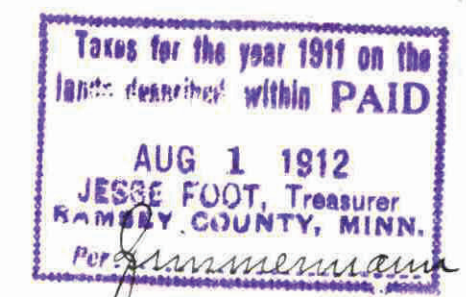
T. Milton Fowble  
Surveyor

Accepted and approved this 17th day of June, A.D. 1912  
George H. Leonard  
Charles H. Branson  
Jas. J. Jordan  
O. Blausen  
Plat Commissioners  
City Engineer

Accepted by the Assembly JUNE 20th A.D. 1912  
Accepted by the Board of Aldermen JUNE 18th A.D. 1912  
And approved JUNE 21st A.D. 1912  
Geo. J. Redington  
City Clerk  
of the City of St. Paul.



NOTE: On plat, curve measurements mean chords. In description, " " " arcs.



This is to certify that the MINNEAPOLIS ST. PAUL & SAULT STE. MARIE RAILWAY COMPANY, a corporation organized under the laws of the State of Minnesota and the TRI-STATE LAND COMPANY, a corporation organized under the laws of the State of Minnesota, proprietors of all of those lots and portions of lots in blocks 2, 3, 6 and 7, Merrill's Division of Rice Street Villas and all of those lots and portions of lots in blocks 1, 4 and 5, Gurney Park, Ramsey County Minnesota, embraced within the following described boundary lines: Beginning at a point on the South line of Larpenteur Avenue 95.69 feet east from the East line of Park Avenue, thence southeasterly on curve to left, radius 1860.08 feet, angle 12.57 degrees, thence southeasterly on curve to left, radius 3679.65 feet, angle 99.13 degrees to an iron monument 175.04 feet west from the East line of block 3, Merrill's Division of Rice Street Villas, thence southeasterly on tangent 89.40 feet to the westerly line of the St. Paul Water Works right of way, thence diverging to right of tangent and on said line of Water Works, being a curved line with radius of 336.77 feet, angle 98.15 degrees, intersecting aforesaid tangent at a point 97.88 feet southeasterly from aforesaid point of divergence, thence continuing on said tangent 278.68 feet to a point on the west line of block 1, Gurney Park 383.81 feet North of the SW corner of said block, thence continuing on said tangent 162.02 feet to a point of curve, thence on curve to right, radius 5779.65 feet, angle 10.108 degrees to a point of compound curve, thence on curve to right, radius 1960.08 feet, angle 17.51 degrees, 604.93 feet to a point on the East line of block 4, Gurney Park 221.60 feet South of the NE corner of said block, thence South on the East line of blocks 4 and 5, Gurney Park 361.38 feet to the SE corner of said block 5, thence West on the South line of said block 5, 28.52 feet to the SW corner thereof, thence North on the West line of said blocks 4 and 5, 586.24 feet to the NW corner of block 4, thence East on the North line of said block 4, 45.82 feet, thence Northwesterly on a curve to left, radius 1860.08, 252.95 feet more or less to a point on the East line of block 7, Merrill's Division of Rice Street Villas, 89.36 feet South of the NE corner of said block, thence continuing on last mentioned curved line, 95.45 feet more or less to a point on the North line of said block 7, 32.83 feet West of the NE corner of said block, thence Northwesterly in a straight line 63.50 feet to a point on the South line of lot 23, block 6 of aforesaid Merrill's Division, 5 feet West of the SE corner of said lot, thence Northwesterly on a straight line 136.62 feet to a point on the North line of lot 22, block 6 of said Merrill's Division, 22 feet West of the NE corner of said lot, thence Northwesterly on a straight line 22.68 feet to a point on the South line of lot 3 of said block 6, 688 feet East of the SW corner of said lot, thence West 6.88 feet to the SW corner of said lot 3, thence North on the West line of said lot 3, 12.42 feet, thence Northwesterly on a straight line 339.41 feet to a point on the South line of the alley in block 3 of said Merrill's Division, 290.78 feet West of the East line of said block 3, thence Northwesterly on curve to right, radius 5779.65 feet, angle 0.25 degrees, 41.88 feet to a point of compound curve, being 174.33 feet East of the West line of aforesaid block 3, thence Northwesterly on curve to right, radius 1960.08 feet, angle 12.57 degrees, 443.06 feet to a point on the West line of block 2 of said Merrill's Division, 29.45 feet South of the South line of Larpenteur Avenue, thence North on the West line of said block 2, 29.45 feet to the South line of Larpenteur Avenue, thence East on the South line of said Avenue 95.69 feet to the place of beginning, have caused the same to be surveyed and platted and hereafter known as SOO LINE PLAT NUMBER 1 as shown by this plat, and hereby dedicate to the public for public use forever all the streets, avenues, parkways and alleys as hereon indicated

State of Minnesota }  
County of Ramsey } ss On this 23rd day of May, A.D. 1912, before me personally appeared  
Henry B. Dineen, No me well known, who being duly sworn did each say for himself that  
Henry B. Dineen is the President and Secretary of the MINNEAPOLIS ST. PAUL & SAULT STE. MARIE RAILWAY COMPANY, a corporation and that the seal affixed to the foregoing instrument is the seal of said corporation, and that said instrument was signed and sealed in behalf of said corporation by authority of its Board of Directors and the said Henry B. Dineen acknowledged said instrument to be the free act and deed of said corporation

State of Minnesota }  
County of Ramsey } ss On this 23rd day of May, A.D. 1912, before me personally appeared  
Henry B. Dineen, No me well known, who being duly sworn did each say for himself that  
Henry B. Dineen is the President and Secretary of the TRI-STATE LAND COMPANY, a corporation and that the seal affixed to the foregoing instrument is the seal of said corporation, and that said instrument was signed and sealed in behalf of said corporation, by authority of its Board of Directors and the said Henry B. Dineen acknowledged said instrument to be the free act and deed of said corporation

In presence of  
M. Haulio  
J. J. J. J.  
In presence of  
J. J. J. J.  
M. Haulio  
MINNEAPOLIS ST. PAUL & SAULT STE. MARIE RAILWAY COMPANY  
BY  
Henry B. Dineen President  
Secretary  
TRI-STATE LAND COMPANY  
BY  
Henry B. Dineen Vice President  
Secretary

426478