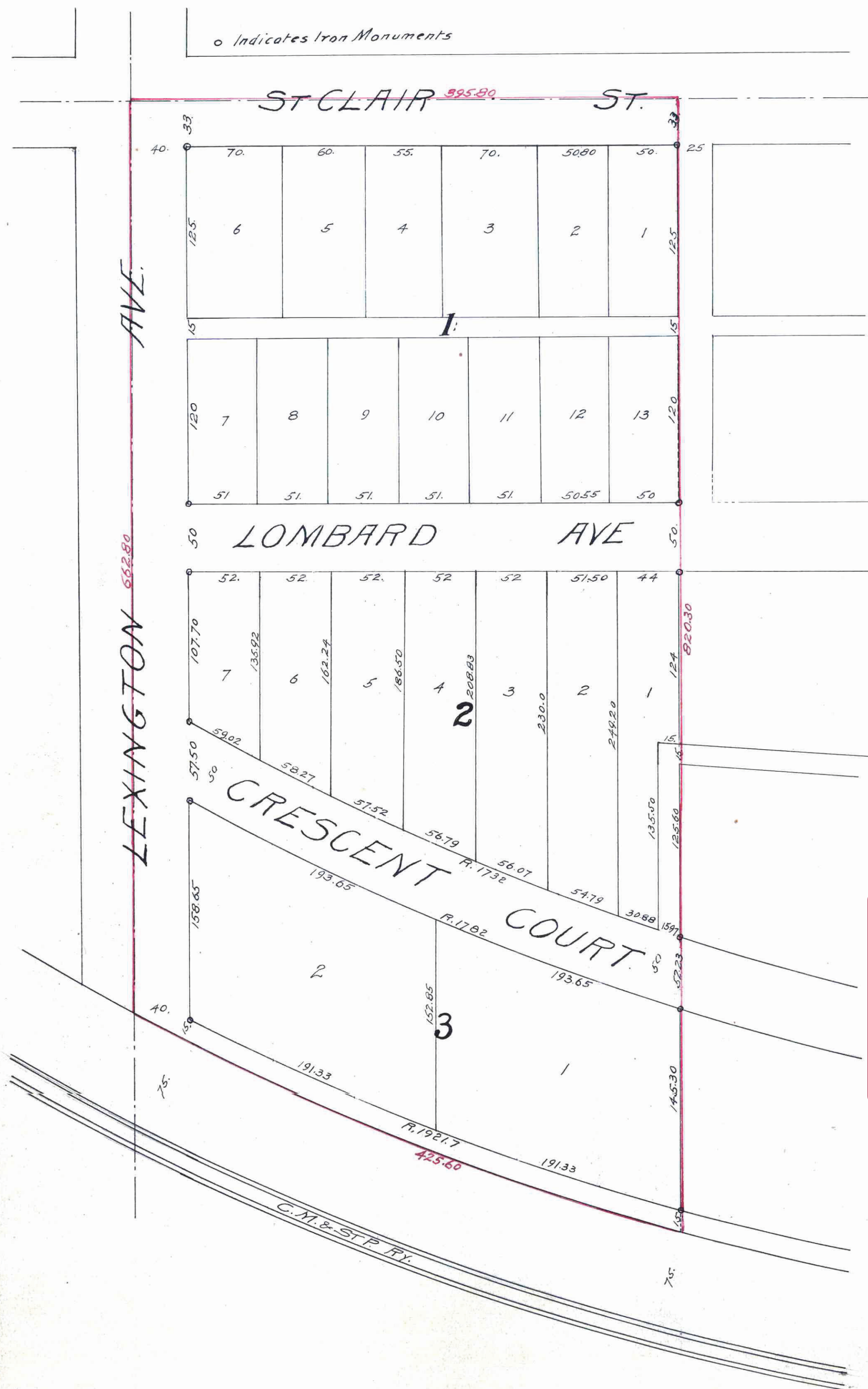


# SLAYTON'S ADDITION TO RIDGEWOOD PARK

Scale 60' = 1"

Edward R. Schafer,  
Surveyor.



St. Paul Minn April 2<sup>nd</sup> 1912.  
I hereby certify to having surveyed and platted the property as described on this map as 'SLAYTON'S ADDITION TO RIDGEWOOD PARK', and have placed iron monuments at the corners of each and every block, as shown on this map, and the same is correct.  
Edward R. Schafer,  
Surveyor.

State of Minnesota } s.s.  
County of Ramsey }  
On this 2<sup>nd</sup> day of April A.D. 1912 before me personally appeared Edward R. Schafer, to me known to be the person who executed the foregoing certificate, and acknowledged that he executed the same as his free act and deed.  
O. F. Moore  
Notary Public, Ramsey County, Minn.  
My commission expires Oct. 28, 1912

This is to certify that Sanford L. Wood, and Eva R. Wood his wife are the owners of that part of Lot 8, Sub. of Ayd's Farm, lying North of the Northernly line of the Chicago, Milwaukee & St. Paul Railroad Right of way, have caused the same to be surveyed and platted and here after known as 'SLAYTON'S ADDITION TO RIDGEWOOD PARK' as shown on this plat, and hereby dedicate to the public, and for the public use forever, all the streets, avenues, courts and alleys as hereon indicated.

Witness our hands and seals this 3<sup>rd</sup> day of April, A.D. 1912.  
In presence of:  
E. H. Slayton  
Sanford L. Wood  
Eva R. Wood

TAXES PAID  
AND TRANSFER ENTERED  
MAY 14 1912  
GEO. J. RIES, County Auditor.  
By Deputy

State of Minnesota } s.s.  
County of Ramsey }  
On this 2<sup>nd</sup> day of April A.D. 1912, before me personally appeared Sanford L. Wood, and Eva R. Wood, his wife, to me known to be the persons described in and who executed the foregoing instrument and acknowledged that they executed the same as their own free act and deed.  
J. A. Amati  
Notary Public, Ramsey County, Minn.  
My commission expires July 15, 1915.

CITY TREASURER'S OFFICE,  
ST. PAUL, MINN.  
MAY 14 1912.  
Assessment Paid  
S. A. FERGUSON, City Treas.  
By Schneider

Accepted and approved this 16<sup>th</sup> day of April A.D. 1912.  
J. H. Farley } Plat Commissioners.  
Jas. W. Jordan }  
O. Blausen } City Engineer.

Accepted by the Assembly April 18 1912.  
Accepted by the Board of Aldermen April 16 1912.  
Approved April 27 1912.  
Geo. J. Redington City Clerk.

Taxes for the year 1911 on the  
lands described within PAID  
MAY 14 1912  
JESSE FOOT, Treasurer  
RAMSEY COUNTY, MINN.  
Per

This plat document is an UNOFFICIAL copy of a Subdivision Plat or Registered Land Survey and is made available for information purposes only.  
To obtain an official copy please contact the Ramsey County Recorder's Office.

DOCUMENT NUMBER 10662  
CERTIFICATE NUMBER 19117  
BOOK 27 PAGE 233  
STATE OF MINNESOTA,  
County of Ramsey,  
OFFICE OF THE REGISTRAR OF DEEDS  
This is to certify that the foregoing plat was filed in this office on the 10<sup>th</sup> day of May 1912 at 10 o'clock A.M.  
M. J. Quinn  
Registrar of Deeds

10442

19