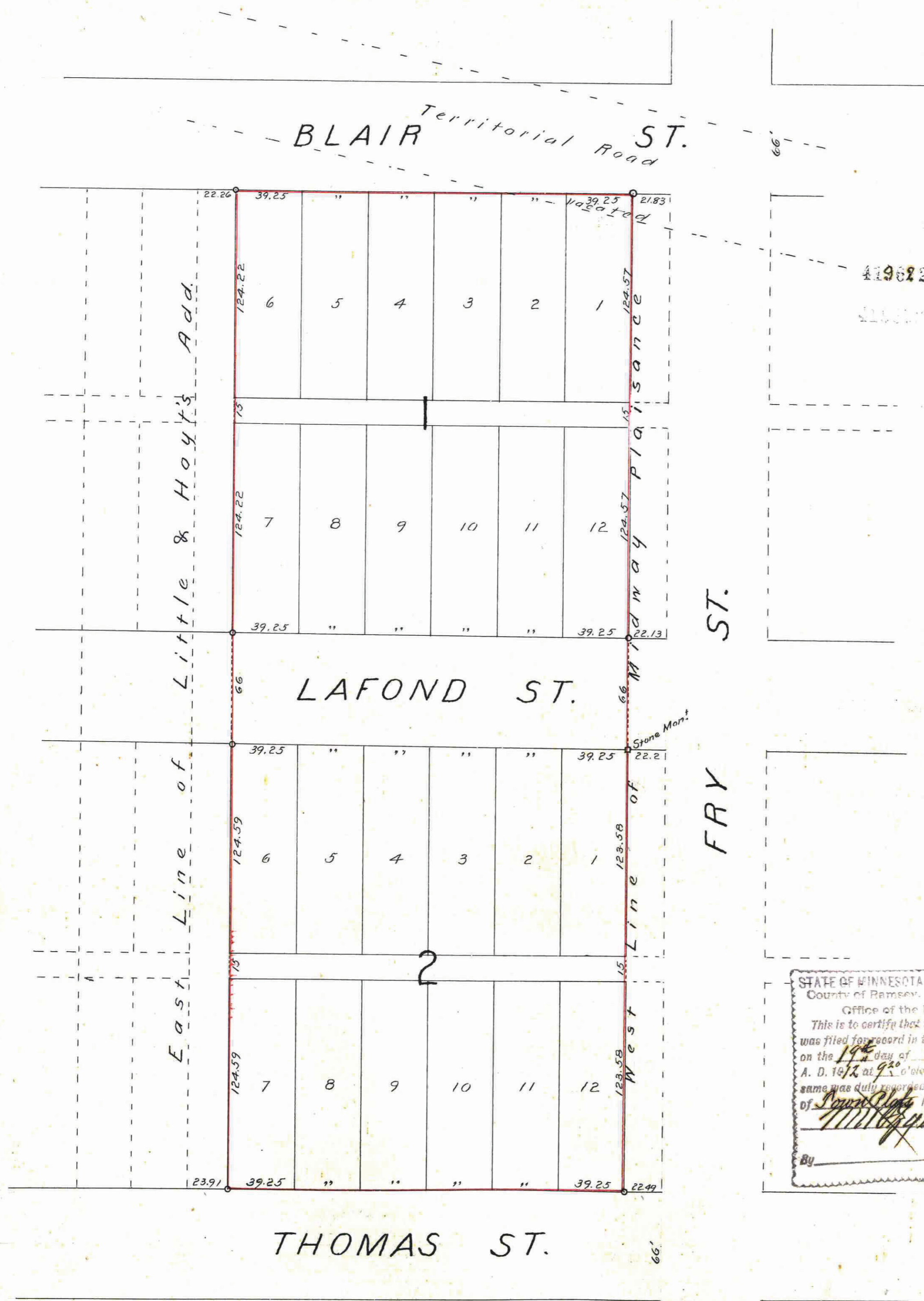


# PAUL MARTIN'S GROVE ADDITION

o INDICATES IRON.  
Scale 50' per INCH.

ST. PAUL MINN.  
Scale 1 In. to 50 Ft.

Pedersen & Woodruff  
Surveyors



We hereby certify to having surveyed and platted the property as described on this plat as PAUL MARTIN'S GROVE ADDITION, and have placed iron monuments at the corners of every block, as shown hereon, and the same is correct.

*Jens Pedersen*  
*Wm. W. Woodruff*  
Surveyors

State of Minnesota }  
County of Ramsey }

On this 31 day of Jan'y 1912 personally appeared before me, the undersigned, Jens Pedersen and M. W. Woodruff, to me well known, and acknowledged that they executed the foregoing certificate as their free act and deed.

*J. P. Moore*  
Notary Public, Ramsey Co. Minn.  
My commission expires Dec. 28, 1912

This is to certify that the St. Paul Land and Cottage Co., a corporation, proprietor of the east 235.5 feet and that part of Territorial Road, vacated, adjoining lot 13 on the Northeast, of Lot 13 of Minney's Outlots, has caused the same to be surveyed and platted and hereafter known as PAUL MARTIN'S GROVE ADDITION, as shown by this plat, and hereby dedicates to the public, for public use forever, all the streets and alleys as hereon indicated.

In witness whereof said corporation has executed this instrument by its duly authorized officers and has caused its corporate seal to be affixed this 31 day of January A.D. 1912.

St. Paul Land and Cottage Company

*George C. Knispel* President  
*Henry Martin* Secretary

State of Minnesota }  
County of Ramsey }

On this 31 day of January A.D. 1912 personally appeared before me, the undersigned, Geo. C. Knispel and Henry Martin, to me well known, who, being by me duly sworn, did say that they are the President and Secretary respectively of the St. Paul Land and Cottage Company, and that the seal affixed to the above instrument is the corporate seal of said company, and that said instrument was signed and sealed in behalf of said company by authority of its board of directors, and said Geo. C. Knispel and Henry Martin acknowledged said instrument to be the free act and deed of said corporation.

*Paul Martin*  
Notary Public, Ramsey Co., Minn.  
My commission expires June 25, 1914

Accepted and approved this 19th day of Feb'y A.D. 1912

*J. H. Jordan* } Plat Commissioners  
*J. H. Harry* }  
*O. Claussen* City Engineer

Accepted by the Assembly Mar. 9 1912  
" " " Board of Aldermen Feb. 20 1912  
Approved Mar. 12 1912  
*Geo. J. Redington*  
City Clerk

STATE OF MINNESOTA  
County of Ramsey }  
Office of the Register of Deeds  
This is to certify that the within instrument was filed for record in this office at St. Paul, on the 19th day of March A. D. 1912 at 9 o'clock A. M. and that the same was duly recorded in book of *Special City* Pages *149*  
*M. J. [Signature]*  
Register of Deeds.  
By \_\_\_\_\_ Deputy.

This plat document is an UNOFFICIAL copy of a Subdivision Plat or Registered Land Survey and is made available for information purposes only.  
To obtain an official copy please contact the Ramsey County Recorder's Office.



TAXES PAID  
By Rate on Land Deeds, etc. WITHIN AND TRANSFER ENTERED  
MAR 18 1912  
*Geo. J. Ries*, Co. Auditor,  
*[Signature]* Deputy

CITY TREASURER'S OFFICE,  
ST. PAUL, MINN.  
MAR 18 1912  
Assessment PAID  
By *[Signature]*

Taxes for the year 1911 on the lands described within PAID  
MAR 18 1912  
*Jesse Foot*, Treasurer  
RAMSEY COUNTY, MINN.  
*[Signature]*

419622