

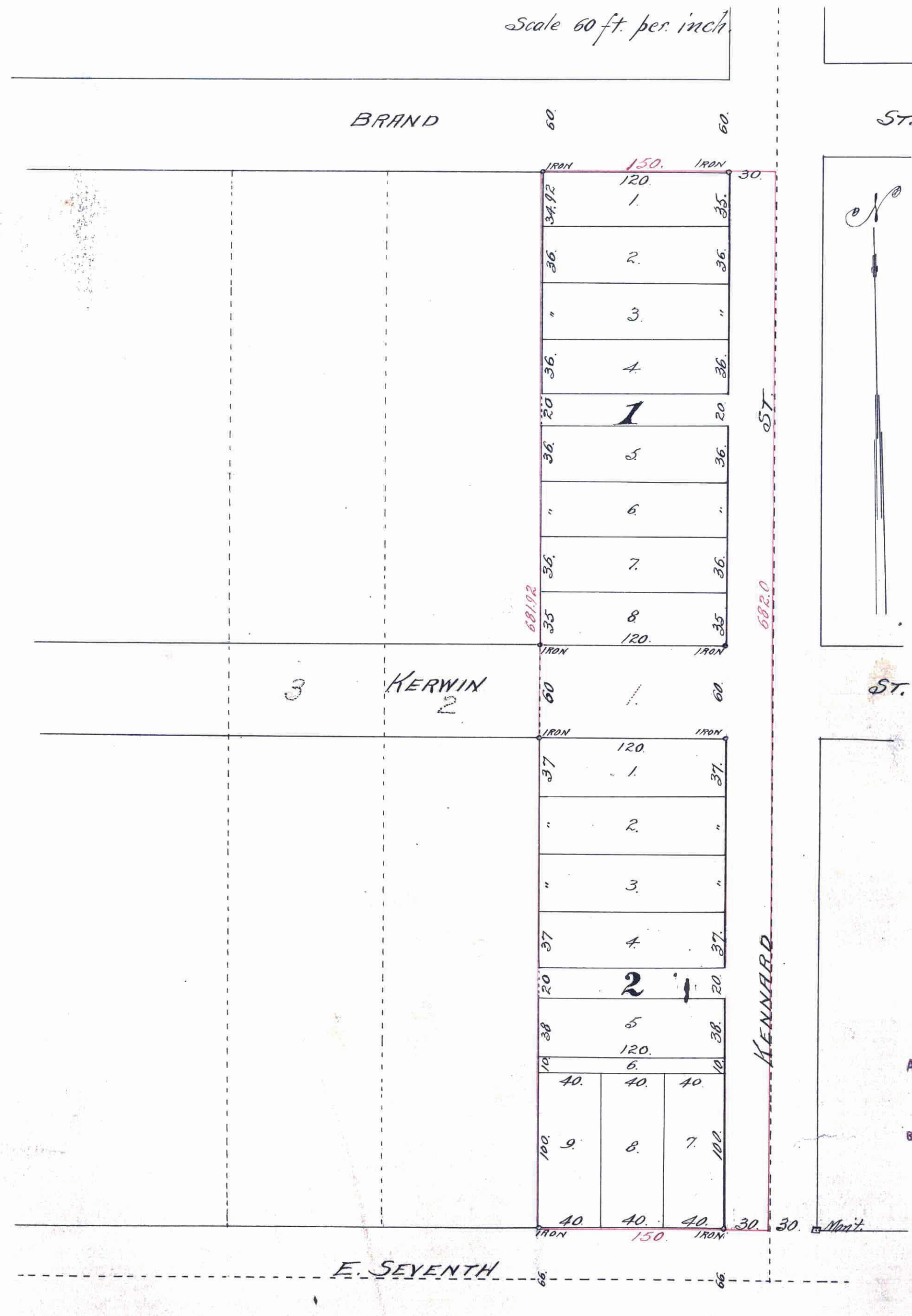
ALBRIGHT ADDITION.

ST. PAUL, MINN.

JOHN B. IRVINE, SURVEYOR.

JAN. 1912.

Scale 60 ft. per inch.



I hereby certify to having surveyed and platted lot 1, block 2, Cruickshank's Garden Lots and described on this map as ALBRIGHT ADDITION and have placed iron monuments at the corners of each block as shown on this map and the same is correct.

John B. Irvine
Surveyor.

State of Minnesota } On this 24th day of January A.D. 1912 personally
County of Ramsey } appeared before me the undersigned John B. Irvine, to
me well known and acknowledged that he executed the foregoing certificate
as his own free act and deed.

Geo. Mardward
Notary Public
Ramsey County, Minnesota

My Commission Expires Oct. 15th 1915.

This is to certify that Frank R. Albright (unmarried) is the owner of lot one block two Cruickshank's Garden Lots, has caused the same to be surveyed and platted, and hereafter known as ALBRIGHT ADDITION as shown by this plat and hereby dedicate to the public, and for public use forever all the streets, avenues and alleys as here in indicated.

Witness my hand and seal this 31st day of January A.D. 1912.

In presence of
John E. Cooney } Frank R. Albright
Otto Garbert }

State of Minnesota } On this 31st day of January A.D. 1912 personally
County of Ramsey } came before me the undersigned Frank R. Albright, to
me well known and acknowledged that he executed the foregoing certificate
as his own free act and deed.

John E. Cooney
Notary Public
Ramsey County, Minnesota

My Commission Expires May 21, 1918

Accepted and Approved this Nineteenth day of February A.D. 1912

James Gordon } Plat Commission
O. Claussen } City Engineer.

Accepted by the Board of Aldermen Feb 20th A.D. 1912
Approved by the Assembly MARCH 9th A.D. 1912
Approved. MARCH 12th A.D. 1912

George J. ...
City Clerk

TAXES PAID
AND TRANSFER ENTERED
MAR 4 1915
GEO. J. RIES, COUNTY AUDITOR
By [Signature] Deputy

DEPARTMENT OF FINANCE.
ST. PAUL, MINN.
MAR 5 - 1915
Assessment PAID
S. A. FARNWORTH, Commissioner.
By [Signature]

Taxes for the year of 1914 on the
lands described within PAID
MAR 3 1915
Martin J. O'Malley, Treasurer,
RAMSEY COUNTY, MINN.
Per [Signature]

DOCUMENT NUMBER 19100

CERTIFICATE NUMBER 7214
BOOK 24 PAGE 275
STATE OF MINNESOTA
County of Ramsey
OFFICE OF THE REGISTRAR OF TITLES,
This is to certify that the within instrument
was filed in this office at St. Paul, on the
12th day of March A. D. 1912
at [Signature]
By [Signature] Deputy.

This plat document is an UNOFFICIAL copy of a Subdivision Plat or Registered Land Survey and is made available for information purposes only.
To obtain an official copy please contact the Ramsey County Recorder's Office.

17100