

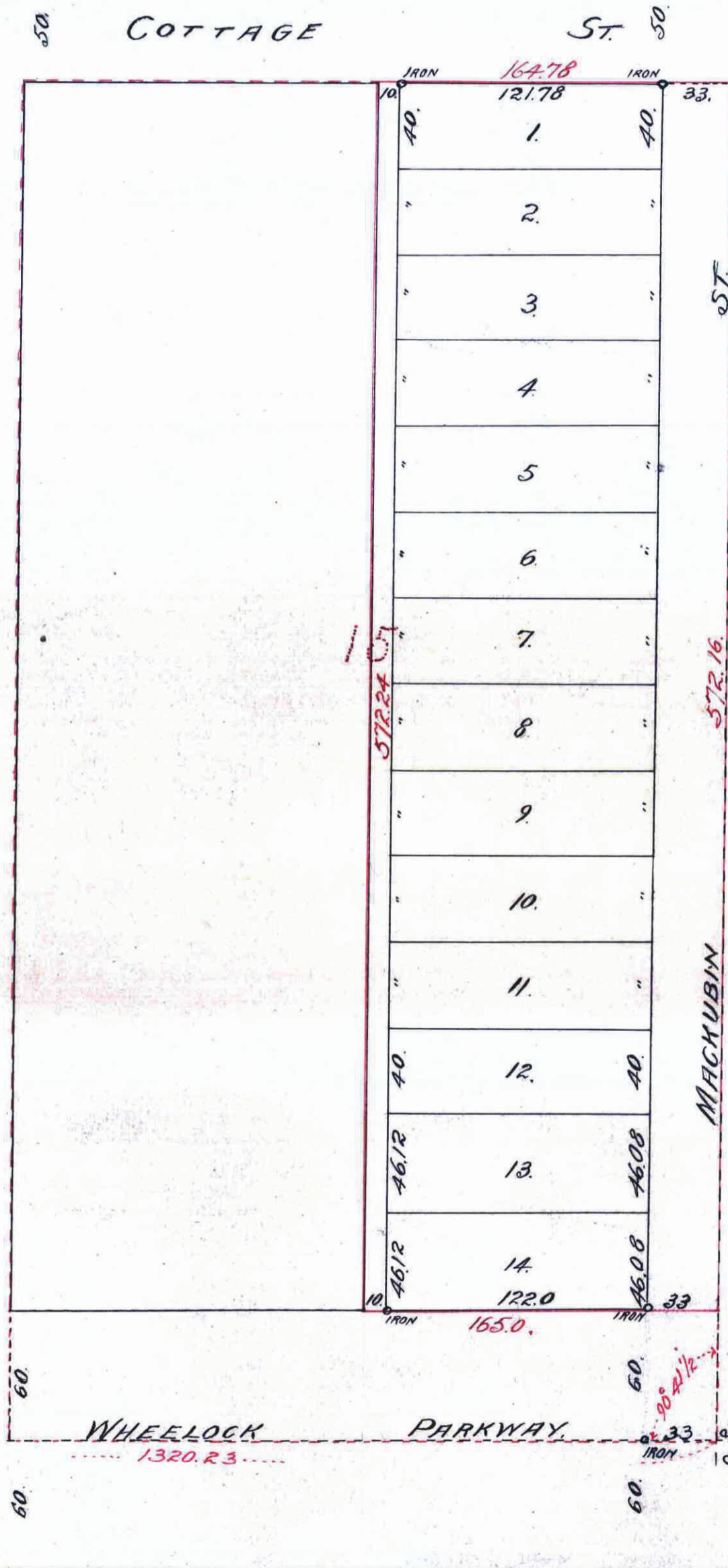
SCHLETTI ADDITION.

ST. PAUL, MINN.

JOHN B. IRVINE, SURVEYOR.

DEC. - 1911.

SCALE 60 ft. per inch.



This plat document is an UNOFFICIAL copy of a Subdivision Plat or Registered Land Survey and is made available for information purposes only.

To obtain an official copy please contact the Ramsey County Recorder's Office.

STATE OF MINNESOTA, ss: County of Ramsey, Office of the Registrar of Deeds. This is to certify that the within instrument was filed for record in this office at St. Paul, on the 14 day of March A. D. 1912 at 2:55 o'clock P. M., and that the same was duly recorded in Book of Deeds Page 137 By M. J. Wald Registrar of Deeds. Deputy.

I here by certify to having surveyed and platted the east one-half of Lot 15 Cottage Homes and described on this map as SCHLETTI ADDITION, and have placed iron monuments at the corners of the addition as shown on this map and the same is correct.

John B. Irvine, Surveyor.

State of Minnesota } On this 26th day of December, A.D. 1911 personally appeared County of Ramsey } before me the undersigned John B. Irvine to me well known and acknowledged that he executed the foregoing certificate as his own free act and deed.

Q. E. Holmberg, Notary Public, Ramsey County, Minnesota. My Commission Expires December 10th 1913.

This is to certify that Christian Schletti and Eliza A. Schletti, his wife are the owners of the east one-half of lot 15 Cottage Homes (except Wheelock Parkway) have caused the same to be surveyed and platted and hereafter known as SCHLETTI ADDITION as shown by this plat and here by dedicate to the public and for public use forever all the streets, avenues, alleys or parkways as here in indicated.

Witness our hands and seals this 28th day of January A.D. 1912

In presence of
 Charles E. Schletti } Christian Schletti
 John B. Irvine } Eliza A. Schletti

State of Minnesota } On this 29th day of January A.D. 1912 personally came County of Ramsey } before me the undersigned Christian Schletti, and Eliza A. Schletti, his wife to me well known and they acknowledged that they executed the foregoing certificate as their own free act and deed.

John B. Irvine, Notary Public, Ramsey County, Minnesota. My Commission Expires May 15-1914.

Accepted and Approved this thirtieth day of January A.D. 1912

Jesse Jordan } Plat Commission
 O. Clausen } City Engineer.

Accepted by the Board of Aldermen February 6 - A.D. 1912
 Accepted by the Assembly February 15 - A.D. 1912
 Approved February 17 - A.D. 1912

Geo. J. Redington City Clerk.

CITY TREASURER'S OFFICE, ST. PAUL, MINN. MAR 11 1912.

TAXES PAID By Sale of Land Described Within AND TRANSFER THEREOF MAR 11 1912 GEO. F. RIES, Co. Auditor, Ramsey County, Minn.

Taxes for the year 1911 on the lands described within PAID MAR 11 1912 JESSE FOOT, Treasurer, Ramsey County, Minn.

419261h