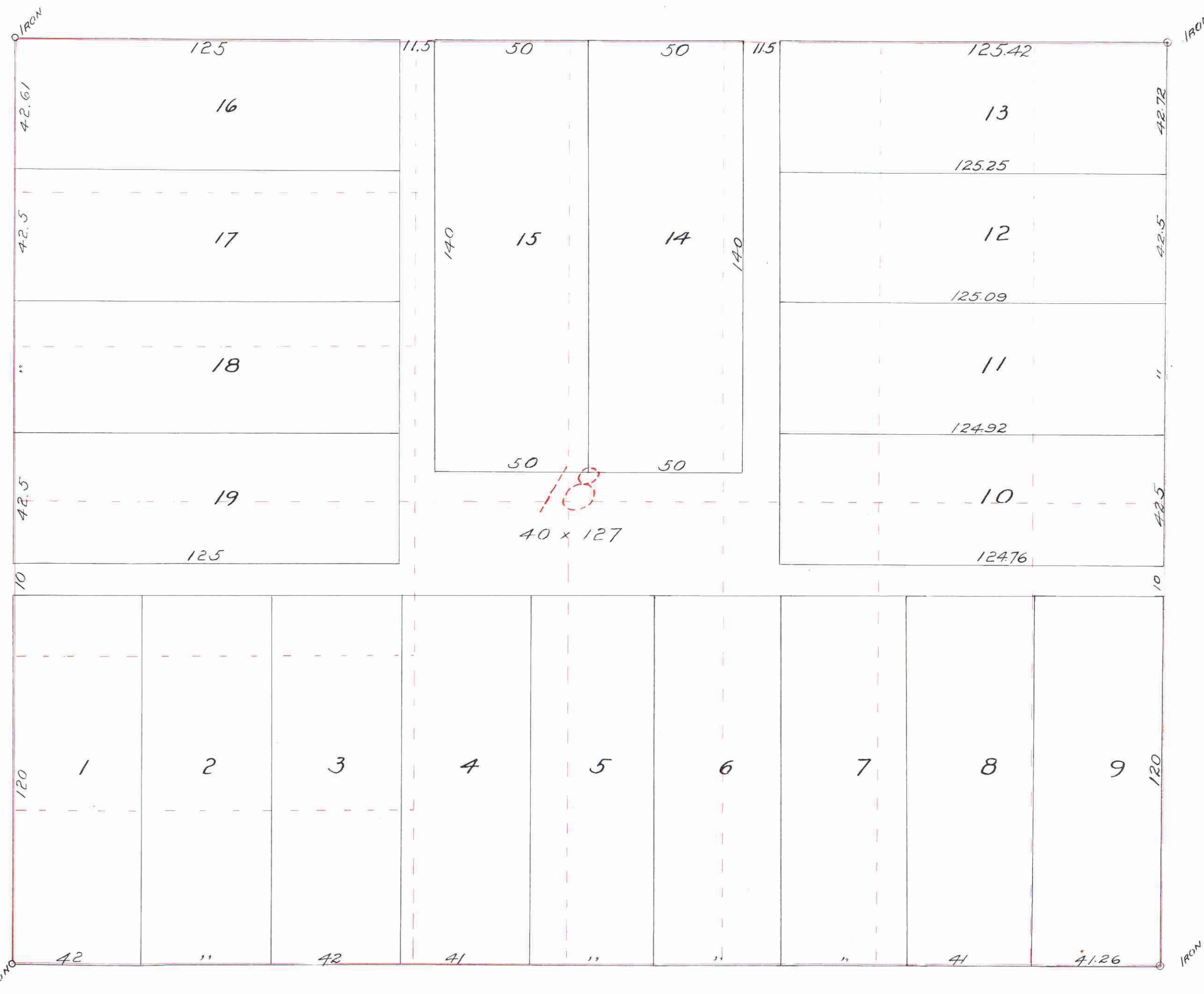


KNISPPEL'S SUBDIVISION

Scale 1" to 30'

John E. Fearing
Surveyor.

PAGE ST.



I hereby certify to having surveyed and platted the property as described on this map as KNISPPEL'S SUBDIVISION, and have placed iron monuments at the corners thereof, as shown on this map, and the same is correct.

John E. Fearing
Surveyor.

State of Minnesota } ss
County of Ramsey }

On this 20th day of July A.D. 1911 personally appeared before me, the undersigned, John E. Fearing, to me well known, and acknowledged that he executed the foregoing certificate as his free act and deed.

Kenneth Brill
Notary Public, Ramsey Co. Minn.
My commission expires Jan. 20th 1913.

This is to certify that Sylvester Kipp and *Belinda A. Kipp*, his wife, owners of Block 18 Dawson's Addition to St. Paul, have caused the same to be surveyed and platted, and hereafter known as KNISPPEL'S SUBDIVISION, as shown by this plat, and hereby dedicate to the public, for public use forever, all the streets, avenues and alleys as shown hereon.

Witness our hands and seals this 20th day of July 1911.

In presence of
Jos. L. Haines ... *Sylvester Kipp*
Ruth Kipp ... *Belinda A. Kipp*

State of California } ss
County of ~~San Diego~~ } ss

On this 26th day of July, A.D. 1911 personally appeared before me, the undersigned, Sylvester Kipp and *Belinda A. Kipp*, his wife, to me well known, and acknowledged that they executed the foregoing instrument as their free act and deed.

Jos. L. Haines
Notary Public, ~~San Diego~~ Co., California.
My commission expires Aug. 16th 1914.

Accepted and approved this 1st day of August A.D. 1911.

Wm. Jordan } Plat Commissioners
J. F. Farley }
Oscar Claussen City Engineer

Accepted by the Assembly August 17th 1911
" by the Board of Aldermen " 15th 1911
Approved " 17th 1911
J. Redington
City Clerk

This plat document is an UNOFFICIAL copy of a Subdivision Plat or Registered Land Survey and is made available for information purposes only.

To obtain an official copy please contact the Ramsey County Recorder's Office.

TAXES PAID
By Sale of Land Entered Within AND TRANSFER ENTERED
AUG 24 1911
GEO. J. BIES, Co. Auditor,
By *Ferguson* Deputy.

CITY TREASURER'S OFFICE,
ST. PAUL, MINN.
AUG 24 1911
Assessment Paid
S. A. BARNWORTH, City Treas.
By *McDonald*

410501 316

24 August
11 35 August
28
By *M. J. Sigwald*
17

Finger

htsaih

OHIO ST.

CHARLTON ST.

SYDNEY ST.