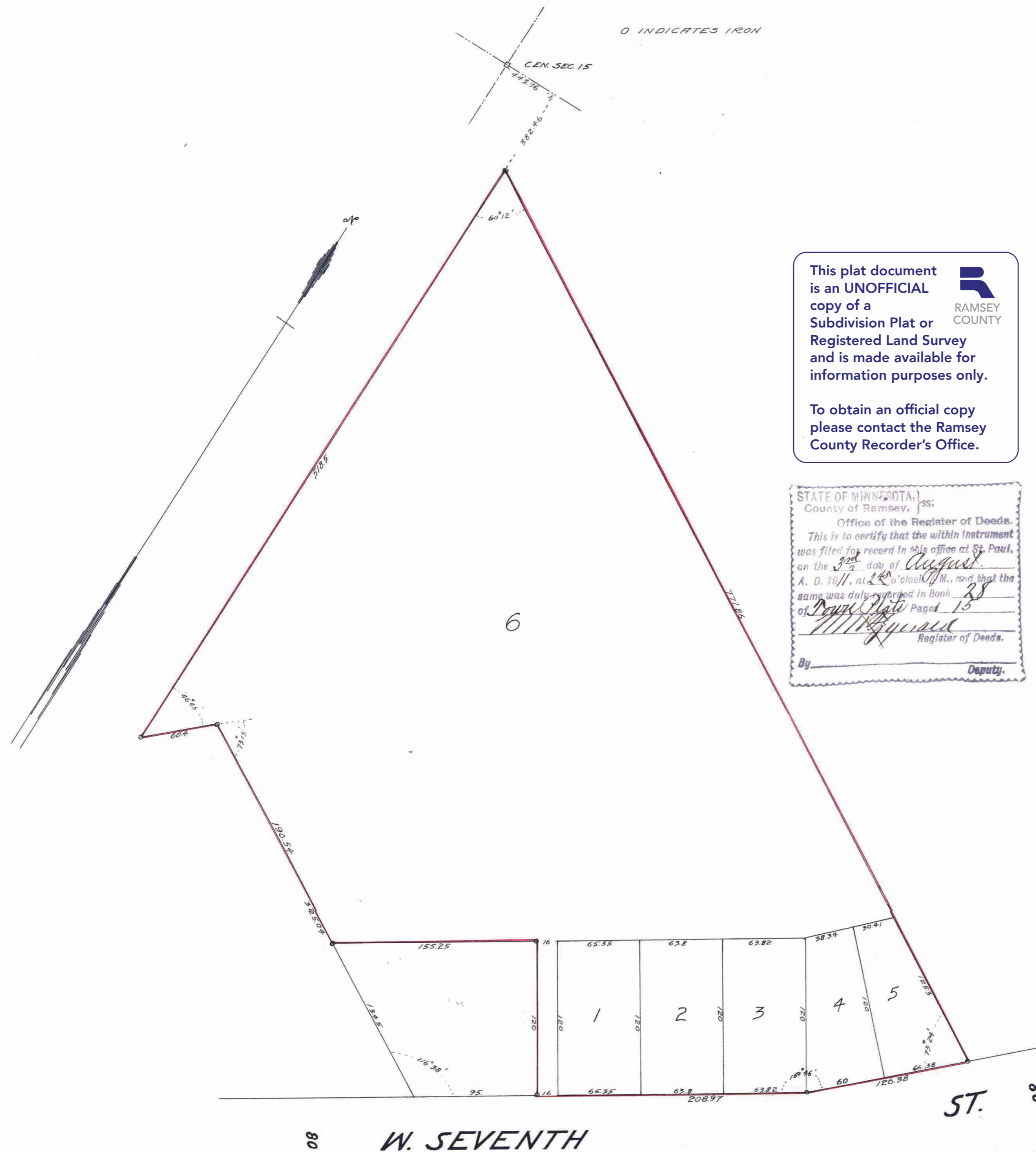


BOHLAND'S ADDITION

ST. PAUL MINN.

SCALE 60' = 1 INCH.



This plat document is an UNOFFICIAL copy of a Subdivision Plat or Registered Land Survey and is made available for information purposes only. To obtain an official copy please contact the Ramsey County Recorder's Office.

STATE OF MINNESOTA, County of Ramsey, ss: Office of the Registrar of Deeds. This is to certify that the within instrument was filed for record in this office at St. Paul, on the 29th day of August, A. D. 1911, at 2 o'clock P. M., and that the same was duly recorded in Book 38 of Page 13 of Bohland's Addition Registrar of Deeds.

I hereby certify to having surveyed and platted the property as described on this map as Bohland's Addition, and have placed iron monuments as shown on this map and the same is correct. Charles B. Batsow Surveyor. State of Minnesota } County of Ramsey } On this 7th day of July, A.D. 1911 personally appeared, Chas. Batsow, to me before me, Notary Public, to me well known and acknowledged that he executed the foregoing instrument as his own free act and deed. My Commission expires Sept. 3, 1911.

This is to certify that John A. Bohland and Louise C. his wife, proprietors of the following described tract of land, commencing at a point 443.96 ft. east and 382.76 ft. south of the center of Sec. 15, T. 28, R. 23, thence south along the east line of lands owned by P. Ryan and land owned by Christian 518.5 ft. to north line of land deeded by P. Ryan (Book 2, Deeds page 788) thence N 46° 45' E. 60.7 ft. thence S 60° E along the NE 1/4 line of said P. Ryan's land 325.04 ft. to the N 1/4 line of W 7th St. thence N 56° 38' E. along the N 1/4 line of W 7th St. 305.97 ft. to a point, thence continuing along N 1/4 line of said W 7th St. N 46° 24' E. 126.38 ft. to N 1/4 line of C.W. Youngman's Addition, thence N 60° 12' W along N 1/4 line of said C.W. Youngman's Addition, 771.86 ft. to point of beginning except that portion in SW corner thereof; described as follows, commencing at the intersection of the S.W. line of the above described tract with the N 1/4 line of said W 7th St. thence E 1/4 along the N 1/4 line of said W 7th St. 25 ft. thence N 1/4 at right angles with W 7th St. 120 ft. thence N 1/4 parallel with the N 1/4 line of said W 7th St. 155.25 ft. to N 1/4 line of the above described tract, thence S 1/4 along N 1/4 line of said described tract 134.5 ft. to place of beginning, have caused the same to be surveyed and platted and hereafter known as "BOHLAND'S ADDITION", and hereby dedicate to the public the alley shown hereon. Witness our hands and seals this 7th day of July, A.D. 1911.

In presence of Ray Jordan W. L. Mayo John A. Bohland Louise C. Bohland

State of Minnesota } County of Ramsey } On this 7th day of July, A.D. 1911 personally appeared before me John A. Bohland and his wife to me well known and acknowledged that they executed the foregoing instrument as their own free act and deed. W. L. Mayo Notary Public Ramsey Co. Minn. My commission expires June 22, 1914.

Accepted and approved this eight day of July, A.D. 1911. Ray Jordan W. L. Mayo Plat Commissioners O. Clausen City Engineer

Accepted by the Assembly July 20th 1911. Accepted by the Board of Aldermen July 18th 1911. And approved July 27th 1911. A. Redington City Clerk

CITY TREASURER'S OFFICE, ST. PAUL, MINN. AUG 2 1911 Assessment PAID By B. A. Farnsworth City Treasurer

TAXES PAID AND TRANSFER ENTERED AUG 2 1911 GEO. J. RIES, County Auditor. By Geo. J. Ries County Auditor

Taxes for the year 1910 on the lands described within PAID AUG 2 1911 Jesper County Treasurer

409613