

# ELDER'S REARRANGEMENT

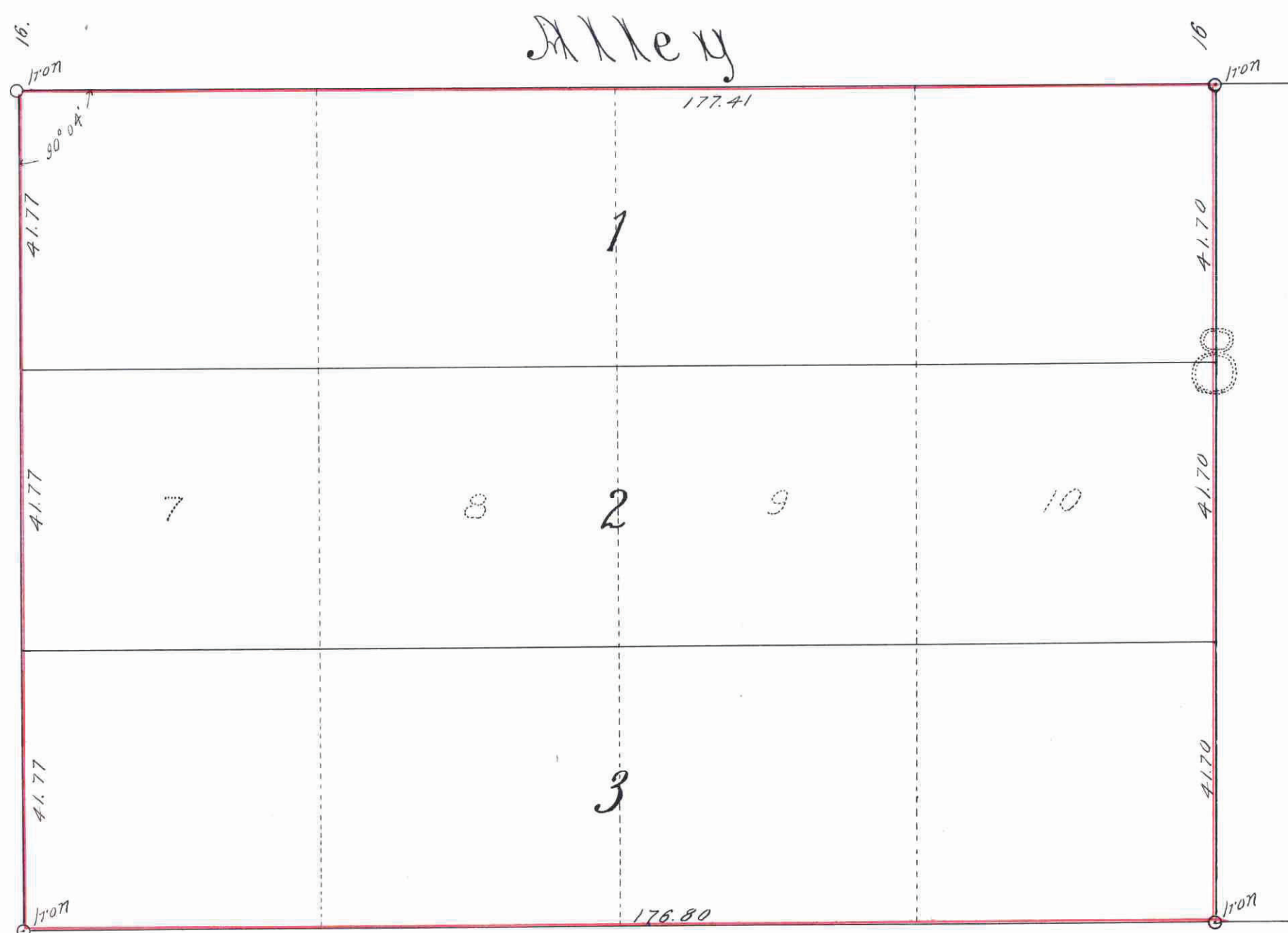
SURVEYED BY  
**FOWBLE & FITZ**  
 CIVIL ENGINEERS & SURVEYORS  
 ST. PAUL MINN.

Scale 20. Feet pr. inch.

60

Ave.

Clayland



I hereby certify to having surveyed and  
 platted the property as described on this map  
 as Elder's Rearrangement, and have placed  
 iron monuments at the corners as shown on this  
 map, and the same is correct.  
*Milton Fowble*  
 Surveyor.

State of Minnesota }  
 County of Ramsey } On this 24 day of  
April A.D. 1911, personally appeared  
 before the undersigned, T. Milton Fowble,  
 to me well known, and acknowledged that  
 he executed the foregoing certificate as his  
 own free act and deed.  
*D. Reilly*  
 Notary Public  
 Ramsey Co. Minn.  
 My Commission expires Feb. 26. 1914

This is to certify that John A. Lytle, bachelor, proprietor of Lots 7, 8, 9 and  
 10 Block 8, Midway Heights, has caused the same to be surveyed and platted and  
 hereafter known as, Elder's Rearrangement, as shown by this plat and hereby dedicate  
 to the public and for the public use forever, all the streets, avenues and alleys as herein  
 indicated.

Witness my hand and seal this 24 day of April A.D. 1911.  
 In presence of

*Charles Ramsey*

*John A. Lytle*

State of Minnesota }  
 County of Ramsey } On this 24 day of April A.D. 1911,  
 personally came before me, the undersigned, John A. Lytle,  
 bachelor, to me well known, and he acknowledged that  
 he executed the foregoing certificate as his own free  
 act and deed.

*D. Reilly*  
 Notary Public  
 Ramsey Co. Minn.  
 My Commission Expires Feb. 26. 1914

Accepted and approved this 8th day of May A.D. 1911.

*J. S. Farney* } Plat  
*O. Clauson* } Commissioners  
 City Engineer.

Accepted by the Assembly May 18 - 1911  
 Accepted by the board of Aldermen June 6 - 1911

Approved June 7 1911  
*Geo. J. Redington*  
 City Clerk

This plat document  
 is an UNOFFICIAL  
 copy of a  
 Subdivision Plat or  
 Registered Land Survey  
 and is made available for  
 information purposes only.  
 To obtain an official copy  
 please contact the Ramsey  
 County Recorder's Office.

TAXES PAID  
 AND TRANSFER ENTERED  
 JUN 16 1911  
 GEO. J. RIES, County Auditor.  
 By *Jung* Deputy.

CITY TREASURER'S OFFICE,  
 ST. PAUL, MINN.  
 JUN 16 1911  
 Assessment PAID  
 S. A. FARNSWORTH, City Treas.  
 By *Schneider*

STATE OF MINNESOTA }  
 County of Ramsey, }  
 Office of the Registrar of Deeds  
 This is to certify that the within instrument  
 was filed for record in the office at St. Paul,  
 on the 16 day of June  
 A. D. 1911, at 11 o'clock A.M. and that the  
 same was duly recorded in Book 28  
 of Page 28  
*M. J. Quinn*  
 Register of Deeds.  
 By \_\_\_\_\_ Deputy.

Taxes for the year 1910 on the  
 lands described within PAID  
 JUN 16 1911  
 ST. PAUL, MINN.  
 JESAE FOOT, County Treasurer.  
 By *Jung*

407438

407438