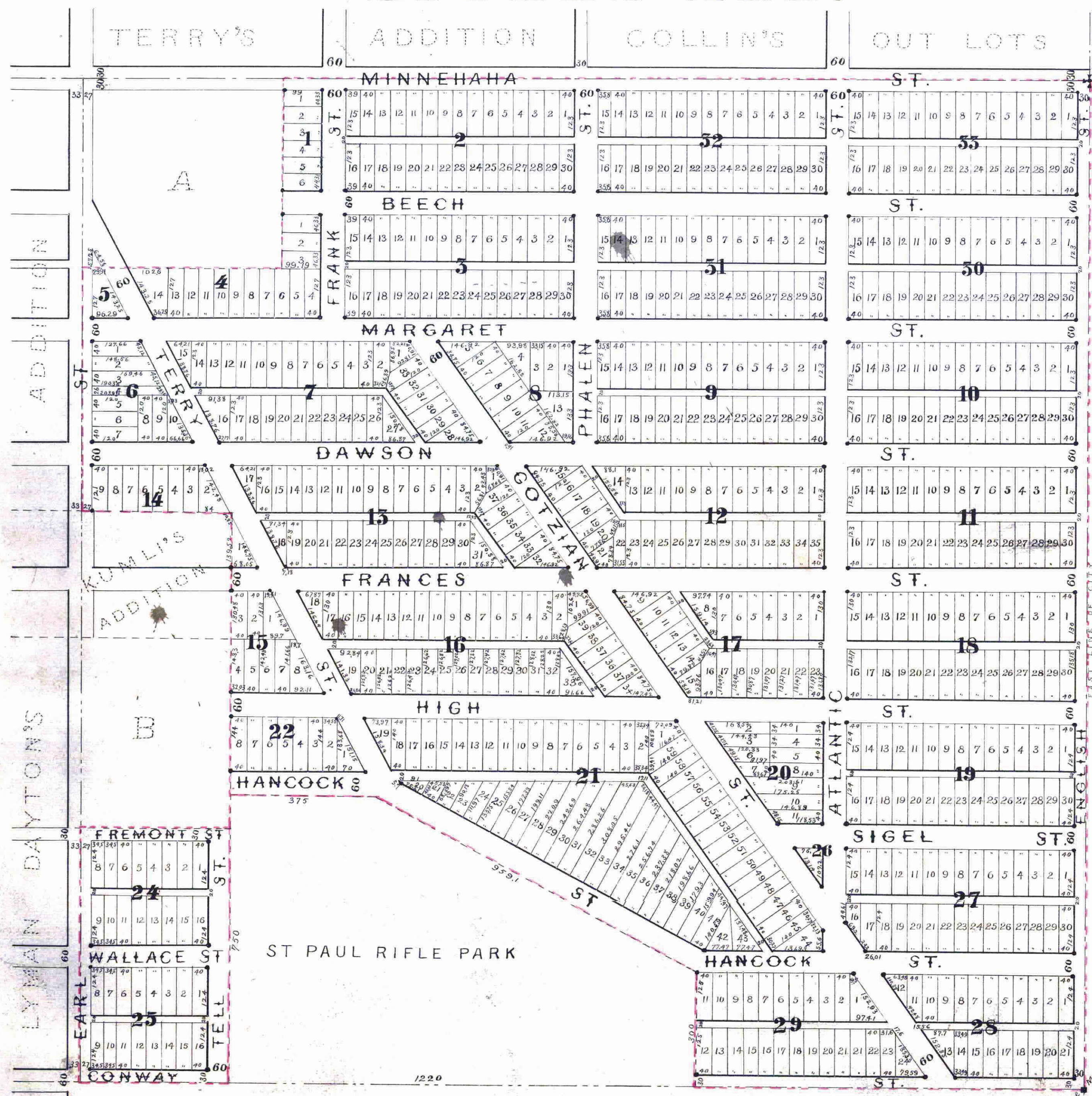


# A. GOTZIAN'S REARRANGEMENT of SIGEL'S ADD.

This plat document is an UNOFFICIAL copy of a Subdivision Plat or Registered Land Survey and is made available for information purposes only.

To obtain an official copy please contact the Ramsey County Recorder's Office.



SCALE 200 FEET = INCH

Iron Bolts at Block Corners.  
--- Boundary Lines of Addition.

We, the undersigned owners of "SIGEL'S ADDITION TO THE CITY OF ST. PAUL" as the same is recorded in the office of the Register of Deeds of Ramsey Co., Minnesota and embraces all of the northeast quarter of Section 33 Town 29 North, Range 22 West, excepting those parcels marked on this plat A. B. KUMLI'S ADDITION and St Paul Rifle Park, do hereby certify to having caused the same to be surveyed and platted as A. GOTZIAN'S Rearrangement of SIGEL'S ADDITION as herein and hereon indicated, and we do hereby give and dedicate to the public and for the public use forever all the streets and alleys as on this map or plat laid out and designated.

In witness whereof we have hereunto set our hands and seals this 24<sup>th</sup> day of May A.D. 1883.

In Presence of  
*C. Christopher*  
*M. Commick* }  
*Adam Gotzian*  
*Josephine Gotzian* } Seal

State of Minnesota } ss. Be it known, That on this 24<sup>th</sup> day of May A.D. 1883 before me personally came Adam Gotzian and Josephine Gotzian his wife, to me known to be the identical persons described in and who executed the foregoing instrument and who acknowledged that they executed the same freely and voluntarily for the uses and purposes therein expressed.

*M. Commick*  
Notary Public of Ramsey County Minn.

I hereby certify to having surveyed and platted the property as described on this map as A. GOTZIAN'S Rearrangement of SIGEL'S ADDITION and have placed iron monuments at the corners of each and every BLOCK (excepting at the northwest corners of Blocks 4, 7, 20, 11 and 24 at the NE & NW corners of Block 5 and the SW corner of Block 17, it being impracticable to set said corners) as shown on this map and the same is correct.

*D. L. Currier*  
Surveyor.

Approved May 21 1883 { *[Signature]* } PLAT COMMISSION.

I have examined the within plat and recommend its approval.

*W. A. Tomers*  
City Engineer.

Accepted by the Common Council June 11 1883.  
*[Signature]*  
 City Clerk.

Taxes paid & Transfer Collected  
 June 6<sup>th</sup> 1883  
*[Signature]*

STATE OF MINNESOTA, ss.  
 County of Ramsey.  
 OFFICE OF THE REGISTER OF DEEDS.  
 This is to certify that the within instrument was filed for Record in the office of St. Paul, on the 6<sup>th</sup> day of June A. D. 1883 at 12 o'clock - M., and that the same was duly recorded in Book 5 of Plats page 23

*[Signature]*  
 Register of Deeds.