

PFEIFER'S PLACE

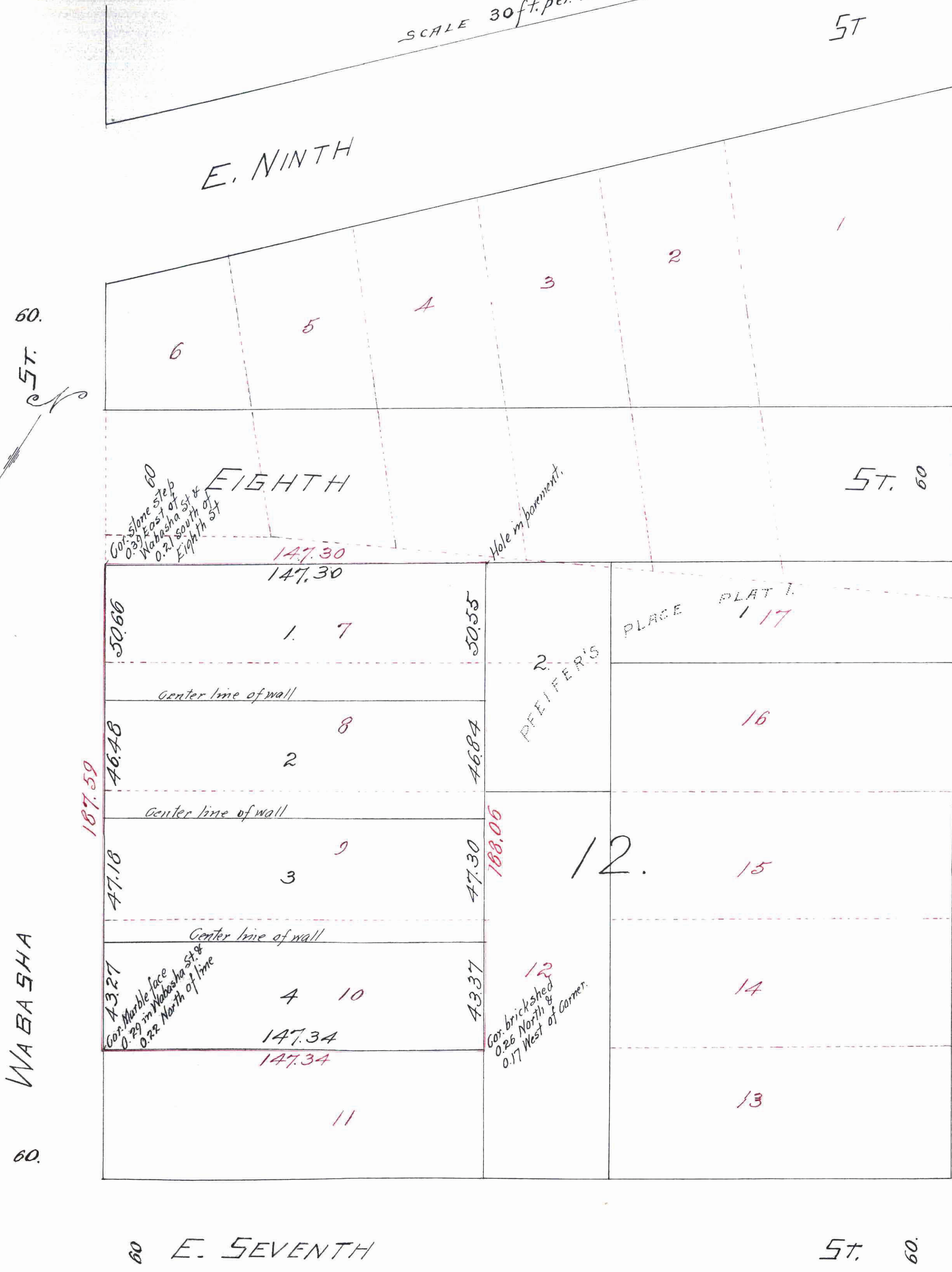
PLAT 2

ST. PAUL, MINN.

DEC. 1910.

JOHN B. IRVINE, SURVEYOR

SCALE 30 ft. per inch.



This plat document is an UNOFFICIAL copy of a Subdivision Plat or Registered Land Survey and is made available for information purposes only.

To obtain an official copy please contact the Ramsey County Recorder's Office.



I hereby certify to having surveyed and platted the property as described on this map as PFEIFER'S PLACE PLAT 2, and have designated at the corners thereof the location of the same as shown on this map and the same is correct.

John B. Irvine, Surveyor.

State of Minnesota } On this 14th day of December A. D. 1910.
 County of Ramsey } personally appeared before me the undersigned John B. Irvine to me well known and acknowledged that he executed the foregoing certificate as his own free act and deed.

Notary Public
 Ramsey County, Minnesota.

This is to certify that Katharine Pfeifer, widow of Peter Pfeifer is the owner of Lot 7 lying southerly of Eighth St. also of Lots 8, 9, & 10 all being in Block 12 Bazille & Guerin's Addition to St. Paul, Minn., has caused the same to be surveyed and platted and hereafter known as PFEIFER'S PLACE PLAT 2 as shown by this plat and hereby dedicate to the public for public use forever all the streets as herein indicated.

Witness her hand and seal this 14th day of December A. D. 1910.

State of Minnesota } On this 14th day of December A. D. 1910.
 County of Ramsey } personally came before me the undersigned Katharine Pfeifer, widow of Peter Pfeifer to me well known and acknowledged that she executed the foregoing certificate as her own free act and deed.

John B. Irvine, Notary Public, Ramsey County, Minnesota.

Accepted and Approved this fifteenth day of December A. D. 1910.

City Engineer

Accepted by the Board of Aldermen Dec 20 - A. D. 1910.
 Accepted by the Assembly Dec 15 - A. D. 1910.
 Approved Dec 23 - A. D. 1910.

City Clerk

CITY TREASURER'S OFFICE, ST. PAUL, MINN. DEC 29 1910

TAXES PAID AND TRANSFER ENTERED DEC 29 1910 EDW. A. KRANER, Co. Auditor, Deputy.

Taxes for the year 1910 on the land hereon paid. DEC 30 1910 JESSE J. JAMES, County Treasurer, Deputy.

MINNESOTA County of Ramsey Office of the Board of Assessors This is to certify that the taxes on the above described property for the year 1910 have been paid. 29th December 1910 J. J. James, Assessor

150051