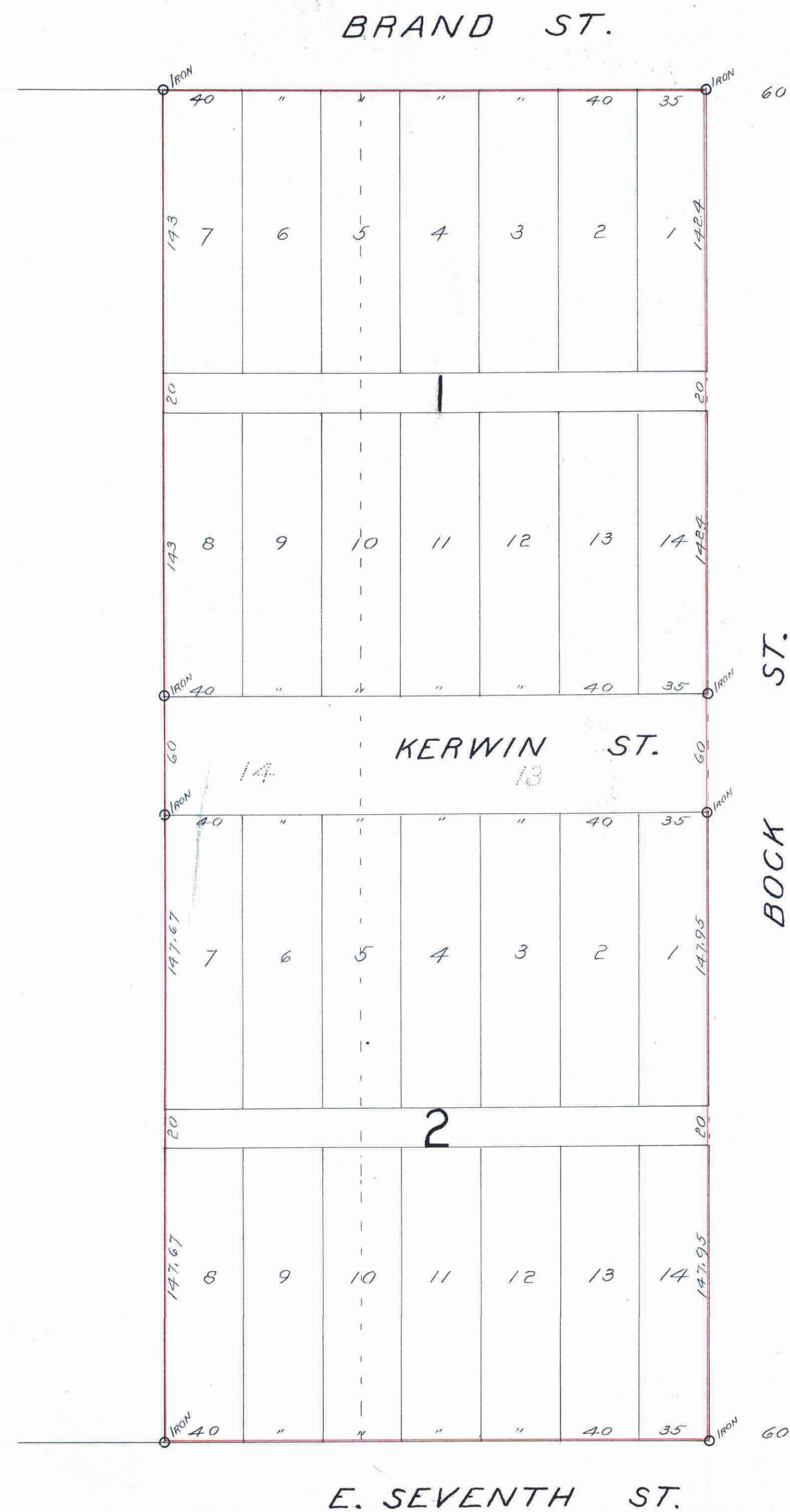


SCHOCH'S RE-ARRANGEMENT

Scale 1" to 50'

R. Holterhoff
Surveyor



I hereby certify to having surveyed and platted the property as described on this map as SCHOCH'S RE-ARRANGEMENT, and have placed iron monuments at the corners of each block, as shown on this map, and the same is correct.

R. Holterhoff
Surveyor.

State of Minnesota } ss.
County of Ramsey }

On this 7th day of November A.D. 1910 personally appeared before me, the undersigned, R. Holterhoff, to me well known, and acknowledged that he executed the foregoing certificate as his free act and deed.

Edwin R. Holcombe
Notary Public, Ramsey Co. Minn.
My commission expires May 12th 1916

This is to certify that Andrew Schoch and Rosalia Schoch, his wife, proprietors of Lots 13 and 14 Block 2 Cruickshanks' Garden Lots, have caused the same to be surveyed and platted, and hereafter known as SCHOCH'S RE-ARRANGEMENT, as shown on this map, and hereby dedicate to the public, for public use forever, all the streets, avenues and alleys as hereon indicated.

Witness our hands and seals this 7th day of November A.D. 1910.

In presence of

S. W. Schoch

E. R. Holcombe

Andrew Schoch
Rosalia Schoch

State of Minnesota } ss.
County of Ramsey }

On this 7th day of November A.D. 1910 personally came before me, the undersigned, Andrew Schoch and Rosalia Schoch, his wife, to me well known, and acknowledged that they executed the foregoing instrument as their free act and deed.

Edwin R. Holcombe
Notary Public, Ramsey Co. Minn.
My commission expires May 12th 1916

Accepted and approved this 22nd day of November A.D. 1910.

J. J. Jordan } Plat Commissioners
J. J. Farley }
L. W. ... } City Engineer.

Accepted by the Assembly Dec 1st 1910; Accepted by the Board of Aldermen Dec 6 1910; Approved Dec 10 1910.

Geo. T. Redington
City Clerk.

This plat document is an UNOFFICIAL copy of a Subdivision Plat or Registered Land Survey and is made available for information purposes only.

To obtain an official copy please contact the Ramsey County Recorder's Office.

TAXES PAID
AND TRANSFER ENTERED
DEC 16 1910
EDW. A. KRAMER, Co. Auditor,
By [Signature] Deputy.

CITY TREASURER'S OFFICE,
ST. PAUL, MINN.
DEC 16 1910
Assessment 1910
S. G. GARRISON, City Treas.
By [Signature]

Stamp for the year 1910 on the back of this plat.
DEC 15 1910
ST. PAUL, MINN.
JESSE W. ...
By [Signature]

379500

18