

# C.W. YOUNGMANS 4<sup>TH</sup> ADDITION

Scale 1" to 50'  
• Indicates Iron

Jens Pedersen  
Surveyor

888888

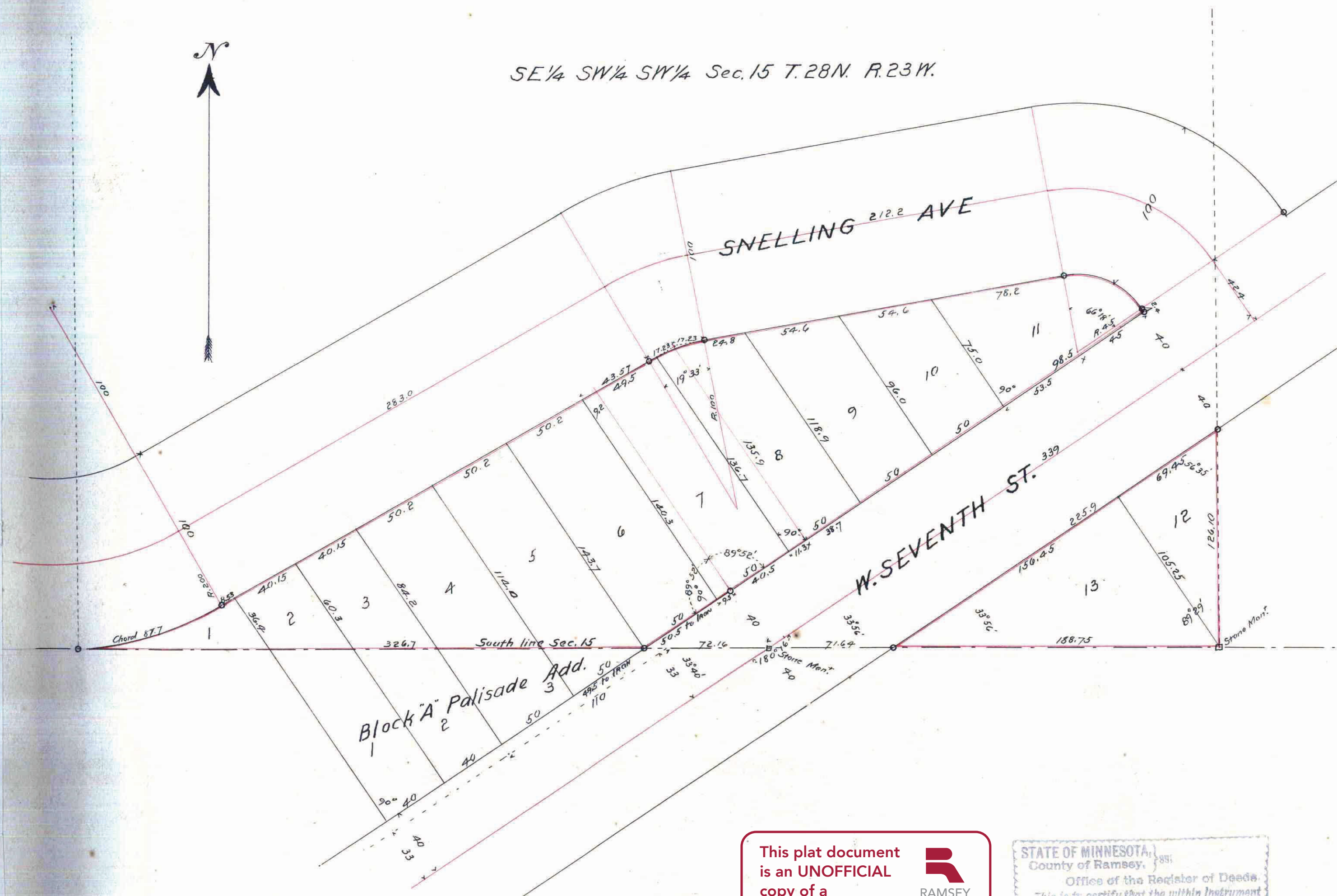
I hereby certify to having surveyed and platted the property as described on this map as C.W. YOUNGMAN'S 4<sup>TH</sup> ADDITION and have placed iron monuments at the corners as shown hereon and the same is correct.  
*Jens Pedersen*  
Surveyor

State of Minnesota }  
County of Ramsey } ss

On this 12<sup>th</sup> day of July A.D. 1910 before me personally appeared Jens Pedersen, to me well known, and acknowledged that he executed the foregoing certificate as his own free act and deed.

*A.P. Moore*  
Notary Public, Ramsey County, Minn.  
My commission expires Oct. 28, 1912.

SE 1/4 SW 1/4 SW 1/4 Sec. 15 T. 28 N. R. 23 W.



This is to certify that Charles B. Dunn, proprietor of the SE 1/4 of the SW 1/4 of the SW 1/4 of Section 15 T. 28 N. R. 23 W., has caused that part of it lying South of Snelling Avenue, as opened by order of the Common Council of the City of St. Paul, Minn. approved April 23<sup>rd</sup> 1909, (except W. Seventh St.) to be surveyed and platted and hereafter known as C.W. YOUNGMAN'S 4<sup>TH</sup> ADDITION, as shown on this map, and that the same contains no streets or alleys.

Witness my hand and seal this 12<sup>th</sup> day of July A.D. 1910

In presence of  
*William G. Robinson*  
*Robert O. Quinn*  
Charles B. Dunn

State of Mass. }  
County of Essex } ss

On this 12<sup>th</sup> day of July A.D. 1910 before me personally appeared Charles B. Dunn, to me well known, and acknowledged that he executed the foregoing instrument as his own free act and deed.

*William G. Robinson*  
Notary Public, Essex Co., Mass.  
My commission expires May 15, 1914

Accepted and approved this 16<sup>th</sup> day of August 1910  
*J. Amos*  
*Jas. W. Jordan*  
*John Farley*  
*Carl Randall*  
Plat Commissioners  
City Engineer

Accepted by the Assembly Aug 18 1910  
Accepted by the Board of Aldermen Aug 16 1910  
Approved Aug 24 1910  
*Ed. V. Redington*  
City Clerk

This plat document is an UNOFFICIAL copy of a Subdivision Plat or Registered Land Survey and is made available for information purposes only.  
To obtain an official copy please contact the Ramsey County Recorder's Office.



STATE OF MINNESOTA }  
County of Ramsey }  
Office of the Registrar of Deeds  
This is to certify that the within instrument was filed for record in this office at St. Paul, on the 27<sup>th</sup> day of August, A. D. 1910, at 11:50 o'clock A.M., and that the same was duly recorded in Book 27 of Page 13  
*M. J. Quinn*  
Registrar of Deeds  
By \_\_\_\_\_ Deputy.

Taxes for the year 1910 on the lands described within plat.  
JUL 19 1910  
EDW. G. KRUMER, Co. Auditor,  
By *Acoultan* Deputy.

TAXES PAID  
AND TRANSFER ENTERED  
JUL 19 1910  
EDW. G. KRUMER, Co. Auditor,  
By *Acoultan* Deputy.

CITY TREASURER'S OFFICE,  
ST. PAUL, MINN.  
JUL 19 1910  
Assessment PAID  
By *Acoultan* Deputy.

393860