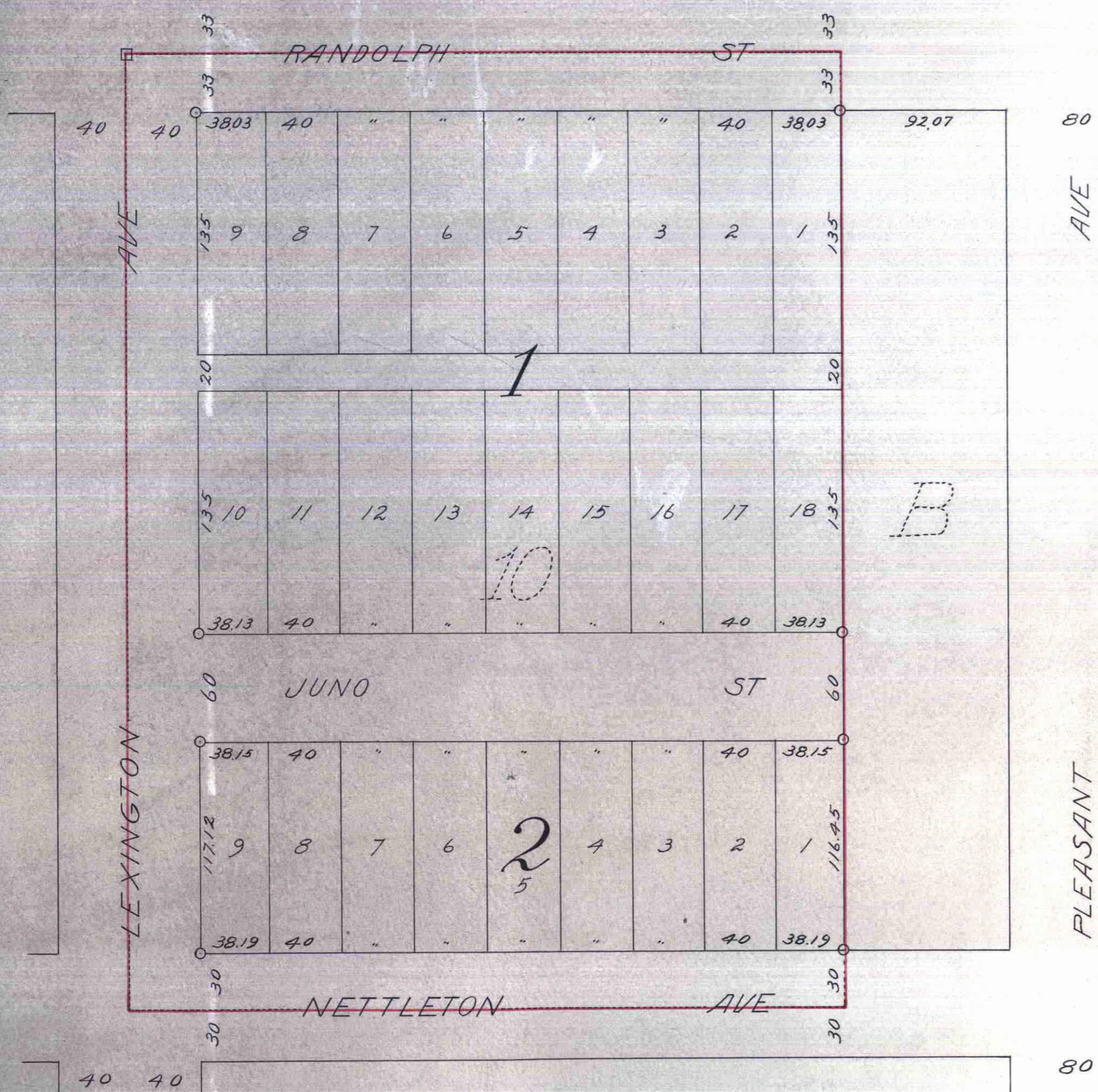


# HOWARD GREENE SECOND ADDITION

Surveyed by Fowble & Fitz

Circle indicates Iron  
Square " Stone  
Scale 60' to 1"



390707

I hereby certify to having surveyed and platted the property as described on this map as HOWARD GREENE SECOND ADDITION and have placed iron monuments as shown on this map, and the same is correct.

*W. Milton Fowble*  
Surveyor

State of Minnesota }  
County of Ramsey } ss

On this 25th day of April, A.D. 1910 before me personally appeared T. Milton Fowble, to me known to be the person described in the foregoing certificate, and acknowledged that he executed the same as his free, act and deed.

*John H. Downes*  
Notary Public, Ramsey Co. Minn.  
My commission expires July 12, A.D. 1912

This is to certify that Randolph Company, a corporation organized and existing under and by virtue of the laws of the state of Wisconsin, proprietor of Block 1 Lexington Park Plat 10, has caused the same to be surveyed and platted and hereafter known as HOWARD GREENE SECOND ADDITION as shown on this plat, and hereby dedicates to the public for public use forever all the streets, avenues and alleys as herein indicated.

Witness our hands and the corporate seal of the above named corporation this 10th day of April A.D. 1910.

In presence of  
*W. J. Tiefenbrink*  
*H. C. Haalanger*

Randolph Company  
By *Howard Greene*  
President  
By *A. F. Kleinstieber*  
Secretary

State of Wisconsin }  
County of Milwaukee } ss

On this 26th day of April A.D. 1910 before me personally appeared Howard Greene and A. F. Kleinstieber, to me well known, who, being duly sworn, did say, each for himself, that Howard Greene is the president and A. F. Kleinstieber is the secretary of Randolph Company, a corporation, and that the seal affixed to the foregoing instrument is the corporate seal of said company, and that said instrument was signed and sealed in behalf of said company by authority of its board of directors, and the said Howard Greene and A. F. Kleinstieber acknowledged said instrument to be the free act and deed of said corporation.

*William J. Tiefenbrink*  
Notary Public, Milwaukee Co. Wis.  
My commission expires Dec. 8, A.D. 1912

Accepted and approved this 14th day of May A.D. 1910.

*James Jordan* } Plat Commissioners  
*Wm. J. Redington* } City Engineer

Accepted by the Assembly

Accepted by Board of Aldermen  
and approved

May 5, 1910  
May 5, 1910  
May 12, 1910  
*Wm. J. Redington*  
City Clerk of the City of St. Paul

STATE OF MINNESOTA }  
County of Ramsey } ss  
Office of the Registrar of Deeds  
This is to certify that the within instrument was filed for record in the office of St. Paul, on the 21st day of June A. D. 1910 at 11:50 a.m. and that the same was duly recorded in book 27 of Page 1  
*Wm. J. Redington*  
Registrar of Deeds

TAXES PAID  
AND TRANSFER ENTERED  
JUN 20 1910  
EDW. B. KRAMER, Co. Auditor  
*H. C. Haalanger*

This plat document is an UNOFFICIAL copy of a Subdivision Plat or Registered Land Survey and is made available for information purposes only.  
To obtain an official copy please contact the Ramsey County Recorder's Office.

CITY TREASURER'S OFFICE,  
ST. PAUL, MINN.  
JUN 20 1910  
Assessment PAID  
S. A. BARNWORTH, City Treas.  
By *Wm. J. Redington*

Taxes for the year 1909 on the lands hereof  
JUN 20 1910  
ST. PAUL, MINN.  
JESSE L. LINDLEY, City Treasurer  
By *F. M. J. Frazier*

390707