

WALTON'S RE-AR.

Scale 1" to 40'

Jens Pedersen
Surveyor.

I hereby certify to having surveyed and plotted the property as described on this plat as WALTON'S Rearrangement, and have placed iron monuments at the corners of same, as shown on this map, and the same is correct.

Jens Pedersen
Surveyor.

State of Minnesota } ss.
County of Ramsey }

On this 13 day of August, 1909, personally came before me, the undersigned, Jens Pedersen, to me well known, and acknowledged that he executed the foregoing certificate as his own free act and deed.

A.P. Moore
Notary Public, Ramsey County, Minn.
My commission expires Oct. 28, 1912.

This is to certify that Ira M. Gobe and Annie E. W. Gobe, his wife, and Walter Honey and Eliza A. Honey, his wife, the owners of the following described property, viz.: Lots 13 to 20, inclusive, of Block 9, Clarke's Addition, have caused the same to be surveyed and platted, and hereafter known as WALTON'S RE-AR., as shown on this map, and hereby dedicate to the public, and for the public use forever, all the streets and alleys as herein indicated.

Witness our hands and seals this 27th day of July, 1909.
Samuel Jenkins
Walter Honey
Eliza A. Honey } Witnesses

Ira M. Gobe
Annie E. W. Gobe
Walter Honey
Eliza A. Honey

State of Minnesota } ss.
County of Hennepin }

On this 12th day of July, 1909, personally came before me, the undersigned, Walter Honey and Eliza A. Honey, his wife, to me well known, and acknowledged that they executed the foregoing certificate as their own free act and deed.

Walter Honey
Eliza A. Honey
Notary Public, Hennepin County, Minn.
My commission expires July 9, 1916.

State of Illinois } ss.
County of Cook }

On this 27th day of July, 1909, personally came before me, the undersigned, Ira M. Gobe and Annie E. W. Gobe, his wife, to me well known, and acknowledged that they executed the foregoing certificate as their own free act and deed.

Ira M. Gobe
Annie E. W. Gobe
Notary Public, Cook County, Ill.
My commission expires Feb. 27, 1913.

Accepted and approved this 31st day of Aug. 1909
James Jordan } Plat Commissioners
L.W. Lundell } City Engineer

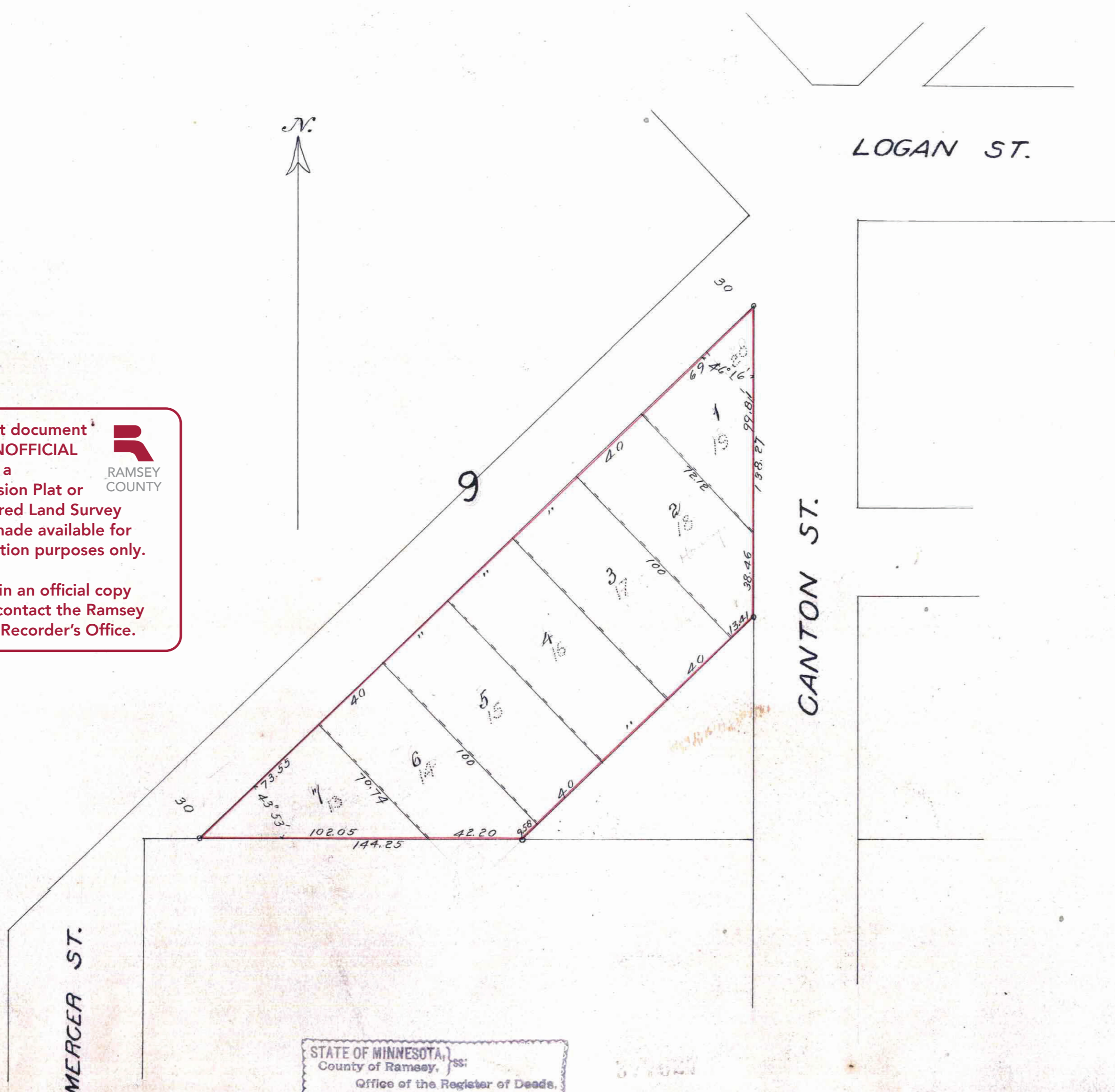
Accept by the Assembly Aug 1, 1909
Accepted by the Board of Aldermen Aug 17, 1909
Approved Aug 23, 1909

Geo. J. Richardson
City Clerk

This plat document is an UNOFFICIAL copy of a Subdivision Plat or Registered Land Survey and is made available for information purposes only.
To obtain an official copy please contact the Ramsey County Recorder's Office.



377627
L29443



STATE OF MINNESOTA, ss.
County of Ramsey, ss.
Office of the Register of Deeds.
This is to certify that the within instrument was filed for record in the office at St. Paul, on the 13 day of August, A. D. 1909, at 2:20 o'clock P. M., and that the same was duly recorded in Book 413 of Town Plat, Page 16.
M. J. Gervais
Register of Deeds

TAXES PAID AND TRANSFER ENTERED
SEP 2 - 1909
EDW. G. KRANMER, Co. Auditor,
By *Shawlow* Deputy

SEP 1 1909
JESSE B. WOOD, County Treasurer,
Per *J. J. Janger*

CITY TREASURER'S OFFICE,
ST. PAUL, MINN.
SEP 13 1909
A. W. WHELAN, City Treasurer,
Per *W. J. Janger*