

YADNAIS LAKE VILLAS

ALL OF SEC 31 T 30 R 22
EXCEPT
FRACTIONAL $\frac{1}{2}$ OF SW $\frac{1}{4}$
OF SAID SEC
SCALE 2000 ft. = 1 in



A	1.32 ac	276.5
B	2.34 ac	376
C	3.04 ac	400
D	3.87 ac	495
E	3.75 ac	500
F	4.11 ac	520
G	4.18 ac	520
H	5.02 ac	442



SECOND COPY 3/20/00 T.L.C.

VADNAIS LAKE VILLAS

Scale 1" = 200'

Recorded Nov 22 1881 Surveyor
Book P page 21. D.L. Curtice

Description:-
All of Sec. 31 T. 30 N. R. 22 W. except the fractional west half of the SW 1/4 of said section.

Note. See original record for survey lines.

N.W. Cor. Sec. 31.

A	1.32 ac.	276.5
B	2.34 ac.	345
C	3.04 ac.	400
D	3.37 ac.	435
E	3.75 ac.	500
F	4.11 ac.	530
G	4.18 ac.	550
H	3.62 ac.	442

N. Line of Sec. 30
1.38 ac.
30

ROAD 600 ac.

VADNAIS

LAKE

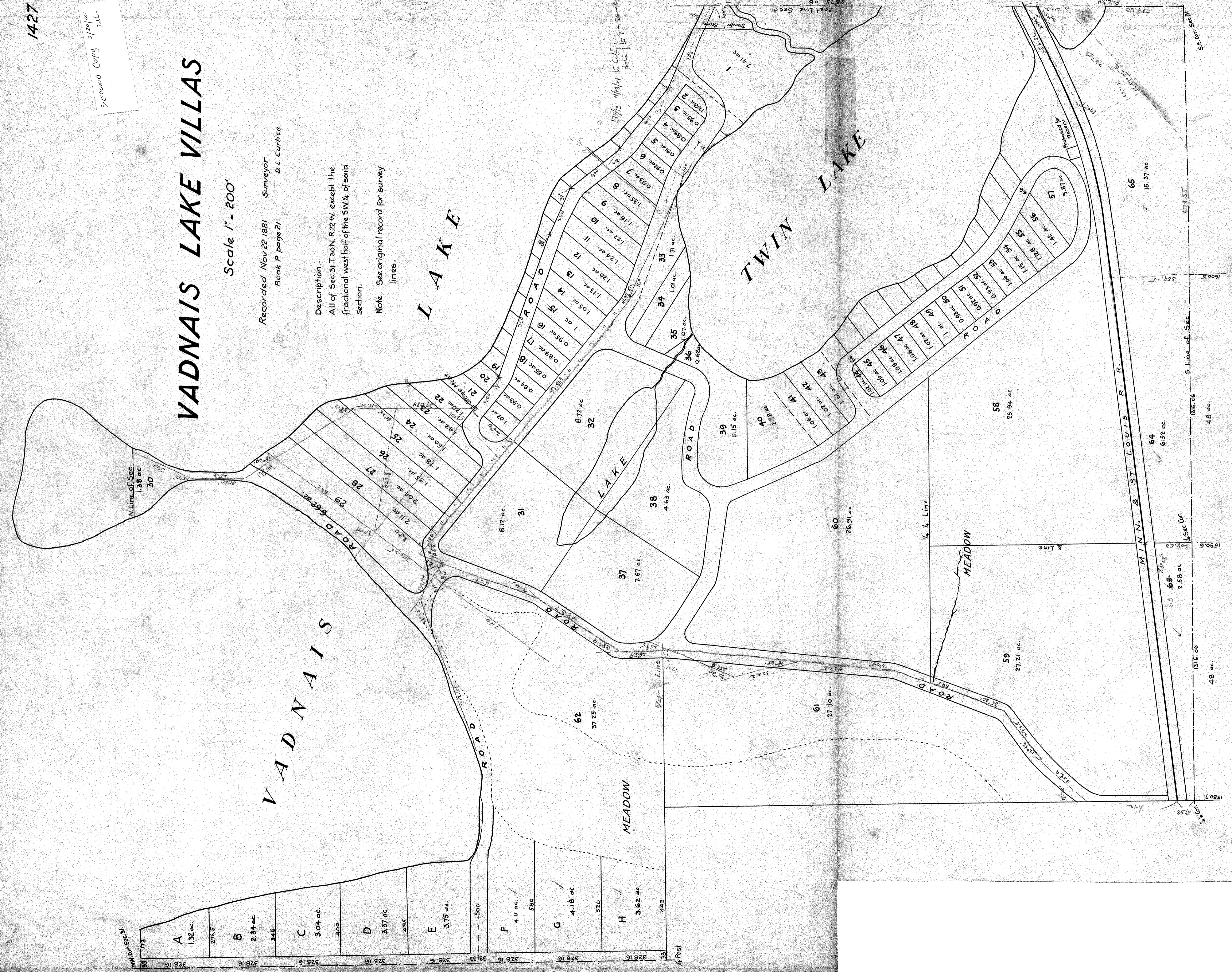
LAKE

TWIN LAKE

MEADOW

MEADOW

1/4 Post



65
15.37 ac.

64
6.50 ac.

63
2.58 ac.

48 ac.

1580.7

1590.6

1600.1

1600.1

MINN. & ST. LOUIS R.R.

East Line Sec 31
2275.08

1791.5 1/4 Sec. 31

1791.5 1/4 Sec. 31

1791.5 1/4 Sec. 31

1791.5 1/4 Sec. 31

1791.5 1/4 Sec. 31

1791.5 1/4 Sec. 31

1791.5 1/4 Sec. 31

1791.5 1/4 Sec. 31

1791.5 1/4 Sec. 31

1791.5 1/4 Sec. 31

1791.5 1/4 Sec. 31

1791.5 1/4 Sec. 31

1791.5 1/4 Sec. 31

1791.5 1/4 Sec. 31

1791.5 1/4 Sec. 31

1791.5 1/4 Sec. 31

1791.5 1/4 Sec. 31

1791.5 1/4 Sec. 31