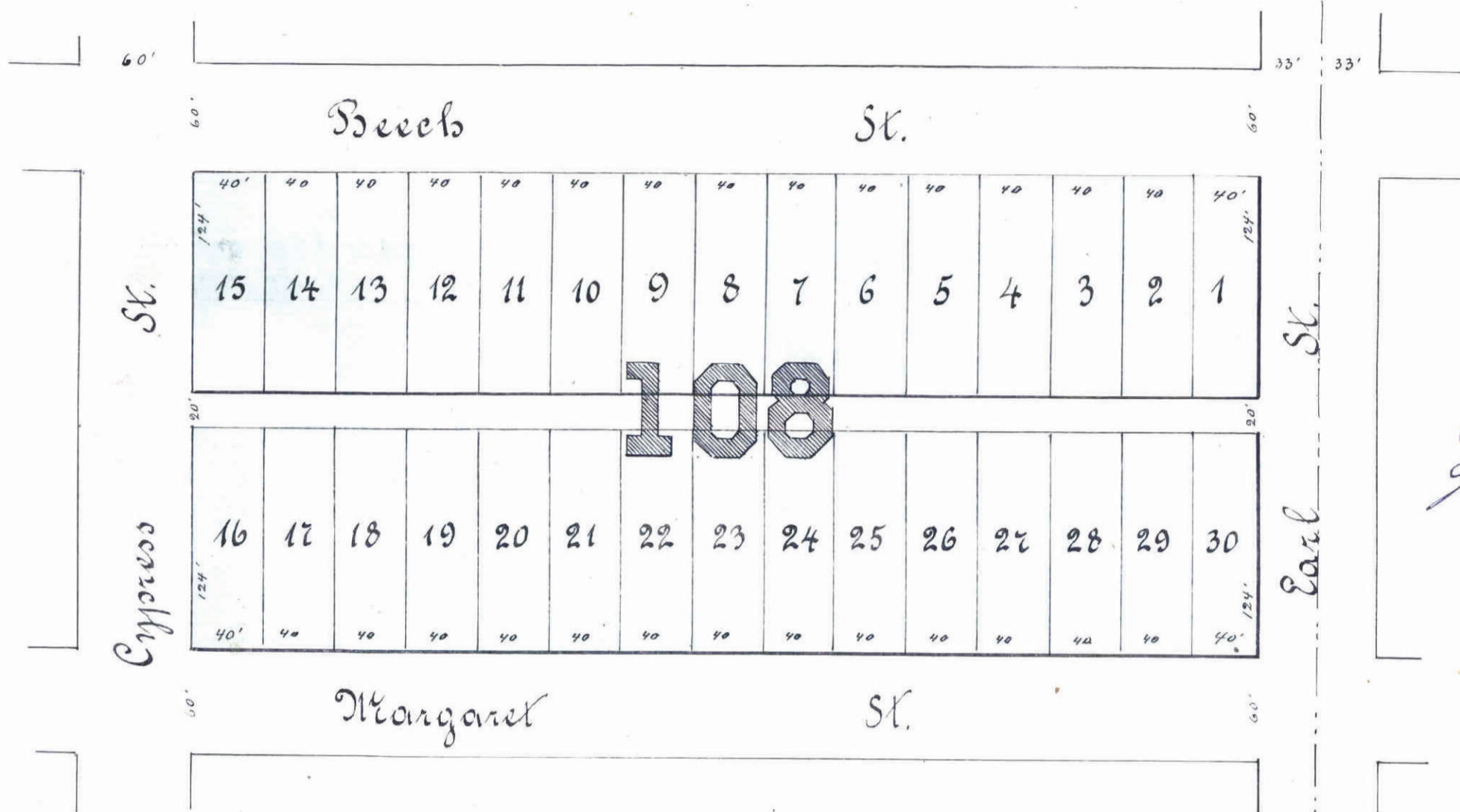


# CARLES FRIEND'S SUBDIVISION

of Block 108 of LYMAN DAYTON'S Addition

to ST. PAUL.

34.



St. Paul ~~October~~ Dec 4<sup>th</sup> 1882.

approved:

*D. P. Tolson*  
*James Starkey.*  
*Wm A. Mansblyka*

State Commission

Examined & Approved

*L. W. Rumditt*

Dec 5<sup>th</sup> 1882

City Engr.

Accepted by Common Council Dec. 5. 1882

*W. P. Punderson*  
City Clerk

City Treasurers' Office  
ST. PAUL, MINN.  
DEC 19 1882

*Geo. Reis*  
Just City

*Walter P. O'Neil*  
*J. M. Cardy*  
County Auditor

I hereby certify that this is a correct Plat of Charles Friend's Subdivision of Block 108 of Lyman Dayton's Addition to St. Paul as surveyed and platted by me in the Month of October 1882

St. Paul

October 21<sup>st</sup> 1882

*E. S. Hoeneck*  
Surveyor.

We the undersigned *Charles Friend* and *Josephine Friend* his wife proprietors of ~~Block 108~~ Block 108 of Lyman Dayton's Addition to St. Paul do hereby certify that we have caused the same to be surveyed and platted as represented by this plat and we hereby give the Alley for public use.

St. Paul this 21<sup>st</sup> Day of October 1882

*Charles Friend*  
*Josephine Friend*

State of Minnesota S. S.  
County of Ramsey

Before me - *George Reis* - a notary public in and for Ramsey County State of Minnesota this 21<sup>st</sup> Day of October 1882 in person appeared Carl Friend and Josephine Friend his wife to me personally known to be the parties described in and who signed the above certificate and they each acknowledged that they executed the same freely and voluntarily for the uses and purposes therein expressed.

St. Paul

October 21<sup>st</sup> 1882

*George Reis*

Notary public.

STATE OF MINNESOTA, } ss.  
County of Ramsey.  
OFFICE OF THE REGISTER OF DEEDS.  
This is to certify that the within instrument was filed for Record in this office, at St. Paul, on the 12<sup>th</sup> Day of December, D. 1882 at 11:30 clock A.M., and that the same was duly recorded in Book 2 of Plats page 34.  
*W. H. Johnson*  
Register of Deeds.  
By \_\_\_\_\_ Deputy.

This plat document is an UNOFFICIAL copy of a Subdivision Plat or Registered Land Survey and is made available for information purposes only.



To obtain an official copy please contact the Ramsey County Recorder's Office.