

# FOUNDRY ADDITION

TO THE  
CITY OF ST. PAUL

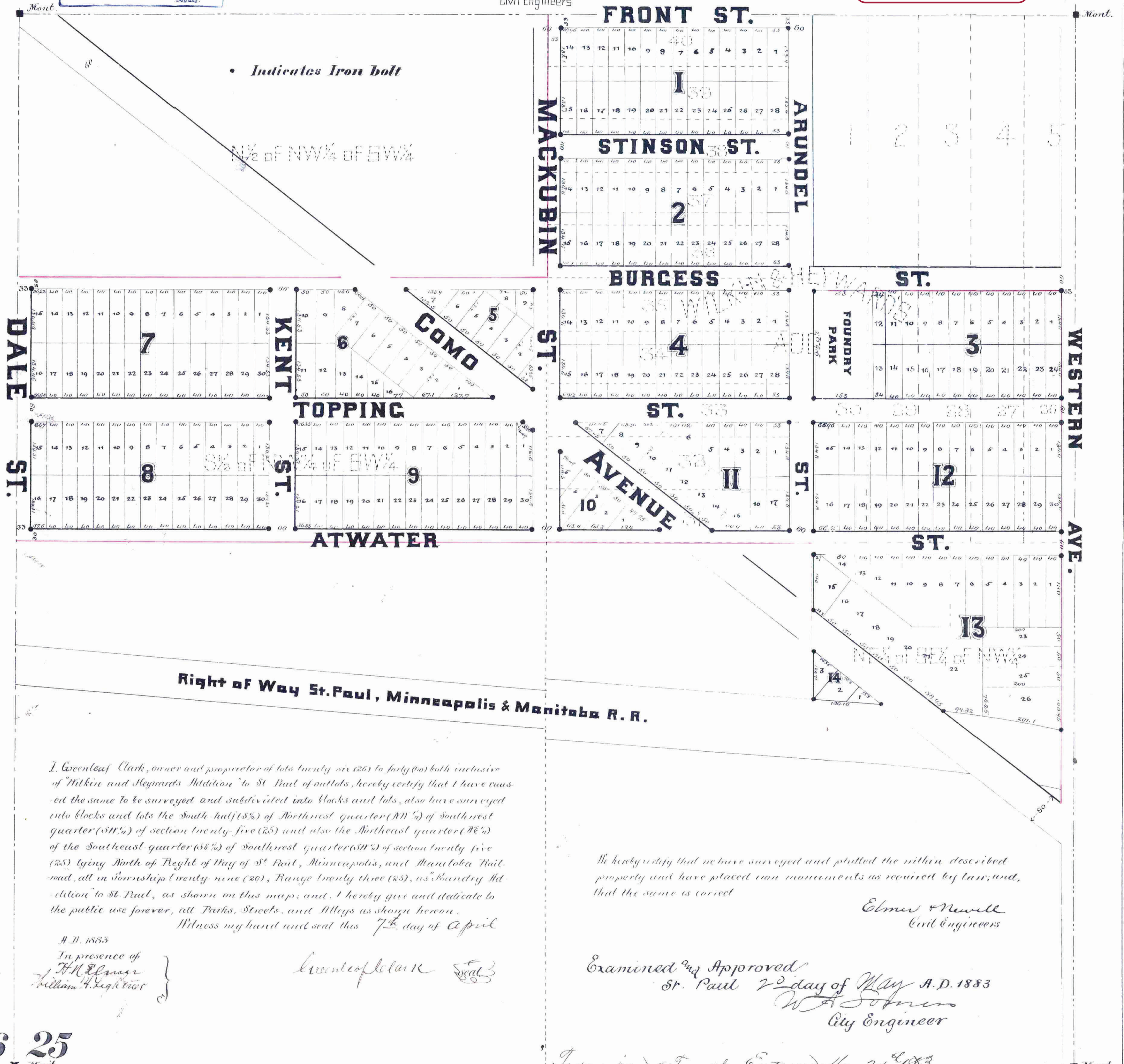
Scale: 1 in. = 150 Ft.

Surveyed & Drawn by  
**ELMER & NEWELL**  
Civil Engineers

This plat document is an UNOFFICIAL copy of a Subdivision Plat or Registered Land Survey and is made available for information purposes only.

To obtain an official copy please contact the Ramsey County Recorder's Office.

STATE OF MINNESOTA  
County of Ramsey  
OFFICE OF THE REGISTER OF DEEDS  
This instrument is a true and correct copy of the original as recorded in the books of the Register of Deeds of the County of Ramsey, State of Minnesota, on the 25th day of May, 1883, at 10:00 A.M., and is made available for information purposes only.  
pages 18 of 18  
By: *William H. Sigler*  
Deputy



I, Greenleaf Clark, owner and proprietor of lots twenty six (26) to forty (40) both inclusive of Milken and Heywards Addition to St. Paul of outlots, hereby certify that I have caused the same to be surveyed and subdivided into blocks and lots, also have surveyed into blocks and lots the South half (S 1/2) of Northwest quarter (NW 1/4) of Southwest quarter (SW 1/4) of section twenty five (25) and also the Northeast quarter (NE 1/4) of the Southeast quarter (SE 1/4) of Southwest quarter (SW 1/4) of section twenty five (25) lying North of Right of Way of St. Paul, Minneapolis, and Manitoba Railroad, all in Township twenty nine (29), Range twenty three (23), 4th Meridian Addition to St. Paul, as shown on this map, and I hereby give and dedicate to the public use forever, all Parks, Streets, and Alleys as shown hereon.  
Witness my hand and seal this 7th day of April  
A. D. 1883  
In presence of  
*William H. Sigler*  
*William H. Sigler*

We hereby certify that we have surveyed and plotted the within described property and have placed iron monuments as required by law; and that the same is correct.  
*Elmer & Newell*  
Civil Engineers

Examined and Approved  
St. Paul 22 day of May A. D. 1883  
*W. A. Johnson*  
City Engineer

Taxes paid & Transfer Entered May 24 1883  
*W. A. Johnson*  
County Auditor

We hereby certify that this plat or map is a true and correct copy of an original plat or map of said Addition this day approved, signed and accepted by this Commission  
Dated April 14th 1883

*W. A. Johnson*  
*W. A. Johnson*  
Plat Commission

Accepted by *William H. Sigler*  
Deputy Recorder  
May 15 1883  
*W. A. Johnson*  
County Auditor

26 25  
35 36

County of Ramsey } ss  
State of Minnesota }  
On this 25th day of May A. D. 1883  
personally appeared before me Greenleaf Clark, to me known to be the identical person who executed the foregoing certificate, and he acknowledged the same to be his free act and deed.  
Witness my hand and Notarial Seal  
*William H. Sigler*  
Notary Public  
Ramsey County  
Minnesota

*William H. Sigler*  
Deputy

18