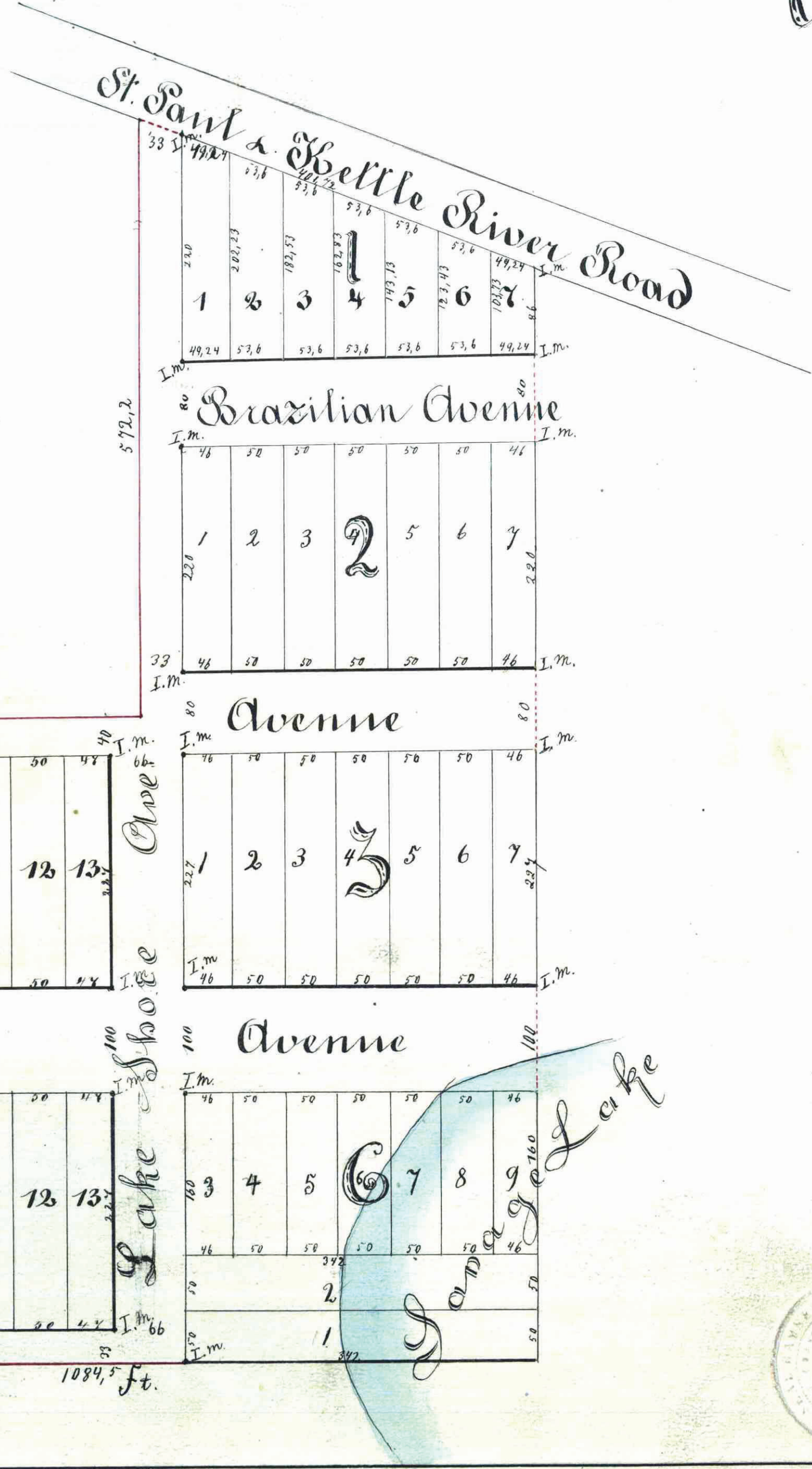


# John F. Eisenmenger's 4<sup>th</sup> Addition

STATE OF MINNESOTA, ss.  
 County of Ramsey,  
 Office of the Register of Deeds.  
 This is to certify that the within instrument was filed for Record in this Office, at St. Paul, on the 12<sup>th</sup> day of July, A. D. 1886, at 10 o'clock P. M., and that the same was duly recorded in Book No. 2 of pages 141-142.  
 By: *R. F. Willey* Register of Deeds, Deputy.

This plat document is an UNOFFICIAL copy of a Subdivision Plat or Registered Land Survey and is made available for information purposes only.  
 To obtain an official copy please contact the Ramsey County Recorder's Office.



I hereby certify to having surveyed and platted the property as described on this map as John F. Eisenmenger's 4<sup>th</sup> Addition, and have placed iron monuments at the corners of each and every block as shown on this map, and the same is correct.

St. Paul July 10<sup>th</sup> 1886  
*E. Hoerich* Surveyor

State of Minnesota  
 County of Ramsey  
 On this 10<sup>th</sup> day of July, A. D. 1886, personally appeared before the undersigned Edward Hoerich to me well known, and acknowledged that he executed the foregoing certificate as his own free act and deed.

*M. F. Propping*  
 Notary Public,  
 Ramsey Co., Minn.

State of Minnesota  
 County of Ramsey  
 On this 10<sup>th</sup> day of July, A. D. 1886, personally came before me John F. Eisenmenger and Elisa Eisenmenger, his wife, to me well known, and they acknowledged that they executed the foregoing certificate for the uses and purposes therein expressed.

*M. F. Propping*  
 Notary Public,  
 Ramsey County, Minn.

Accepted and approved this 10<sup>th</sup> day of July, A. D. 1886.

*W. Starkey* Stat. Commissioners  
*James D. Drien* County Auditor  
 Ramsey Co., Minn.  
*E. Oliver* Deputy

Taxes paid July 10<sup>th</sup> 1886.

This is to certify that, John F. Eisenmenger and Elisa Eisenmenger, his wife, proprietors of a tract of land described as follows to wit: Commencing on Quarter Sec. corner on South line of Sec. 6 Town 29 north Range 22 West, thence North along Quarter Sec. line 627 ft, thence East parallel with South line of sd. Sec. 6 709 1/2 ft thence due north parallel with Quarter Sec. line 627 ft. to intersection with South line of the St. Paul and Kettle River Road thence South 69° East 407 1/2 ft. thence due South parallel to Quarter Sec. line 1053 ft to intersection with South line of sd. Sec. 6 thence due West along south line of sd. Sec. 1084 1/2 ft. to place of commencement have caused the same to be surveyed and platted, and hereafter known as, John F. Eisenmenger's 4<sup>th</sup> addition, as shown by this plat and hereby dedicate to the public, and for the public use forever, all the streets and avenues as herein indicated.

Witness our hands and seals, this 10<sup>th</sup> day of July 1886.

In presence of *John F. Eisenmenger*  
*M. F. Propping*  
*Elise Eisenmenger*

