

PRICE'S ADDITION TO WHITE BEAR MINNESOTA.

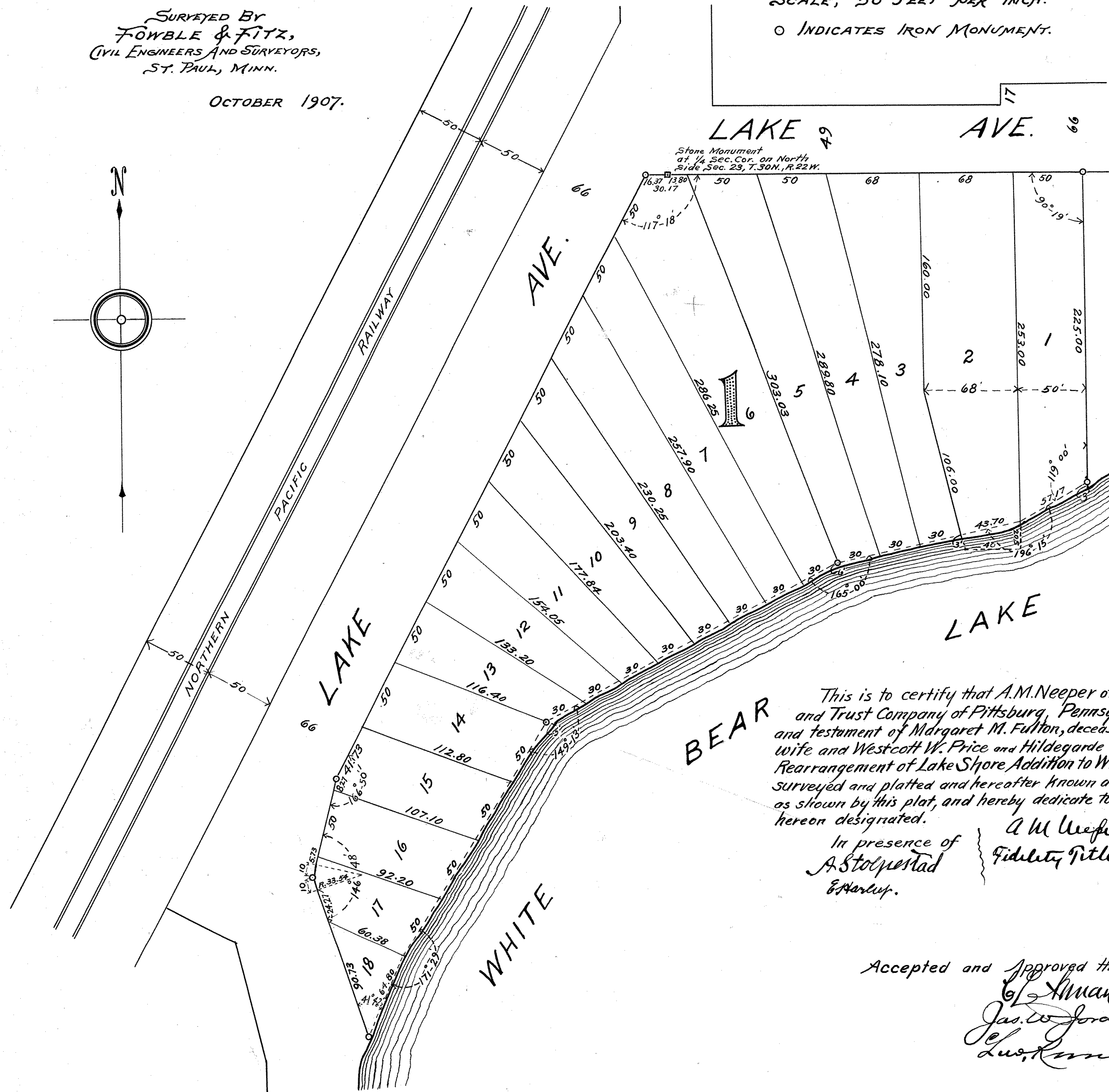
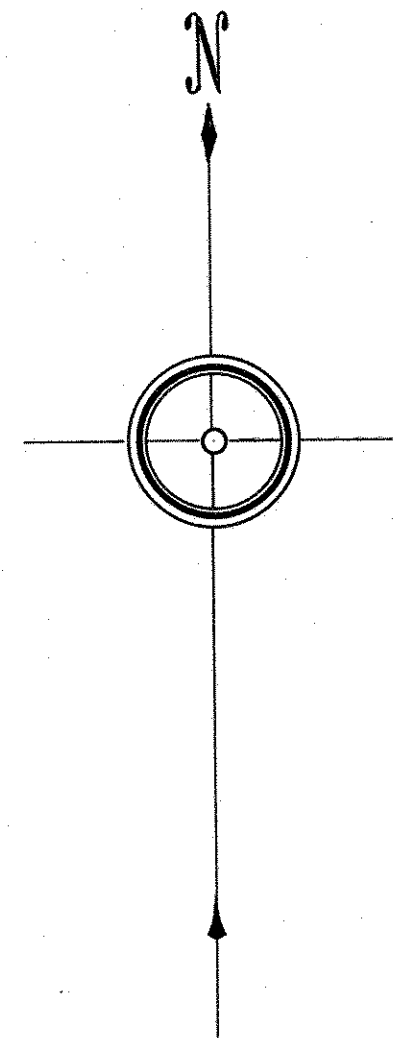
1350

SURVEYED BY
FOWBLE & FITZ,
CIVIL ENGINEERS AND SURVEYORS,
ST. PAUL, MINN.

OCTOBER 1907.

SCALE, 50 FEET PER INCH.

○ INDICATES IRON MONUMENT.



St. Paul Minn, Dec 24. 1907.
I hereby certify that I have surveyed and
platted the property as described on this map as
Price's Addition to White Bear, Minnesota, and
have placed stone and iron monuments as here-
on shown and the same is correct.
I further certify that there is no wet land nor
public highways within the boundary lines of this
plat.
Milton Fowble
Surveyor.

This is to certify that A.M. Neepfer of Pittsburg, Pennsylvania and the Fidelity Title
and Trust Company of Pittsburg, Pennsylvania, a Corporation, trustees under the last will
and testament of Margaret M. Fulton, deceased, and Frederick L. Breen and Ruth W. Breen his
wife and Westcott W. Price and Hildegard Risley Price his wife, proprietors of Block One (1)
Rearrangement of Lake Shore Addition to White Bear, Minnesota, have caused the same to be
surveyed and platted and hereafter known as PRICE'S ADDITION TO WHITE BEAR, MINNESOTA,
as shown by this plat, and hereby dedicate to the public, for public use forever the Avenues
hereon designated.

In presence of
A. Stolperstad
Estherup.

A. M. Neepfer by J. C. Fulton Attorney in fact
Fidelity Title & Trust Co. by J. C. Fulton Attorney in fact
Frederick L. Breen
Ruth W. Breen
Westcott W. Price
Hildegard Risley Price

Accepted and approved this 4th day of Jan'y A.D. 1908.

J. L. Homan } Plat Commissioners.
Jas. W. Jordan }
L. W. Rindler City Engineer.