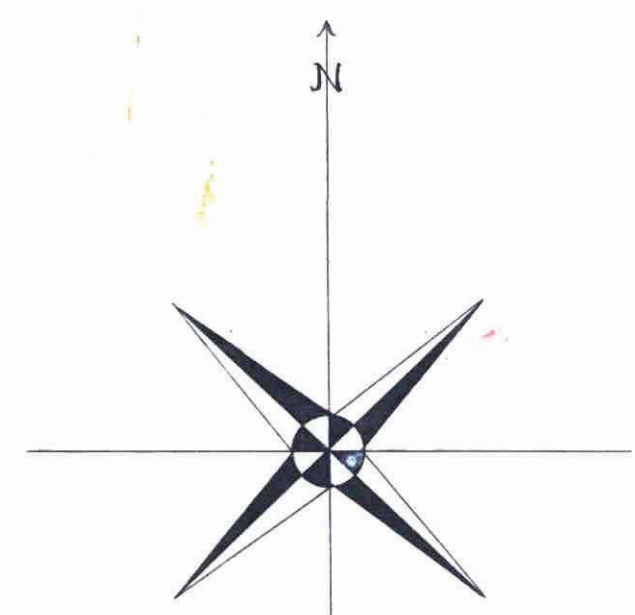


This plat document is an UNOFFICIAL copy of a Subdivision Plat or Registered Land Survey and is made available for information purposes only. To obtain an official copy please contact the Ramsey County Recorder's Office.

J. R. BARTON'S ADDITION

TO THE CITY OF ST. PAUL

Scale 50ft.=1In.
1884.



We, Jesse R. Barton, bachelor, William T. Barton and Emma J. Barton his wife, Alice R. Barton owners of the South half (1/2) of the North ~~half~~ East one fourth (1/4) of the South East one fourth (1/4) of section Eleven (11) in Township N^o twenty eight (28) North of Range N^o twenty three (23) West of the fourth (4) Principal Meridian of Minnesota, do hereby certify that we have caused the same to be surveyed and platted into blocks, lots, streets and alleys under the title of J. R. Barton's Addition to the City of St. Paul as represented on this map unto the end that the same may be recorded as the law directs, and we do hereby give and dedicate to the public and for public use forever all the streets and alleys represented on the said map.

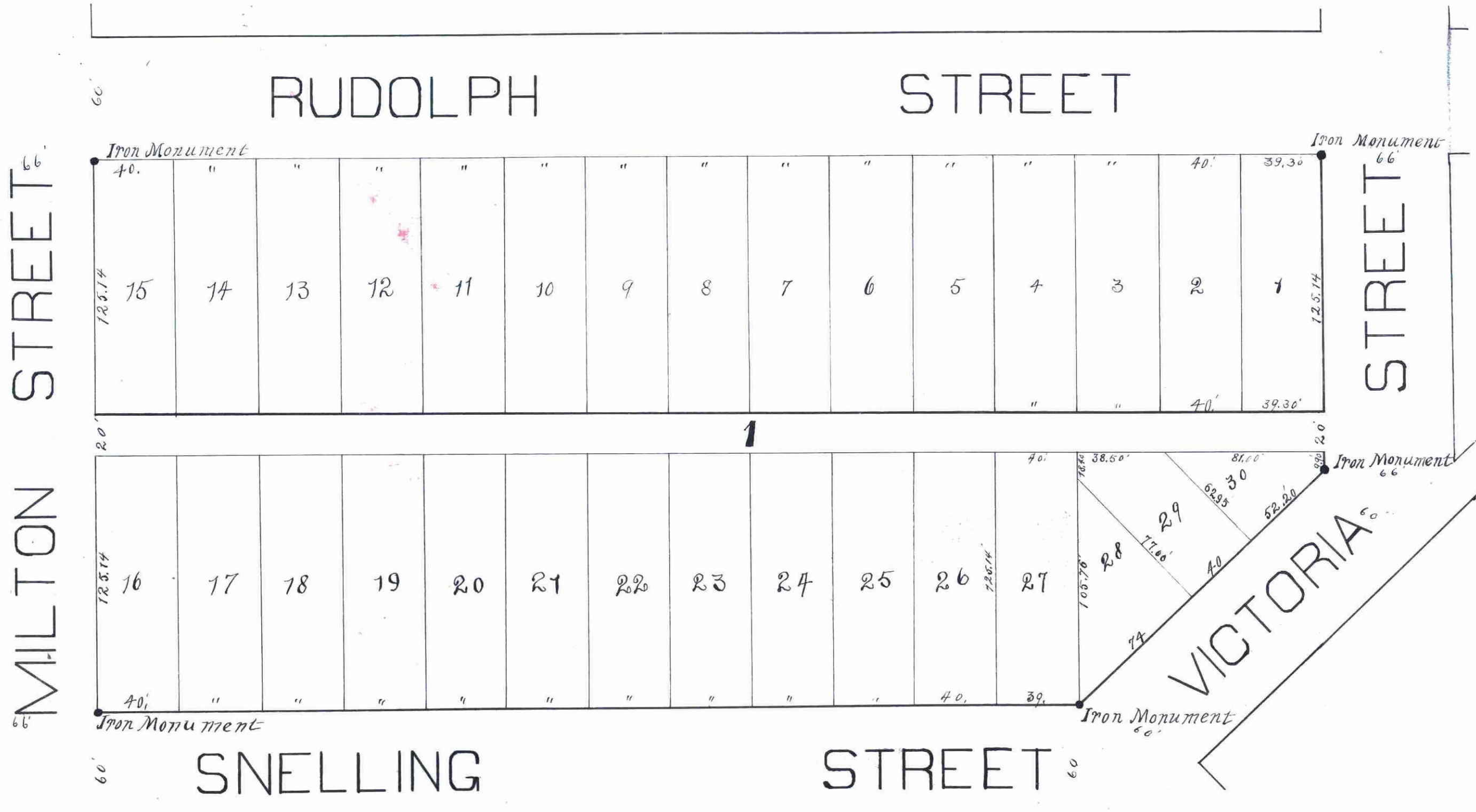
Witness our hands and seals this Tenth day of November, A.D. 1884

In presence of
Otto Kueffner }
W. J. Barton
Emma J. Barton
Alice R. Barton
Jesse R. Barton

State of Minnesota } S.S.
Ramsey County

I Otto Kueffner, a notary public within and for said county of Ramsey do hereby certify that on this day personally came before me Jesse R. Barton, William T. Barton and Emma J. Barton and Alice R. Barton to me known to be the persons described in and who executed the foregoing certificate and acknowledged having executed the same freely and for the purposes therein described, and ~~that they are not married~~ Witness my hand and notarial seal this Tenth day of November A.D. 1884

Otto Kueffner
Notary Public
Ramsey County
Minnesota



Rugg's Addition

I hereby certify that I have examined the above plat and recommend its approval.

City Engineer.

Approved Seventh day of July A.D. 1885.
S. J. Tolson } Plat Commission
Jas Starkey }

We hereby certify that this plat or map is a true and correct copy of an original plat or map of J. R. Barton's addition to the city of St. Paul this day accepted and approved by this commission S. J. Tolson } Plat Commission
Jas Starkey }
Date Seventh day of July 1885

I do hereby certify to having surveyed and platted the above described property and that the same is correct.

F. E. Simar
Civ. Engr

State of Minnesota } S.S.
Ramsey County }
I Otto Kueffner a notary public within and for said county of Ramsey do hereby certify that on this day personally came before me F. E. Simar to me known to be the person who executed the foregoing certificate and acknowledged having executed the same freely and voluntarily. Witness my hand and notarial seal this Tenth day of November A.D. 1884
Otto Kueffner
Notary Public
Ramsey County
Minnesota

STATE OF MINNESOTA }
County of Ramsey }
Office of the Register of Deeds.
This is to certify that the within instrument was filed for Record in this Office, at St. Paul, on the 29th day of October A. D. 1885 at 1:22 o'clock P. M., and that the same was duly recorded in Book 5 of Plats
By: R. L. Schilling
Register of Deeds

CITY TREASURER'S OFFICE
ST. PAUL, MINN.
SEP 29 1885
RECEIVED
CITY TREASURER