

Auditor's Subdivision No 43.

5851 1282

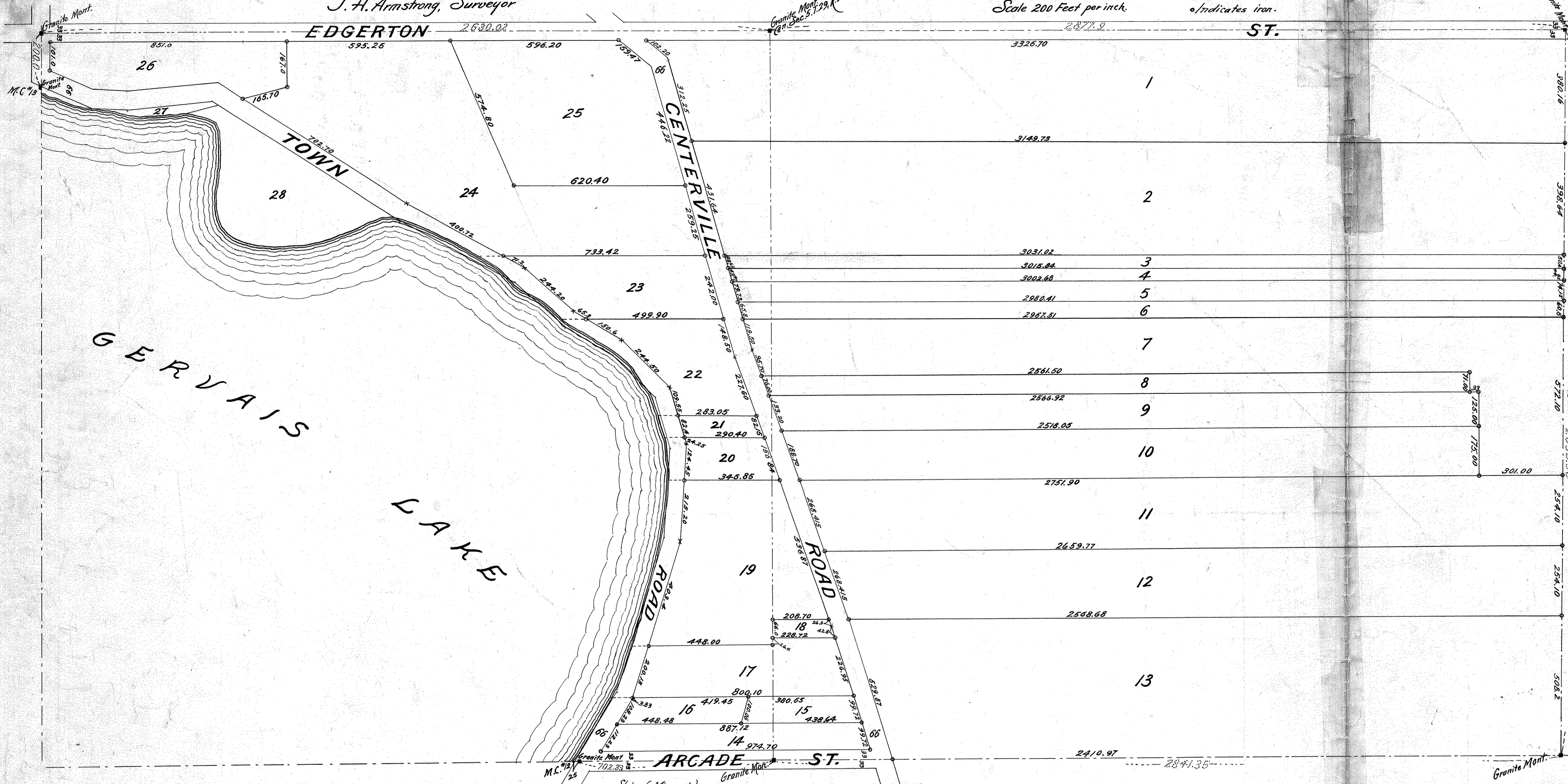
RAMSEY CO. MINN.

Recorded April 10th 1906.

J. H. Armstrong, Surveyor

Scale 200 Feet per inch.

o indicates iron.



I, J. H. Armstrong, County Surveyor of Ramsey County, Minn., hereby certify to having surveyed & plotted the property as described on this map upon request and by order of the County Auditor, as Auditor's Subdivision No. 43 Ramsey Co. Minn., and have placed iron monuments at the corners of each and every block as shown on this map, and the same is correct.

J. H. Armstrong
County Surveyor

State of Minnesota, }
County of Ramsey, }
On this 24th day of February A.D. 1906, personally appeared before me, J. H. Armstrong, County Surveyor of Ramsey County, Minn., the well known and acknowledged that he executed the foregoing certificate as his own free act and deed, as such County Surveyor.

J. W. Erickson
Notary Public, Ramsey Co. Minn.

State of Minnesota, ss. }
County of Ramsey, }
I, Edw. G. Kramer, County Auditor of the County of Ramsey and state aforesaid, do hereby certify that in compliance with and according to the provisions of a Sec 72 Chapter 2 General Statutes of 1902, I have as said County Auditor, caused "The East 1/2 of Sec. 5, T. 29, R. 22, to be surveyed and plotted and hereafter known as, Auditor's Subdivision No. 43 Ramsey Co. Minn., as shown on this plot.

Witness my hand & official seal this 26th day of February A.D. 1906.
In presence of
J. W. Erickson }
Edw. G. Kramer }
Notary Public }
County of Ramsey, }
County Auditor

State of Minnesota, }
County of Ramsey, }
On this 26th day of February A.D. 1906, personally appeared before me Edw. G. Kramer, County Auditor of Ramsey County, Minn., the well known, and acknowledged that he executed the foregoing certificate as his own free act and deed as such County Auditor.

J. W. Erickson
Notary Public Ramsey Co. Minn.
My Commission Expires Nov. 19, 1908.

Accepted and approved this fourth day of April A.D. 1906.
J. W. Erickson } Pilot
J. W. Erickson } Commissioners.
Lawrence } City Engineer.