

C.C. EMERSON'S ADDITION

ST. PAUL, MINN.

309763

Scale 60 Feet per inch

JOHN B. IRVINE SURVEYOR

I hereby certify to having surveyed and platted the property as described on this map as "C.C. EMERSON'S ADDITION, ST. PAUL, MINN.", and have placed iron monuments at the corners of each and every block as shown on this map, and the same is correct.

John B. Irvine
Surveyor.

State of Minnesota } On this 2nd day of May A.D.
County of Ramsey } 1905, personally appeared before
the undersigned JOHN B. IRVINE, to me well known, and
acknowledged that he executed the foregoing certificate
as his own free act and deed.

F. L. Brown
Notary Public, Ramsey Co. Minn.

This is to certify that, "Carroll C. Emerson and Mary H. Emerson, his wife," proprietors of Blocks 2 and 3, Kidd's Re. of Blks. 5 & 6, Halldeman's Add., have caused the same to be surveyed and platted, and hereafter known as "C.C. Emerson's Addition, St. Paul, Minn." as shown by this plat, and hereby dedicate to the public, and for the public use forever, all the streets, avenues and alleys as herein indicated.

Witness our hands and seals this 3rd day of May A.D. 1905.

In presence of:

John Cody } *Carroll C. Emerson*
Mary H. Emerson

State of Minnesota } On this 3rd day of May
County of Ramsey } A.D. 1905, personally came
before me the undersigned, "Carroll C. Emerson and
Mary H. Emerson," to me well known, and they
acknowledged that they executed the foregoing
certificate as their own free act and deed.

F. L. Brown
Notary Public, Ramsey Co., Minn.

Accepted and approved this 2nd day of May
A.D. 1905.

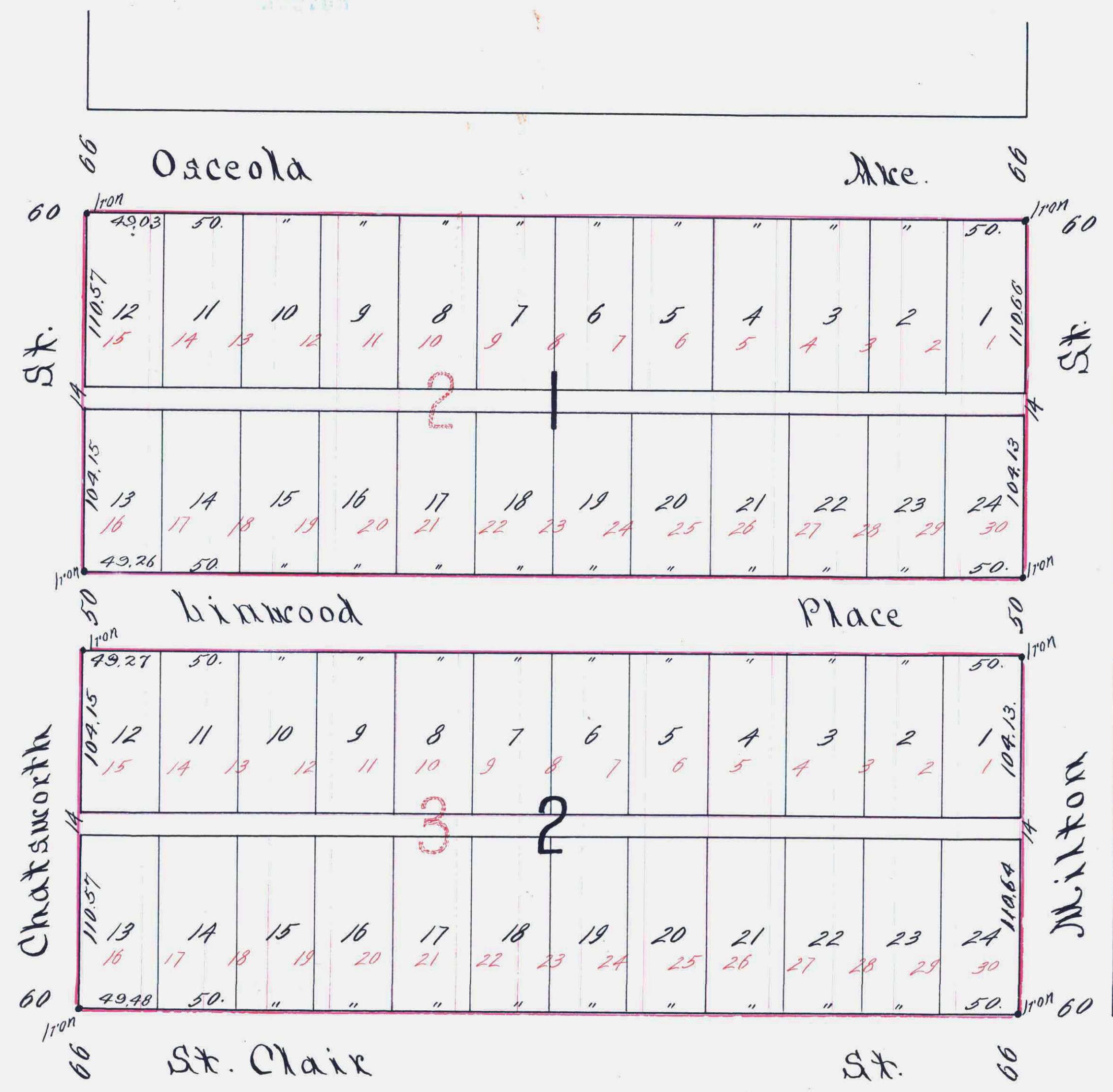
W. A. Emerson } *Plat.*
James H. Jordan } *Commissioners*
L. W. Halldeman } *City Engineer.*

Accepted by the Common Council of the City of
St. Paul, on the 4th day of *May 1905*
George W. Huntington
City Clerk

This plat document is an UNOFFICIAL copy of a Subdivision Plat or Registered Land Survey and is made available for information purposes only.

RAMSEY COUNTY

To obtain an official copy please contact the Ramsey County Recorder's Office.



State of Minnesota }
County of Ramsey }
This is to certify that the within instrument was filed for record in this office at St. Paul, on the 12th day of *May*, A. D. 1905, at 2 o'clock P. M., and that the same has duly impressed in Book *20* of *Plat* Page *19* of *John B. Irvine* Registrar of Deeds.

TAXES PAID AND TRANSFER ENTERED
MAY 13 1905
EDW. G. KRAHMER,
COUNTY AUDITOR

CITY TREASURER'S OFFICE,
ST. PAUL, MINN.
MAY - 2 1905

Taxes for the year 1904 on the lands described within paid,
MAY 2 1905
W. A. Emerson - *assessors*
ST. PAUL, MINN.
JESSE FOOT, County Treas.

TAXES
For 1903 and PRIOR years,
PAID
EDW. G. KRAHMER,
COUNTY AUDITOR