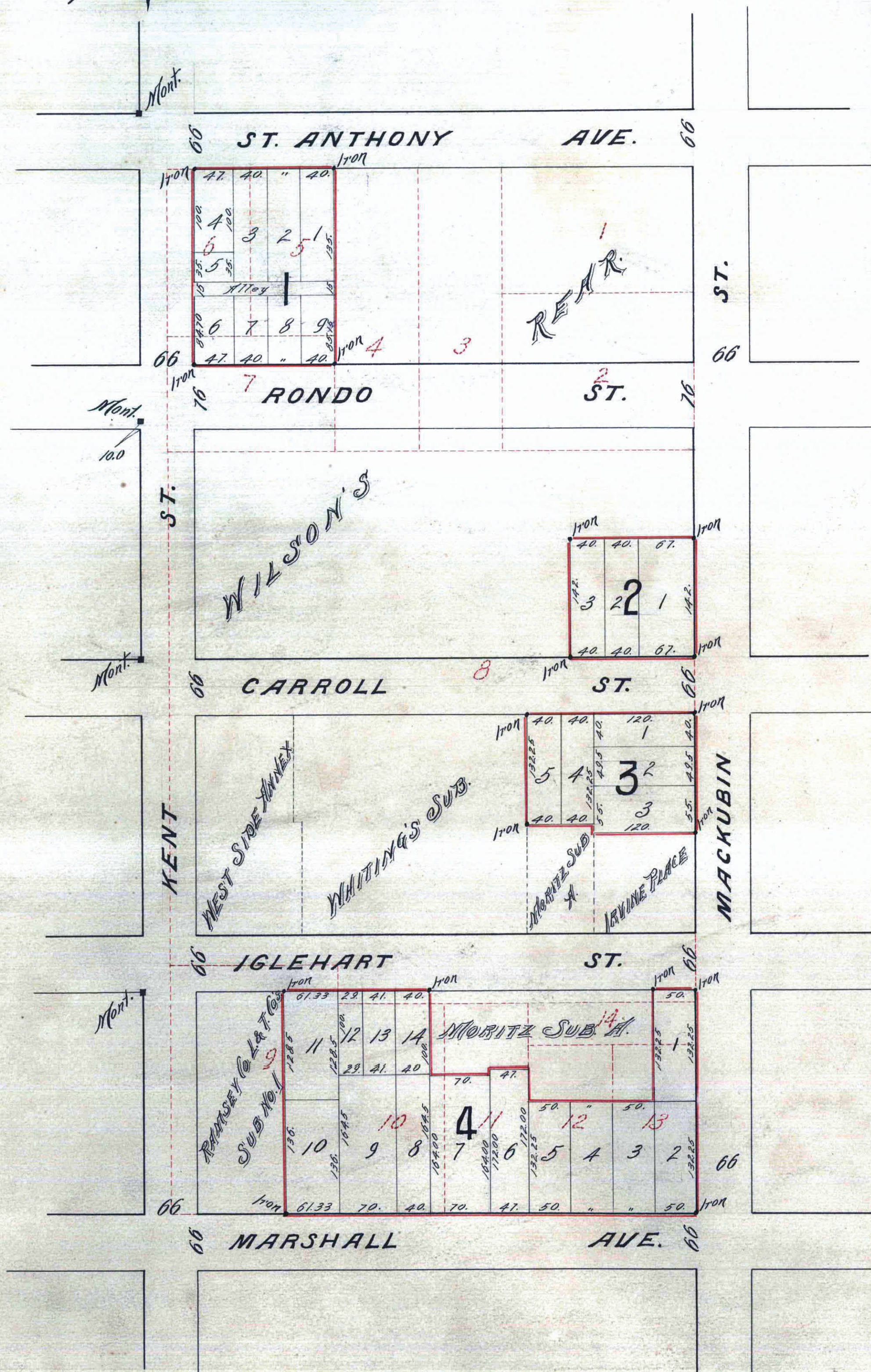


# Auditor's Subdivision No. 31

ST. PAUL MINN.

JOHN B. IRVINE SURVEYOR

Scale 100. feet per inch



St. Paul, Minn. Nov. 11<sup>th</sup> 1902.  
I, hereby certify to having surveyed and platted the property as described on this map as Auditor's Sub-Division No. 31 St. Paul Minn. and have placed monuments at the corners as hereon indicated and the same is correct.

*John B. Irvine*  
County Surveyor Ramsey Co. Minn.  
State of Minnesota }  
County of Ramsey } ss On this 11<sup>th</sup> day of Nov. A.D. 1902 before me the undersigned personally appeared JOHN B. IRVINE to me well known and acknowledged that he executed the foregoing certificate as his own free act and deed.

*J. L. Brown*  
Notary Public Ramsey Co. Minn.

State of Minnesota }  
County of Ramsey } ss I, W. R. Johnson, County Auditor of the County of Ramsey State aforesaid, do hereby certify that in compliance with and according to the provisions of Section 1626 General Statutes of 1894, I have caused Marshall's Subdivision of Block 27 Mackubin and Marshall's Add. to St. Paul except Wilson's Rear, West Side Annex, Whiting's Sub, Moritz Sub. A., IRVINE PLACE & Ramsey Co. Loan and Trust Co's SUBD. No. 1 to be surveyed and platted & hereafter known as Auditor's Subdivision No. 31 St. Paul Minn. as shown on this plat.

Witness my hand & seal this 11<sup>th</sup> day of Nov. A.D. 1902  
In presence of  
*Clayton* }  
Siles & Foreman } County Auditor.

State of Minnesota }  
County of Ramsey } ss On this 11<sup>th</sup> day of Nov. A.D. 1902 before me the undersigned personally appeared W. R. JOHNSON to me well known and acknowledged that he executed the foregoing certificate as his own free act & deed.

*Siles & Foreman*  
Notary Public Ramsey Co. Minn.

Accepted and approved this 14<sup>th</sup> day of Nov. A.D. 1902  
*John J. Hoffman* }  
*John J. Hoffman* } Plat Commissioners  
*John J. Hoffman* } City Engineer

Accepted by the Common Council of the City of St. Paul on the 2<sup>nd</sup> day of Dec. A.D. 1902  
*John J. Hoffman*  
City Clerk.

This plat document is an UNOFFICIAL copy of a Subdivision Plat or Registered Land Survey and is made available for information purposes only.  
To obtain an official copy please contact the Ramsey County Recorder's Office.

STATE OF MINNESOTA }  
County of Ramsey } ss  
Office of the Register of Deeds  
This is to certify that the within instrument was filed and recorded in the office of the Register of Deeds on the 10<sup>th</sup> day of December A. D. 1902 at 10 o'clock A. M. and that the same was duly indexed in Book 45 Page 18  
*John J. Hoffman*  
Register of Deeds  
By \_\_\_\_\_ Deputy.

482284