

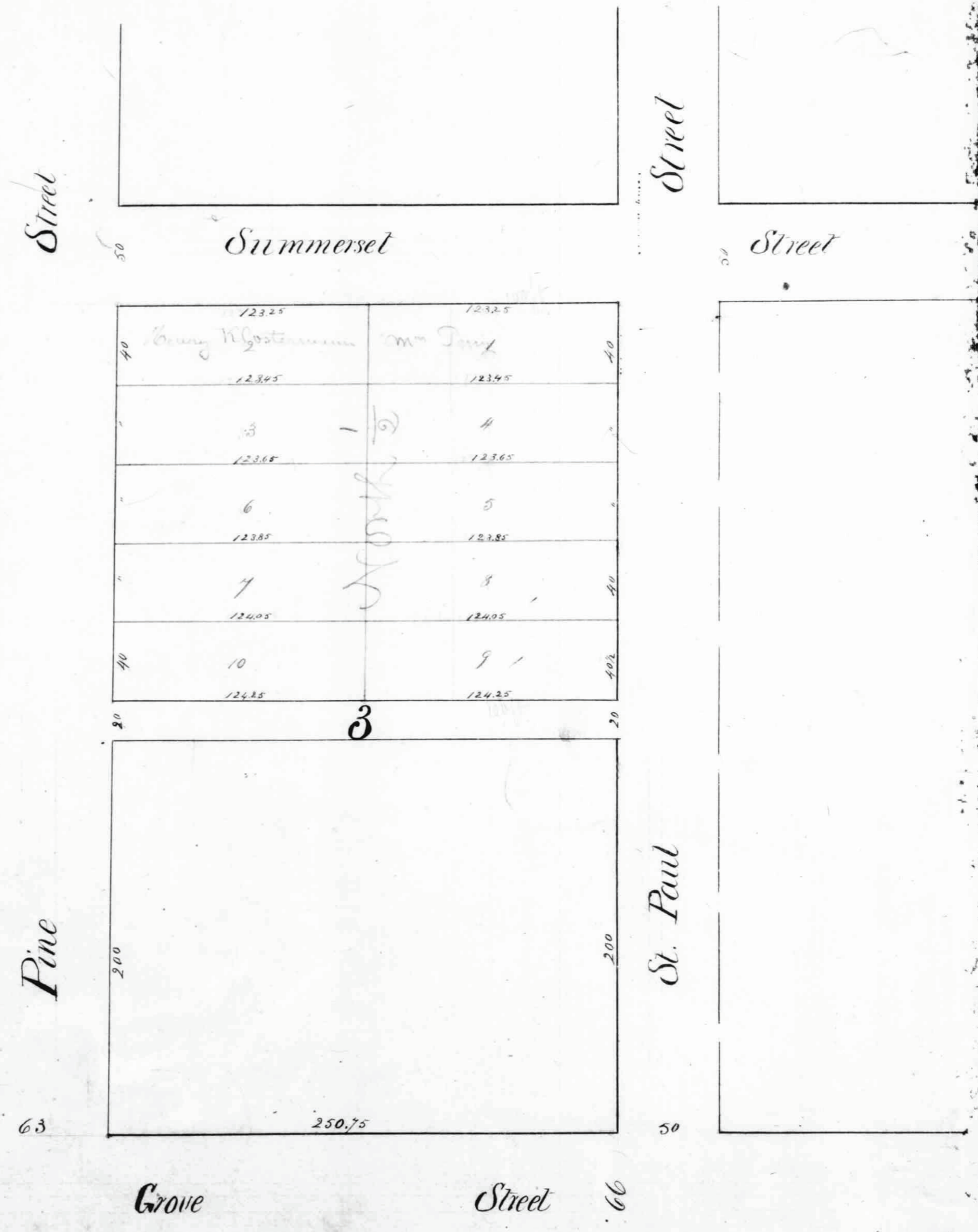


State of Minnesota
 County of Ramsey, ss. on this 6th October A.D. 1859, personally
 appeared before me Martin Bach, and acknowledged
 the Plot, and survey annexed of the subdivision of the
 north 1/2 of Block Number 3, to Patterson, addition
 to the city of Saint Paul and we first and true,
 to be Samuel }
 Notary Public }
 Martin Bach

Martin Bach's Subdivision of the North 1/2 of Block 3
 Portions Add^d to the City of St. Paul

This plat document is an UNOFFICIAL copy of a Subdivision Plat or Registered Land Survey and is made available for information purposes only.

To obtain an official copy please contact the Ramsey County Recorder's Office.



Office of Register of Deeds
 Ramsey County, Minn.
 I hereby certify that the annexed
 plat of Bach's subdivision
 of the N 1/2 of Block 3 Patterson's
 addition to St. Paul was filed
 in this office for record on
 the 7th day of October A.D.
 1859 at 8 1/4 Am.

Edward Steiman
 Reg of Deeds
 for Thomas Lyons Deft