

WATSON'S

DIVISION

"D"

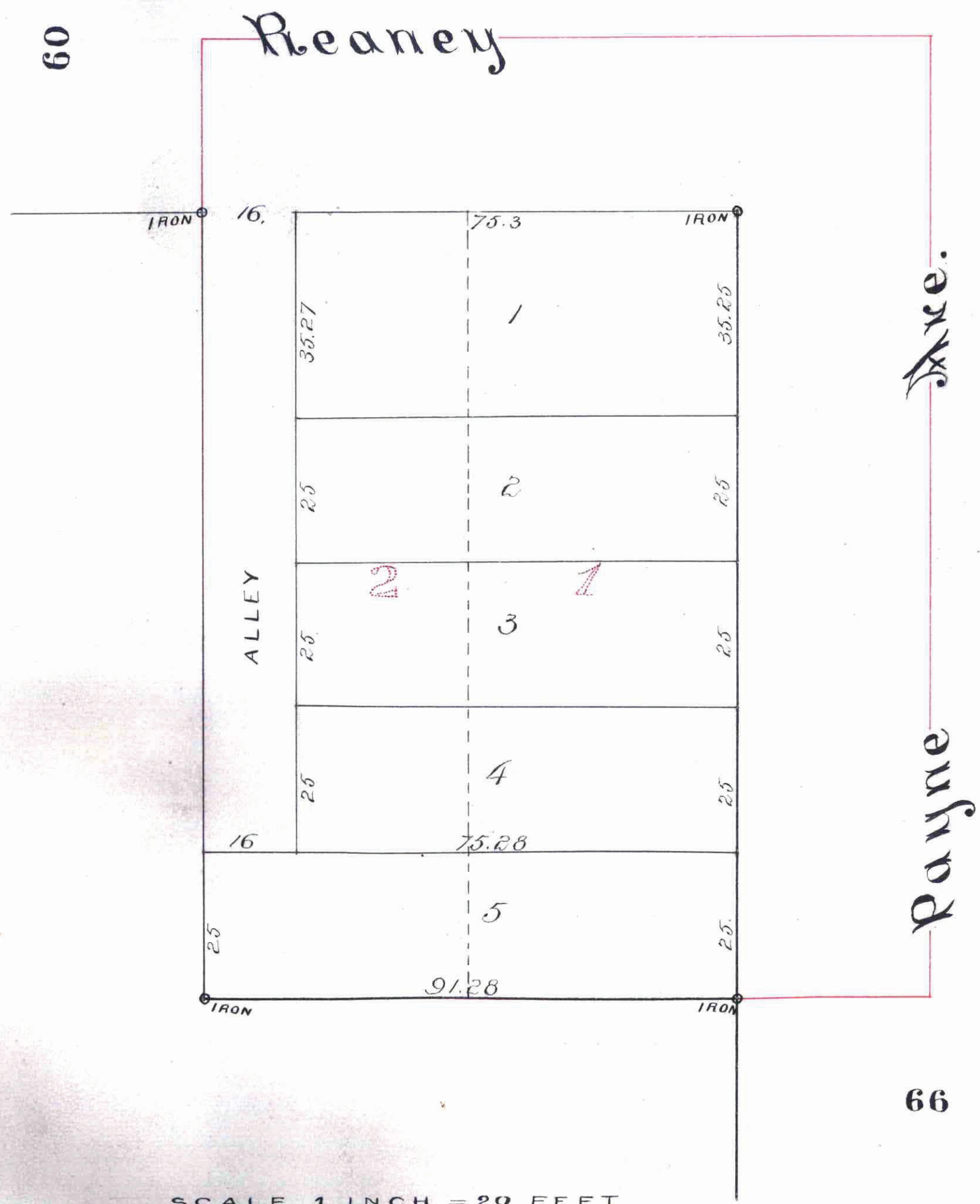
ST. PAUL MINN.

100578

This plat document is an UNOFFICIAL copy of a Subdivision Plat or Registered Land Survey and is made available for information purposes only.



To obtain an official copy please contact the Ramsey County Recorder's Office.



SCALE 1 INCH = 20 FEET

I hereby certify to having surveyed and platted the property as described on this map as Watson's Division "D", and have placed iron monuments at the corners hereon indicated, and the same is correct.

St Paul Minn Oct 10th 1889.

D. L. Curtice,
Surveyor.

State of Minnesota } ss. On this 14th day of October A.D. 1889 before me the under-
County of Ramsey. } signed personally appeared D. L. Curtice to me well known and acknowledged that he executed the foregoing certificate as his own free act and deed.

Wm H. Hyndman
Notary Public
Ramsey Co.
Minn.

This is to certify that we, John J. Watson and Joanna B. Watson his wife are the owners of Lots 1 and 2, Block 3, Borup and Payne's Addition to St. Paul, Minn., and have caused the same to be surveyed and platted and hereafter known as Watson's Division "D" as shown by this plat, and hereby dedicate to the public and for the public use forever all the streets, avenues and alleys as hereon indicated. Witness our hands and seals this 14th day of October A.D. 1889.

In presence of }
John J. Watson }
Joanna B. Watson }
Wm H. Hyndman }
Seal Seal

State of Minnesota } ss. On this 14th day of October A.D. 1889 before me the undersigned
County of Ramsey. } personally appeared John J. Watson and Joanna B. Watson his wife, to me well known and acknowledged that they executed the foregoing instrument as their own free act and deed.

Wm H. Hyndman
Notary Public
Ramsey Co.
Minn.

Accepted and approved this 30th day of November A.D. 1889

Wm Van Dyke }
W. J. Howell } C. L. A. T.
City Engineer. } Commissioners.

Accepted by the Common Council of the City of St. Paul on the 17 day of November 1889.

Thos. A. Prud'homme
City Clerk.
By Jas. H. Hillman

CITY TREASURER'S OFFICE
ST. PAUL, MINN.
NOV 27 1889
ASSESSMENTS PAID
Raymond Rais
CITY TREAS.

Office of COUNTY TREASURER
ST. PAUL, MINN.
NOV 6 1889
1889 TAX PAID.
A. M. NELSON, County Treasurer
Grady

Taxes Paid and Transfer Entered

DEC 24 1889

M. F. KAIN, County Auditor.

By [Signature]

No 100578
STATE OF MINNESOTA } ss
County of Ramsey }
Office of the Register of Deeds.
This is to certify that the within instrument was filed for Record in this office, at St. Paul, on the 14th day of October A. D. 1889 at 9 o'clock A.M., and that the same was duly recorded in Book... 124... page... 14.
By [Signature]
Register of Deeds