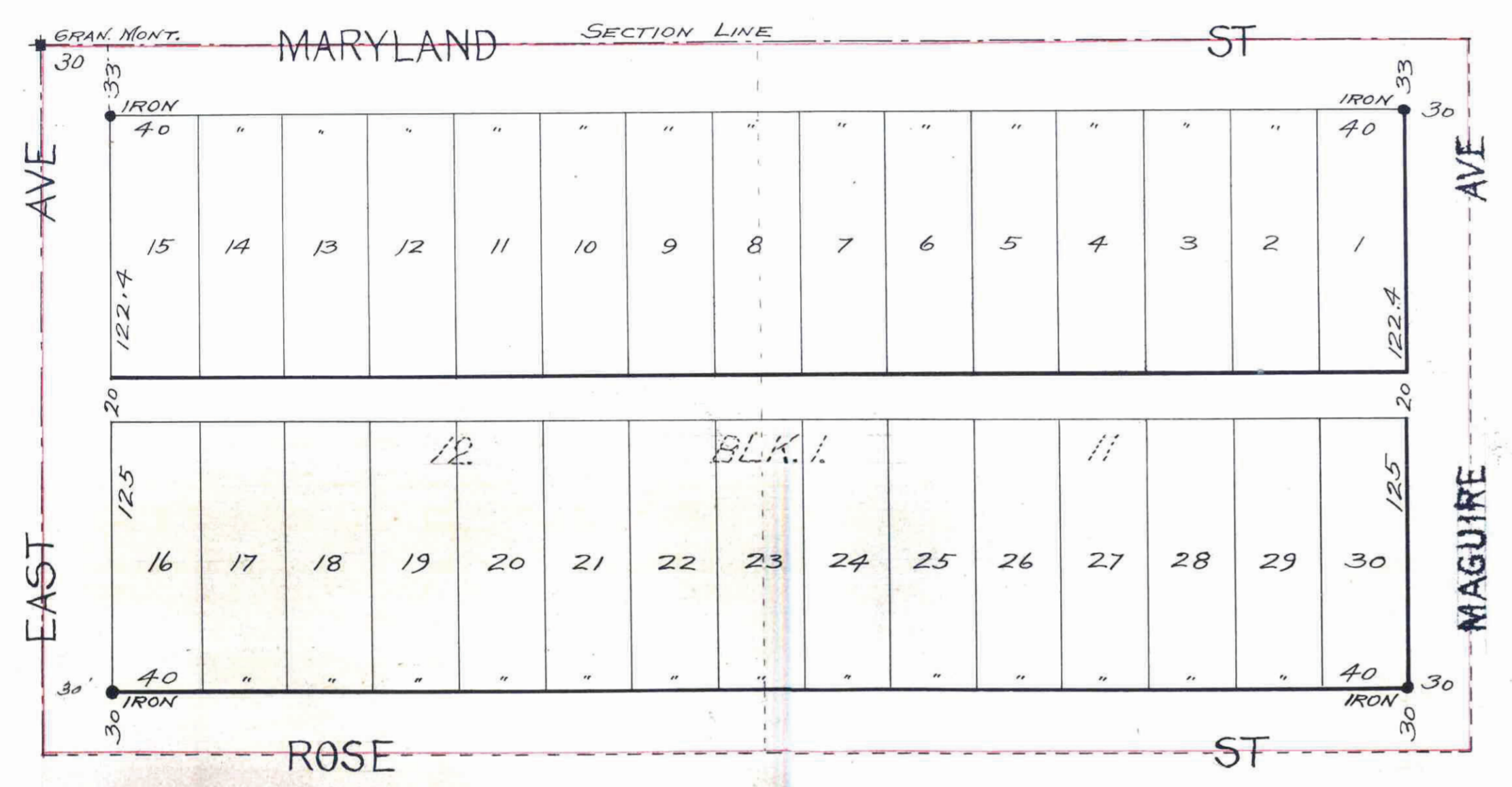


BEAVER LAKE SUBDIVISION NO. 1

SCALE 60 FT. PER INCH

SURVEYED BY
FOWBLE & FITZ,
LAND SURVEYORS,
ST. PAUL, MINN.



We hereby certify to having surveyed and platted the property as described on this map as "BEAVER LAKE SUBDIVISION No. 1" and have placed iron monuments as shown on this map and the same is correct.

J. Milton Fowble
J. Henry Fitz
SURVEYORS.

State of Minnesota }
County of Ramsey } On this 9th day of May, A.D. 1892,
before me personally appeared *J. Milton Fowble* and *J. Henry Fitz*
to me known to be the persons described in and who executed the
foregoing instrument and acknowledged that they executed the same
in their free act and deed.

Leonard J. Dobner
Notary Public, Ramsey Co., Minn.

This is to certify that *William Hendricks* and *Grace H. Hendricks*
his wife, *Samuel M. Magoffin* and *Elizabeth R. Magoffin*, his wife,
proprietors of the N. 330.4 ft. of the West 660 ft. of lots 11 and 12
Block 1, Beaver Lake Addition have caused the same to be sur-
veyed and platted and hereafter known as "BEAVER LAKE
SUBDIVISION No. 1" as shown by this plat and hereby dedicate to the
public, for public use forever, all the streets, avenues and alleys as
herein indicated.

Witness our hands and seals this 12th day of Nov. AD, 1892.

In presence of
Sydney Watson
W. H. Williams

Samuel M. Magoffin (L.S.)
Elizabeth R. Magoffin (L.S.)
William Hendricks (L.S.)
Grace H. Hendricks (L.S.)

State of Minnesota }
County of Ramsey } On this 12th day of November, A.D. 1892,
before me personally appeared *William Hendricks* and *Grace H. Hendricks*
his wife, *Samuel M. Magoffin* and *Elizabeth R. Magoffin*, his wife,
to me known to be the persons described in and who executed
the foregoing instrument and acknowledged they executed the same in
their free act and deed.

W. H. Williams
Notary Public, Ramsey Co., Minn.

Accepted and approved this 17th day of Dec-
A.D. 1892.

Mo. H. Lora
W. E. Ruston
PLAT COMMISSION
CITY ENGINEER

St. Paul, Minn. May 11th 1892.

I hereby certify that I have made all the necessary surveys
to determine the accuracy of the annexed plat and find that the
monuments for the guidance of future surveys have been correctly placed
as shown on the plat, that the boundary lines of the land platted are
correctly shown on the plat and that the sizes of all fractional lots
are as given on the plat.

David S. Lortie
County Surveyor, Ramsey Co., Minn.

STATE OF MINNESOTA, } ss.
County of Ramsey, }
Office of the Register of Deeds.
This is to certify that the within instrument
was filed for record in this office at St. Paul,
on the 31st day of Dec. 1892, at 2 o'clock P.M., and that the
same was duly recorded in Book 16
of Deeds, Page 27.

Chas. Haas
Register of Deeds.
Deputy.

This plat document
is an UNOFFICIAL
copy of a
Subdivision Plat or
Registered Land Survey
and is made available for
information purposes only.

To obtain an official copy
please contact the Ramsey
County Recorder's Office.

Taxes Paid and Transfer Entered,
\$8.00
M. H. Lora, County Auditor,
St. Paul, Minn.

Office of County Treasurer,
DEC 23 1892
1891 TAX PAID,
M. H. BELSON, County Treasurer.