

DAYTON PLACE ADDITION

TO ST. PAUL
Scale 40 ft. per inch.

This plat document is an UNOFFICIAL copy of a Subdivision Plat or Registered Land Survey and is made available for information purposes only.

To obtain an official copy please contact the Ramsey County Recorder's Office.



State of Minnesota } ss.
County of Ramsey }
We Daniel D. Merrill and Alice K. Merrill the proprietors of Dayton Place Addition to Saint Paul do hereby certify that we have caused the same to be laid out surveyed and subdivided as indicated on this plat to the end that the same may be recorded as the law directs and we do hereby give and dedicate to the public and for public use the Street in said Addition for the purposes designated on this plat.

In testimony whereof we have hereunto set our hands and seals the Sixteenth day of July 1880
in presence of *Daniel D. Merrill* *Alice K. Merrill*

Ed. Manuzy }
Ed. Manuzy }

State of Minnesota } ss.
County of Ramsey }
Be it known that on this sixteenth day of July A.D. 1880 personally appeared before me Daniel D. Merrill and Alice K. Merrill his wife to me well known to be the identical persons described in and who executed the foregoing certificate and they severally acknowledged that they executed the same freely and for uses and purposes set forth.

Ed. Manuzy
Notary Public
Ramsey Co.
Minn.

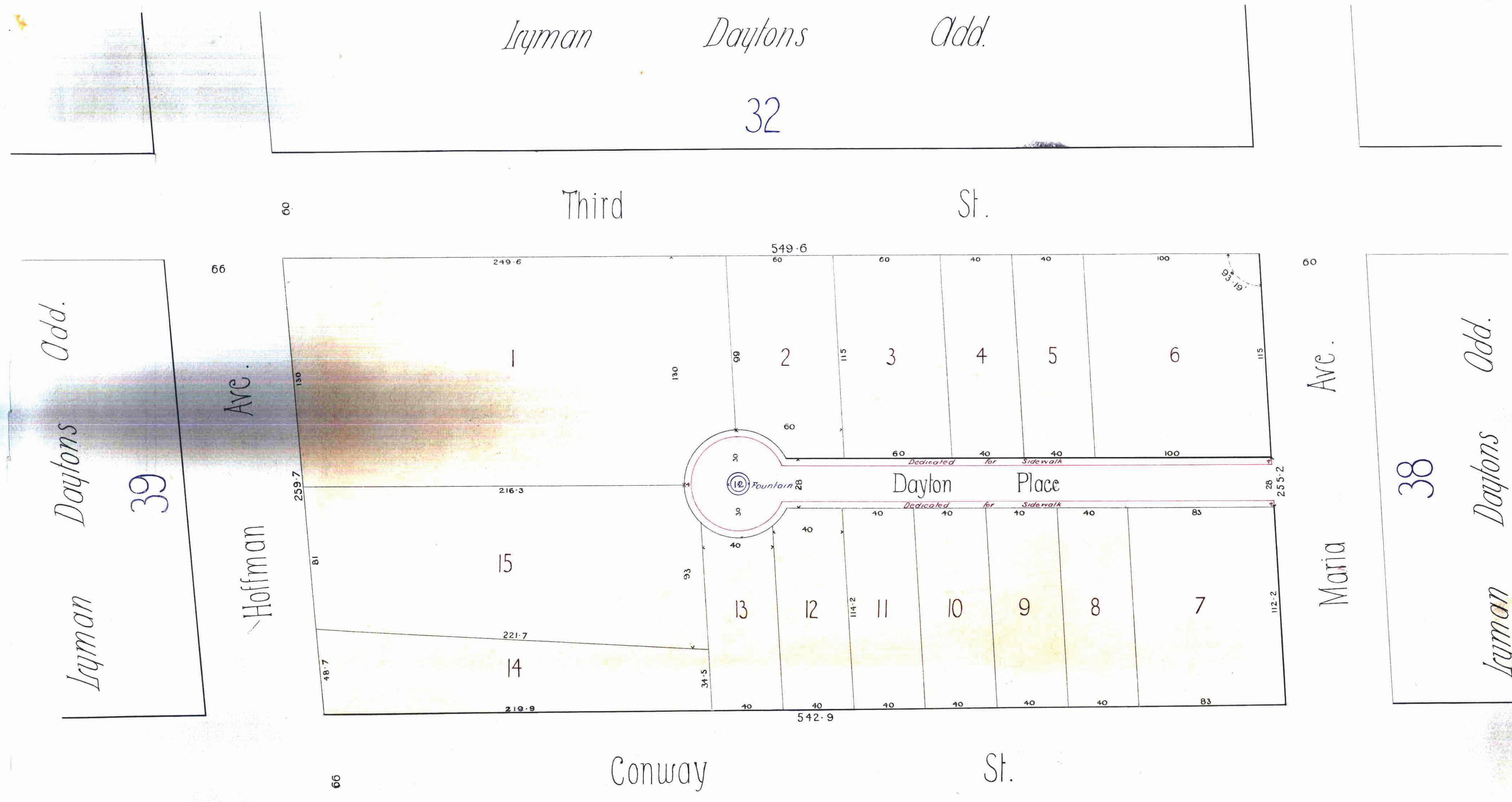
This plat is the subdivision of a block before laid out, and I recommend that it be accepted

J. Sewall City Engineer
July 20th 1880

City Clerk Office
Miss Anna Miller
July 21st 1880
I, the undersigned City Clerk of the City of Saint Paul do hereby certify that Dayton Place Addition to Saint Paul as represented on this plat was accepted by the Common Council of this City, at their meeting held July 20, A.D. 1880.

CITY TREASURER'S OFFICE
ST. PAUL, MINN.
AUG 16 1880
ASSESSMENT PAID.

Taxes Paid and transfer entered August 16 1880
Ed. Manuzy
County Auditor



STATE OF MINNESOTA
County of Ramsey
I, the undersigned, being duly qualified, do hereby certify that the within plat was filed in my office on the 16th day of August A. D. 1880 at 2 o'clock P. M. and is a correct copy of the original of the same as recorded in my office.

Otto Dieder
Recorder of Deeds
J. K. K.
Deputy

State of Minnesota } ss.
County of Ramsey }
I hereby certify that this is a correct plat of Dayton Place Addition to Saint Paul as surveyed by me in the month of July 1880.

H. H. Fuller Surveyor

45
Layman Dayton's Add.

38
Matia Dayton's Add.

39
Hoffman Ave.

32
Layman Dayton's Add.