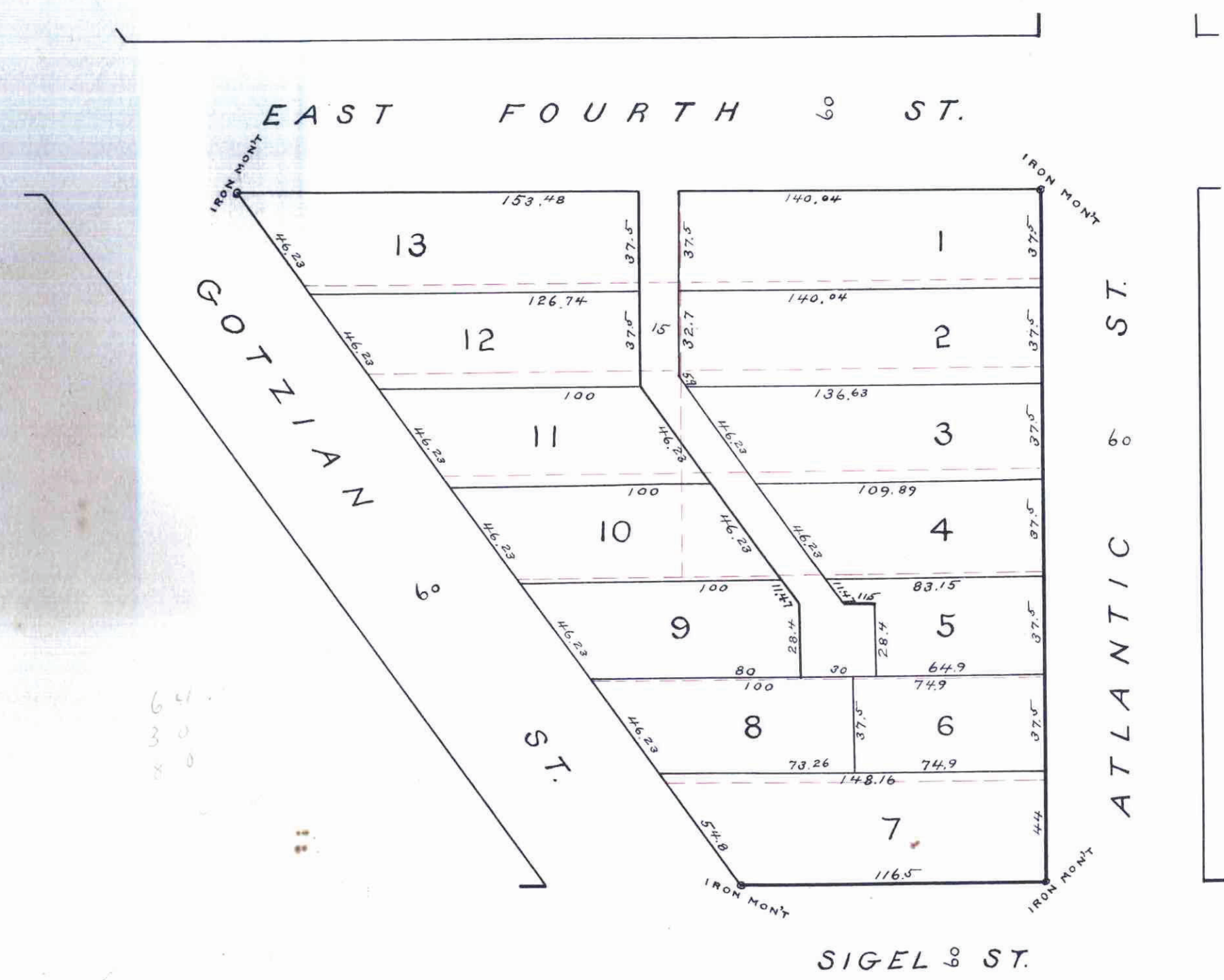


# Murphy's Rearrangement of Block 20 of A. Gotzian's Rearrangement of Sigel's Addition to St. Paul.

Surveyed August 1887. by Louis DeW. Washburn.



Scale - 50 Feet to 1 Inch.

Taxes Paid and Transfer Entered  
OCT 22 1887  
M. F. KAIN, County Auditor.  
Per *Harrison* Deputy

OFFICE OF  
COUNTY TREASURER,  
ST. PAUL, MINN.  
OCT 8 1887  
1886 TAX PAID.  
F. A. BENZ, Co. Treas.

This plat document is an UNOFFICIAL copy of a Subdivision Plat or Registered Land Survey and is made available for information purposes only.  
To obtain an official copy please contact the Ramsey County Recorder's Office.



STATE OF MINNESOTA, ss. #30980  
County of Ramsey.  
Office of the Register of Deeds.  
This is to certify that the within instrument was filed for Record in this Office, at St. Paul, on the 11th day of Oct. 1887, A. D. 1887, at 10 o'clock A. M., and that the same was duly recorded in Book 19, of 1887, page 111.  
By: *[Signature]*  
Register of Deeds.

This is to certify that Richard Leffmann (unmarried), owner and proprietor of the following described tract of land in Ramsey County Minnesota, to wit; Block 20 of A. Gotzian's Rearrangement of Sigel's Addition to St. Paul, according to the recorded plat thereof on file in the office of the Register of Deeds in and for said County of Ramsey, has caused the same to be surveyed and platted and hereafter known as Murphy's Rearrangement of Block 20 of A. Gotzian's Rearrangement of Sigel's Addition to St. Paul, as shown on this map, and hereby dedicates to the public and for the public use forever the alley as herein indicated.

Witness my hand and seal this 8th day of October A. D. 1887.  
In presence of James Lindner Joseph Bergfeld Richard Leffmann SEAD

State of Minnesota } ss.  
County of Ramsey } On this 8th day of October A. D. 1887, personally appeared before me the undersigned, Richard Leffmann (unmarried), to me well known, and he acknowledged that he executed the foregoing certificate for the uses and purposes therein expressed.

Joseph Bergfeld Notary Public,  
Ramsey County, Minnesota.

I hereby certify to having surveyed and platted the property as described on this map as "Murphy's Rearrangement of Block 20 of A. Gotzian's Rearrangement of Sigel's Addition to St. Paul", and have placed an iron monument at each block corner, as shown on this map, and the same is correct.  
Louis DeW. Washburn  
Surveyor.

State of Minnesota } ss.  
County of Hennepin } On this 22nd day of September A. D. 1887, personally appeared before me the undersigned, Louis DeW. Washburn, to me well known, and he acknowledged that he executed the foregoing certificate as his own free act and deed.

Donald Harvey  
Notary Public,  
Hennepin County, Minnesota.

CITY TREASURER'S OFFICE  
ST. PAUL, MINN.  
OCT 21 1887  
TAXES PAID

Accepted and approved this 8th day of October A. D. 1887.  
F. P. Leffmann } Plat Commission  
Ed. Starkey }  
L. W. Russell

I hereby recommend the acceptance of the within plat by the common council.  
\_\_\_\_\_  
City Engineer.

Accepted by the common council of the city of St. Paul on the 18th day of Oct 1887.  
Quatman  
City Clerk.  
Henry Deputis