

# DAVERN'S BURREN

## ADDITION.

TO ST. PAUL, MINN.

SCALE 1 INCH = 100 FEET.

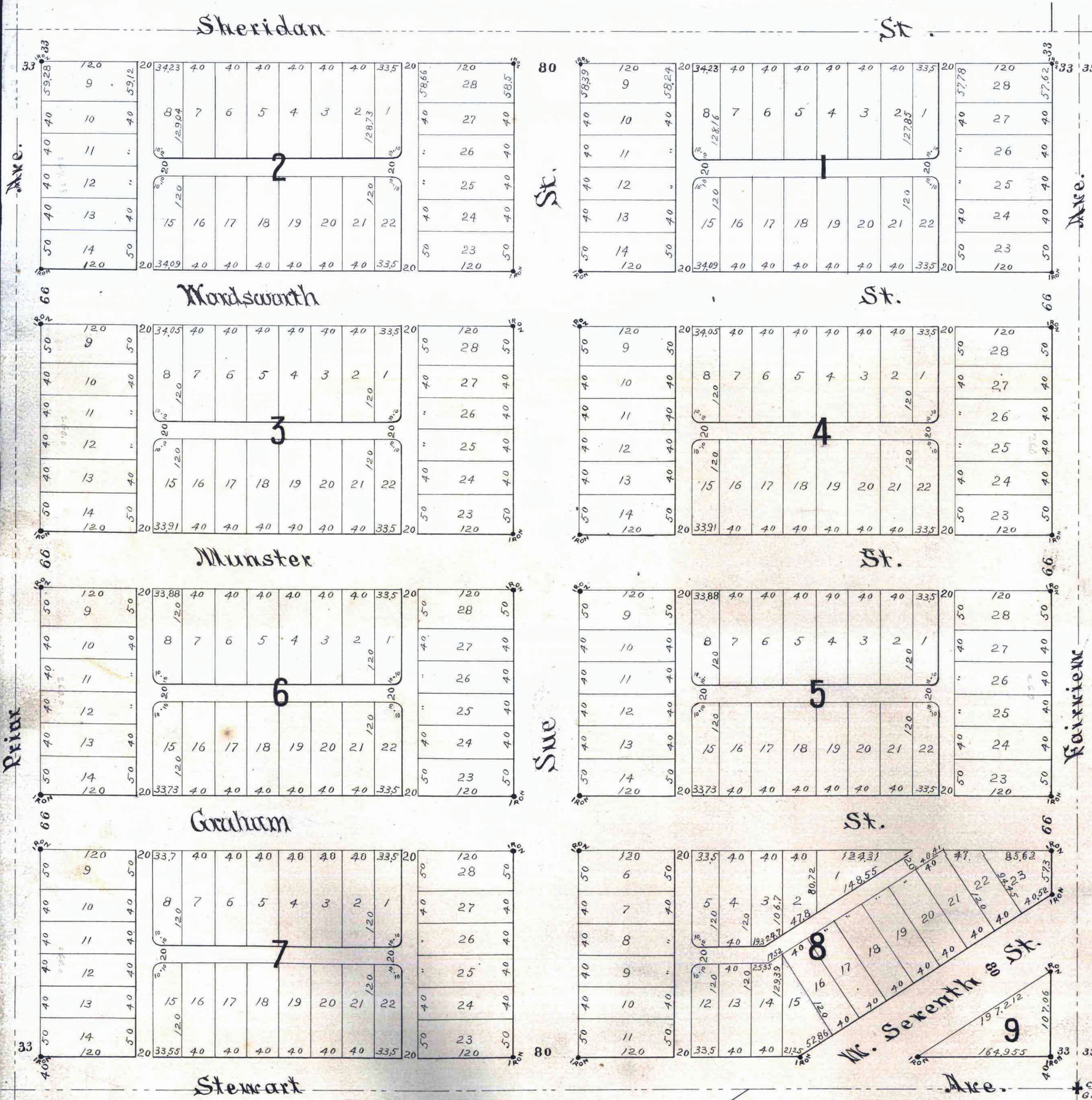
SURVEYED BY D.L.CURTICE.

147605  
 STATE OF MINNESOTA, ss.  
 County of Ramsey,  
 Office of the Register of Deeds.  
 This is to certify that the within instrument was filed for record in this office at St. Paul on the 20th day of October A.D. 1891 at 2 o'clock P.M. and that the same was duly recorded in Book 147605 of Page 147605.  
 Mark Aas  
 Register of Deeds.  
 Deputy.

This plat document is an UNOFFICIAL copy of a Subdivision Plat or Registered Land Survey and is made available for information purposes only.



To obtain an official copy please contact the Ramsey County Recorder's Office.



St. Paul Minn Sep 30th 1891.  
 I hereby certify to having surveyed and platted the property as described on this map as DAVERN'S BURREN Addition To St. Paul Minn. and have placed iron monuments at the corners of each and every Block as shown on this map, and the same is correct.  
 D. L. Curtice.  
 Surveyor.

State of Minnesota } ss. On this 20 day of October A.D. 1891 before me the undersigned personally appeared  
 County of Ramsey } ed D.L. Curtice to me well known and acknowledged that he executed the foregoing certificate as his own free act and deed.

Hermann W. Phillips,  
 Notary Public  
 Ramsey County, Minnesota

This is to certify that we, William Davern and Catharine Davern his wife are the owners of the SE 1/4 of the NW 1/4 of Section 21 Town 23 N. Range 23 W. and have caused the same to be surveyed and platted, and hereafter known as DAVERN'S BURREN Addition To St. Paul Minn. as shown by this plat and hereby dedicate to the public and for the public use forever, all the streets, avenues and alleys as here on indicated.

Witness our hands and seats this 20 day of October A.D. 1891.  
 In presence of  
 David L. Curtice }  
 Hermann W. Phillips }

Wm Davern  
 Catharine Davern

State of Minnesota } ss. On this 20 day of October A.D. 1891 before me the undersigned personally  
 County of Ramsey } appeared William Davern and Catharine Davern his wife, to me well known and acknowledged that they executed the foregoing instrument as their own free act and deed.

Hermann W. Phillips,  
 Notary Public  
 Ramsey County, Minnesota

Accepted and approved this 20th day of October A.D. 1891.

J. A. L... } PLAT  
 W. C. B... } Commissioners.  
 W. J. S... }  
 Geo. A. M... } City Engineer.

Accepted by the Common Council of the City of St. Paul, on the 27th day of Oct. 1891.

J. T. Peterson  
 Assistant City Clerk.

Office of County Treasurer,  
 ST. PAUL, MINN.  
 NOV 4 1891  
 1890 TAX PAID.  
 A. N. HANSON, County Treasurer.

CITY TREASURER'S OFFICE  
 ST. PAUL, MINN.  
 NOV 4 1891  
 ASSESSMENTS PAID

Taxes Paid and Transfer Entered,  
 NOV 4 1891  
 M. F. KELLY, County Auditor,  
 Per [Signature]