

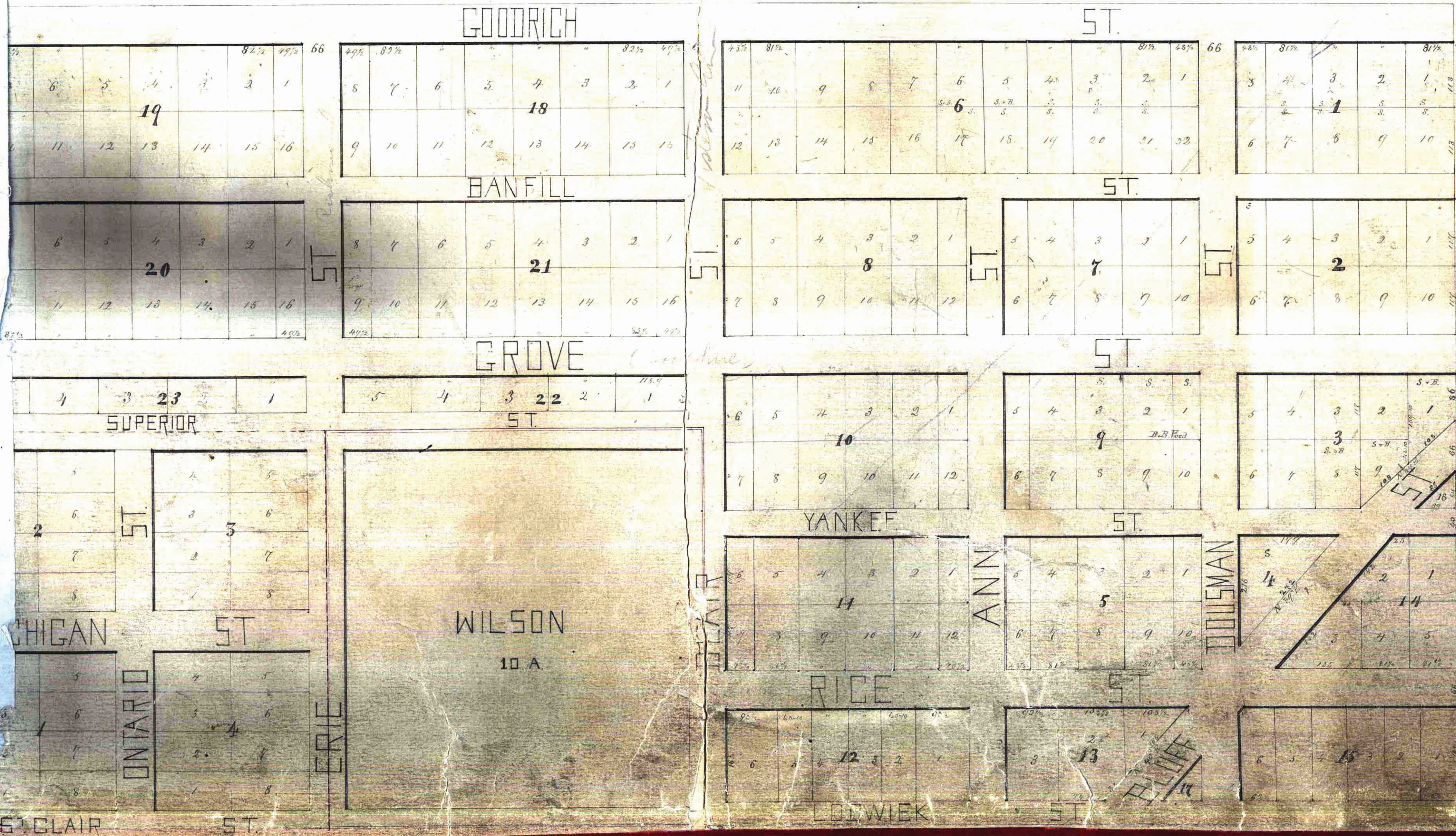
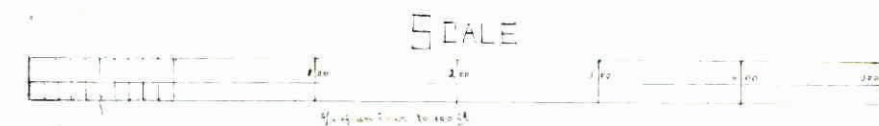
# WINSLOW'S

# ADDITION TO SAINT PAUL

This plat document is an UNOFFICIAL copy of a Subdivision Plat or Registered Land Survey and is made available for information purposes only.



To obtain an official copy please contact the Ramsey County Recorder's Office.



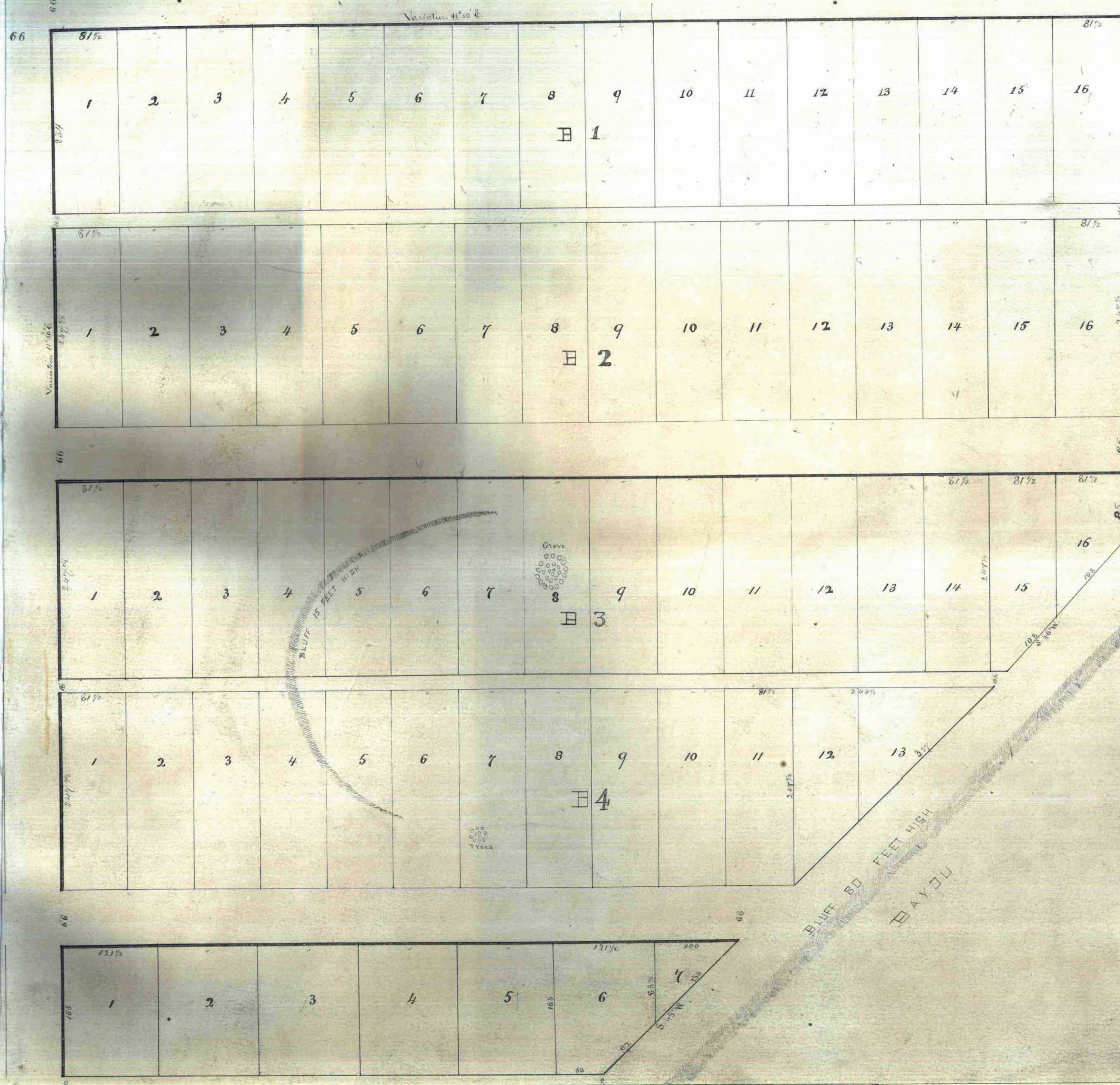
County of Ramsey }  
 Be it known that }  
 on the 20th day of }  
 October A.D. 1881 }  
 the undersigned hereon came James }  
 M. Winslow, proprietor of }  
 to Saint Paul, according to the within plat, }  
 he acknowledged that he had caused the same to }  
 be surveyed, and that he gave the streets as laid down }  
 on said plat for public use forever - as he }  
 act and deed, and to end that }  
 record, according to the provisions of }  
 case made and provided. }  
 Benjamin W. Dunsen }  
 Notary Public.

Office of Register of Deeds }  
 Ramsey County, Minn. }  
 I do hereby certify }  
 that the within plat of M. Winslow's Addition }  
 to Saint Paul, was filed in this office for record on }  
 the 20th day of October A.D. 1881, at 12 o'clock }  
 P. M. }  
 S. L. Day }  
 Register of Deeds }  
 By P. W. Dunsen }  
 Deputy

State of Minnesota }  
 County of Ramsey }  
 Office of Register of Deeds }  
 I, Theodore }  
 Sander, a Register of Deeds within and for }  
 said county of Ramsey, do hereby certify that }  
 the foregoing plat of Winslow's Addition to }  
 Saint Paul, is a true and correct copy of a }  
 plat of said addition recorded in this office }  
 on the 20th day of October A.D. 1881, at }  
 12 o'clock P. M. }  
 Theodore Sander }  
 Register of Deeds



# WINSLOW'S 10<sup>th</sup>



ADDITION

TO

SAINT PAUL

Situate on the southeast quarter of the southeast quarter of section No. one T. 23 N. Range 23 W. 4th. 5th. meridian.

This plat document is an UNOFFICIAL copy of a Subdivision Plat or Registered Land Survey and is made available for information purposes only. To obtain an official copy please contact the Ramsey County Recorder's Office.



I do hereby certify that the above plat of Winslow's Addition to the town of Saint Paul was laid off by me for town purposes and I do hereby give for public use the streets and alleys as designated thereon.  
James W. Winslow

Received for record July 25th A. D. 1851. at 8 o'clock A. M.

Secretary of Minnesota }  
County of Ramsey }  
I have personally appeared before the undersigned a Notary Public in and for said county James W. Winslow the proprietor of Winslow's Addition to the town of Saint Paul and he acknowledged that he had the same laid off and plotted for the uses and purposes above set forth freely and voluntarily.  
Saint Paul July 25th 1851  
Benj. W. Brunson  
Notary Public

State of Minnesota }  
County of Ramsey }  
Office of Register of Deeds }  
I, Theodore Sander, Register of Deeds, within and for said county of Ramsey, do hereby certify that the foregoing plat of Winslow's Addition to Saint Paul is a true and correct copy of a plat of said addition recorded in this office in book 3 of town plats on page 16. Witness my hand and official seal this 28<sup>th</sup> day of December 1851.  
Theodore Sander  
Register of Deeds