

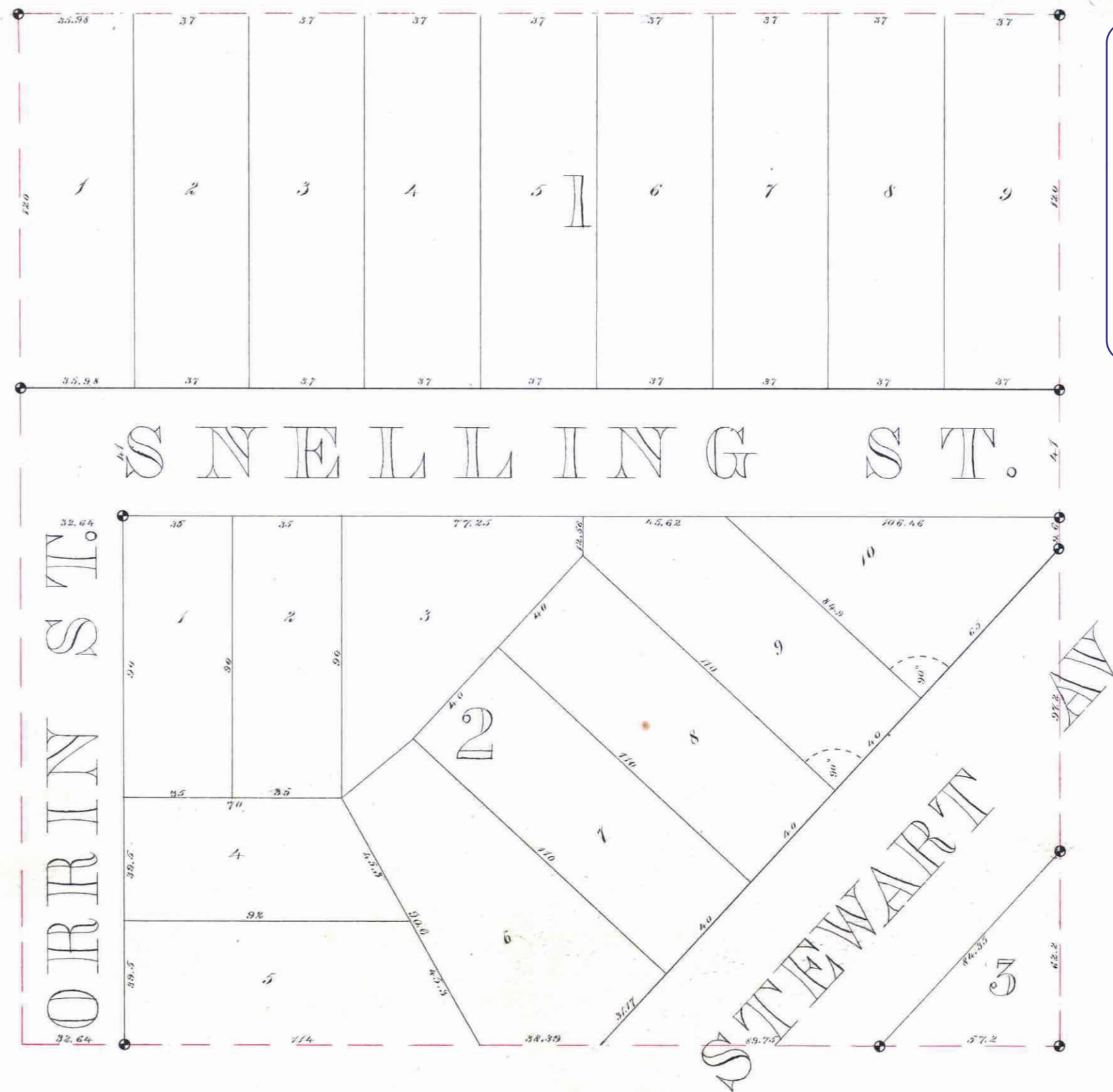
H. W. TERRY'S ADDITION

To the
CITY OF ST. PAUL

Scale 1 Inch = 40 ft.

Surveyed and drawn by
ELMER MORRISON

• Iron monuments



STATE OF MINNESOTA, ss.
County of Ramsey,
Office of the Register of Deeds.
This is to certify that the within instrument was filed for Record in this Office, at St. Paul, on the 13th day of December, A. D. 1885, at 10 o'clock A. M., and that the same was duly recorded in Book 3 of Plats pages 23.
By R. C. Wiley Register of Deeds.
Deputy.

23. **23.**

This plat document is an UNOFFICIAL copy of a Subdivision Plat or Registered Land Survey and is made available for information purposes only.
To obtain an official copy please contact the Ramsey County Recorder's Office.

This is to certify that Harriet W. Terry, proprietor of the tract of land described as follows:—beginning at a point five (5) chains North of the S. E. corner of the West half of the S. E. Quarter of Section No. 11, in Township 25 N., Range 23 W.; thence North five (5) chains; thence West five (5) chains and three (3) links; thence South five (5) chains; thence East five (5) chains and three (3) links to the place of beginning; has caused the same to be surveyed and platted, and hereafter known as "H. W. Terry's Addition" to the City of St. Paul, as shown by this plat; and hereby dedicates to the public, and for the public use forever, all the streets and avenues as herein indicated.
Witness my hand and seal this 16th day of October, A. D. 1885.

In presence of
Frederick Terry
J. R. Jenks }
Harriet W. Terry Seal

State of Minnesota ss.
County of Ramsey }
On this 16th day of October, A. D. 1885, personally appeared before me, the undersigned, Harriet W. Terry, to me well known, and acknowledged that she executed the foregoing certificate for the uses and purposes therein expressed.
J. R. Jenks
Notary Public
Ramsey County, Minn.

We hereby certify to having surveyed and platted the property as described on this map as "H. W. Terry's Addition" to the City of St. Paul, and have placed iron monuments at the corners of each and every block as shown on this map, and the same is correct.
Elmer Morrison
Civil Engineer.

State of Minnesota ss.
County of Ramsey }
On this 25th day of June, A. D. 1885, personally came before me, the undersigned, Elmer Morrison, to me well known to be a member of the firm of Elmer and Morrison, Civil Engineers, and acknowledged that he executed the foregoing certificate as his own free act and deed.
Edwin S. Jorgensen
Notary Public
Ramsey County, Minn.

We hereby certify that this plat or map is a true and correct copy of an original plat or map of "H. W. Terry's Addition" to the City of St. Paul this day accepted and approved by this Commission.
Dated Oct. 19th 1885.
J. P. Johnson
James Starkey } Plat Commission.

I hereby recommend the acceptance of the within plat by the Common Council.
St. Paul 1885.
L. W. Randall
City Engineer.

Accepted by the Common Council of the City of St. Paul on the 17th day of Nov. 1885.
W. M. Rogers
City Clerk.

St. Paul, Dec 16 1885
Assessments for local improvements paid.
George B. Coe
City Treasurer
Per Archel St. Paul

St. Paul Dec 18 1885
Taxes paid, and transfer entered
James D. Orrin
County Auditor
Ramsey County Minn.
Dean