

139220

LAUER'S SUBDIVISION.

ST. PAUL, MINN.

SCALE 1 INCH = 30 FEET.

SURVEYED BY D.L.CURTICE.

139220

STATE OF MINNESOTA, ss.
County of Ramsey,
OFFICE OF THE REGISTER OF DEEDS.
This is to certify that the within
instrument was filed for Record
in this office, at St. Paul, on the
17 day of June A. D.
1891, at 10 o'clock A. M., and
that the same was duly recorded
in Book 16, 507 from Plate
pages 47, 48.

Chas. A. Ad.
Register of Deeds.
By _____
Deputy.

I hereby certify to having surveyed and platted the property as described on this map as LAUER'S SUBDIVISION, ST. PAUL, MINN. and have placed iron monuments at the corners of each and every block as shown on this map, and the same is correct.

D. L. Curtice,
Surveyor.

State of Minnesota } ss. On this 28th day of May A. D. 1891, before me the undersigned personally appeared
County of Ramsey } *D. L. Curtice* to me well known, and acknowledged that he executed the foregoing
certificate as his own free act and deed.

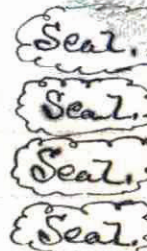
Thos. E. Parker
Notary Public

This is to certify that we - Charles Lauer and Margaret Lauer his wife, Henry Lauer and Rosa M. Lauer his wife are the owners of the following described property to wit: Commencing at the southwest corner of the SE 1/4 of the SE 1/4 of the SW 1/4 of Section 1, Town 28 North, Range 23 West; Thence east along the south line of said 1/4 1/4 1/4 section 183.0 feet; Thence north parallel to the west line of said 1/4 1/4 1/4 section 330.0 feet; Thence west parallel to first named line 183.0 feet to the west line of said 1/4 1/4 1/4 section 330.0 feet to the point of beginning, and have caused the same to be surveyed and platted, and hereafter known as LAUER'S SUBDIVISION, ST. PAUL, MINN. as shown by this plat and hereby dedicate to the public, and for the public use forever, all the streets, as hereon indicated.

Witness our hands and seals this 28th day of May A. D. 1891.

In presence of
Thos. E. Parker
Geo. H. Hartung

Charles Lauer
Margaret Lauer
Henry Lauer
Rosa Lauer



State of Minnesota } ss. On this 28th day of May A. D. 1891, before me the undersigned personally
County of Ramsey } appeared Charles Lauer and Margaret Lauer his wife, Henry Lauer and
Rosa M. Lauer his wife, to me well known, and acknowledged that they ex-
ecuted the foregoing instrument as their own free act and deed.

Thos. E. Parker
Notary Public

Accepted and approved this 2nd day of June A. D. 1891.

Geo. A. Loo
William E. Burton } PLAT
W. H. Dennis } Commissioners.
L. W. Rendell City Engrs

We hereby certify that this plat or map is a true and correct copy of an original plat or map of LAUER'S SUBDIVISION ST. PAUL, MINN. this day accepted and approved by this Commission.

CITY TREASURER'S OFFICE
ST. PAUL, MINN.
JUN 17 1891
ASSESSMENTS PAID
George F. ...

JUN 17 1891
M. F. ... County Auditor,
W. H. Dennis

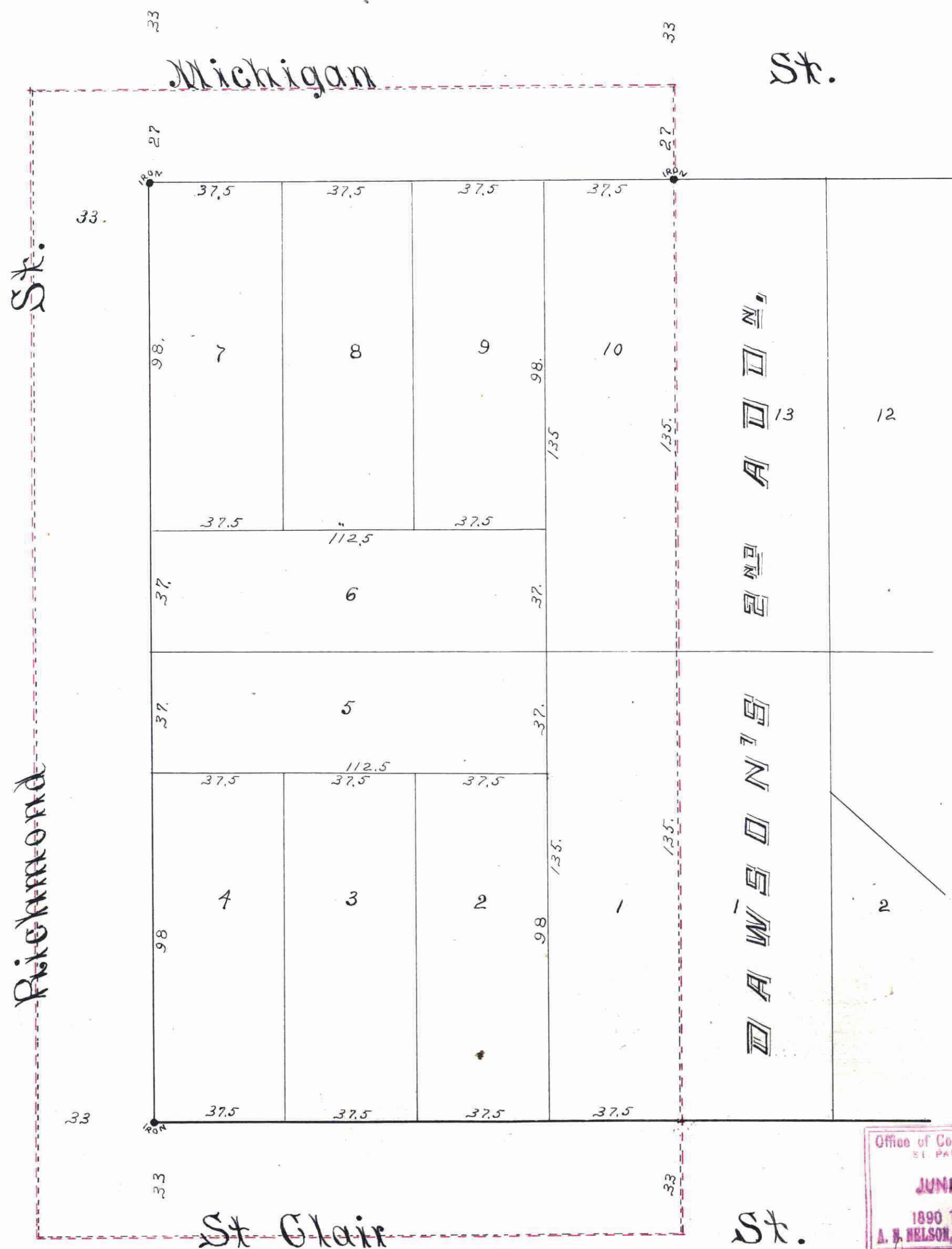
W. H. Dennis } PLAT
L. W. Rendell } Commissioners.
City Engrs

Accepted by the Common Council of the City of St. Paul, on the 9th day of June 1891.

W. H. Dennis
City Clerk.

Office of County Treasurer,
ST. PAUL, MINN.
JUN 27 1891
1890 TAX PAID.
A. B. NELSON, County Treasurer.

Grade



This plat document is an UNOFFICIAL copy of a Subdivision Plat or Registered Land Survey and is made available for information purposes only.

To obtain an official copy please contact the Ramsey County Recorder's Office.

