

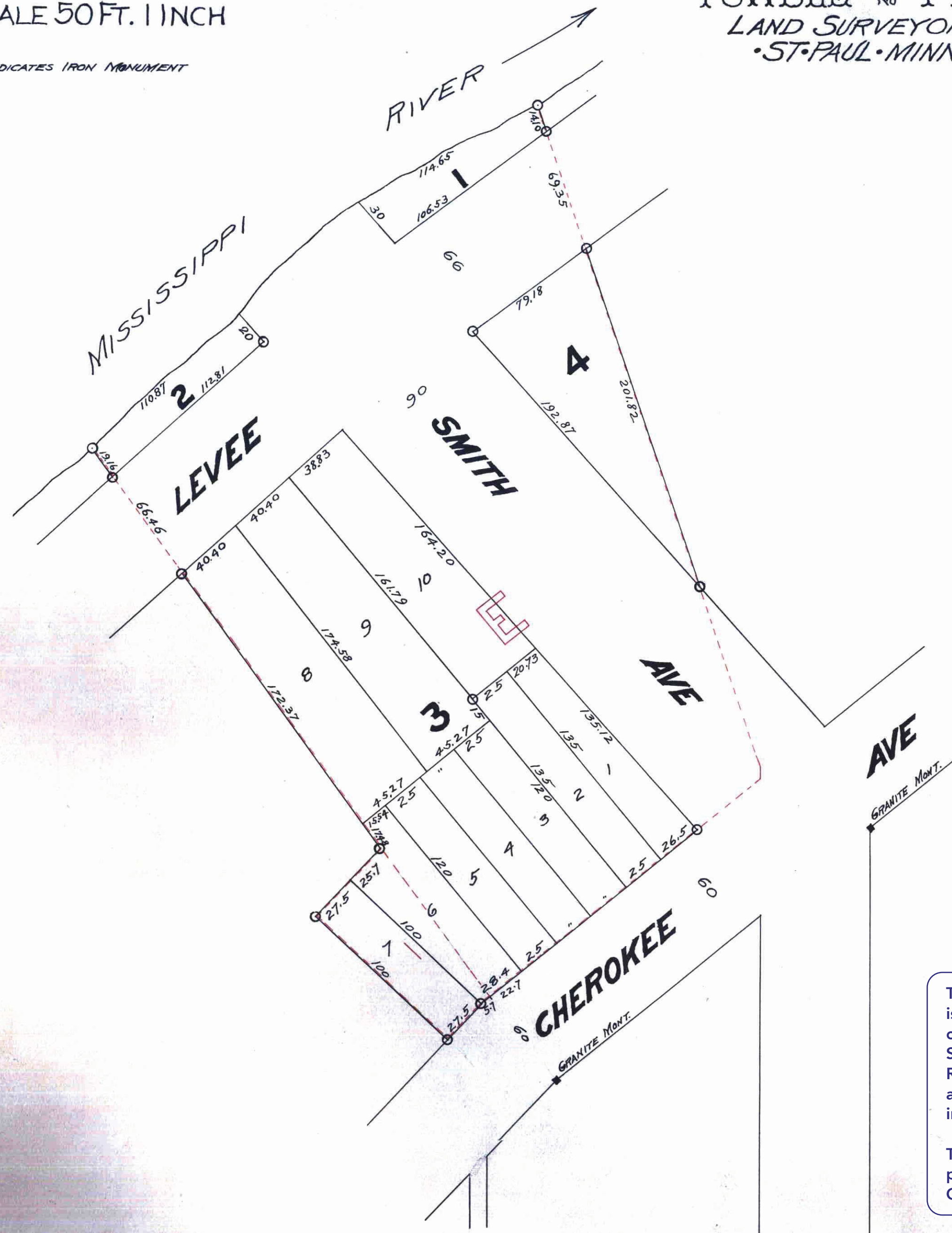
136576

# STAPLES' FIRST ADDITION TO ST. PAUL

SCALE 50 FT. = 1 INCH

○ INDICATES IRON MONUMENT

SURVEYED BY  
**FOWBLE & FITZ,**  
LAND SURVEYORS,  
ST. PAUL, MINN.



We hereby certify, to having surveyed and platted the property as described on this map as STAPLES' FIRST ADDITION TO ST. PAUL and have placed iron monuments at the corners of each and every block as shown on this map and the same is correct.

J. Milton Fowble

J. Henry Fitz

State of Minnesota }  
County of Ramsey } On this 11<sup>th</sup> day of April, A.D. 1891 before me, personally appeared J. Milton Fowble and J. Henry Fitz to me known to be the persons described in and who executed the foregoing instrument and acknowledged that they executed the same as their free act and deed.

Edward J. Debnert  
Notary Public, Ramsey Co., Minn.

This is to certify that Samuel Cole Staples, widower, proprietor of Lot E, Palmer's Addition to West St. Paul and Lot 1 Block 2 Lauger's Fourth Add. to St. Paul has caused the same to be surveyed and platted and hereafter known as "STAPLES' FIRST ADDITION TO ST. PAUL" as shown by this plat and hereby dedicated to the public for public use forever, all the streets, avenues and levee, as herein indicated.

In presence of  
A. Wedge }  
Harry Milled. }

Samuel Cole Staples (L.S.)

State of Minnesota }  
County of Ramsey } On this 11<sup>th</sup> day of April, A.D. 1891 before me personally appeared Samuel Cole Staples, to me known to be the person described in and who executed the foregoing instrument and acknowledged that he executed the same as his free act and deed.

A. Wedge  
Notary Public, Ramsey Co., Minn.

Accepted and approved this 5<sup>th</sup> day of MAY A.D. 1891.

W. A. Emmons }  
William E. Dunton } PLAT COMMISSION

L. W. Lundgren } CITY ENGINEER

Accepted by the Common Council of the City of St. Paul on the 5<sup>th</sup> day of May 1891

Thomas Lundgren }  
CITY CLERK

Taxes Paid and Transfer Entered,  
MAY 7 1891  
M. E. KAIN, County Auditor,  
Pay *[Signature]*

This plat document is an UNOFFICIAL copy of a Subdivision Plat or Registered Land Survey and is made available for information purposes only.  
To obtain an official copy please contact the Ramsey County Recorder's Office.



CITY TREASURER'S OFFICE  
ST. PAUL, MINN.  
MAY 7 1891  
ASSESSMENT PAID  
*[Signature]*  
CITY TREASURER

Office of County Treasurer,  
ST. PAUL, MINN.  
MAY 7 1891  
1890 TAX PAID.  
A. N. NELSON, County Treasurer.

STATE OF MINNESOTA, ss.  
County of Ramsey.  
OFFICE OF THE REGISTER OF DEEDS.  
This is to certify that the within instrument was filed for Record in this office, at St. Paul, on the 7 day of May, A. D. 1891 at 4 o'clock P. M., and that the same was duly recorded in Book 15 of Town Plats pages 39 & 40.