

I hereby certify that the map below is a correct plat of my subdivision of north east quarter of Block Three (3) Leech's addition of out lots to St Paul, as surveyed and drawn by me in the month of February A.D. 1858. Wm R. Marshall Surveyor.

Witness
 Wm A. Spencer
 Notary Public

I William R. Marshall proprietor of the north east quarter of Block Three (3) Leech's addition of Out lots to Saint Paul, do hereby certify that I have caused the above subdivision of the same to be made into lots as numbered and indicated of plat and I do hereby give the alley, as platted to the public.

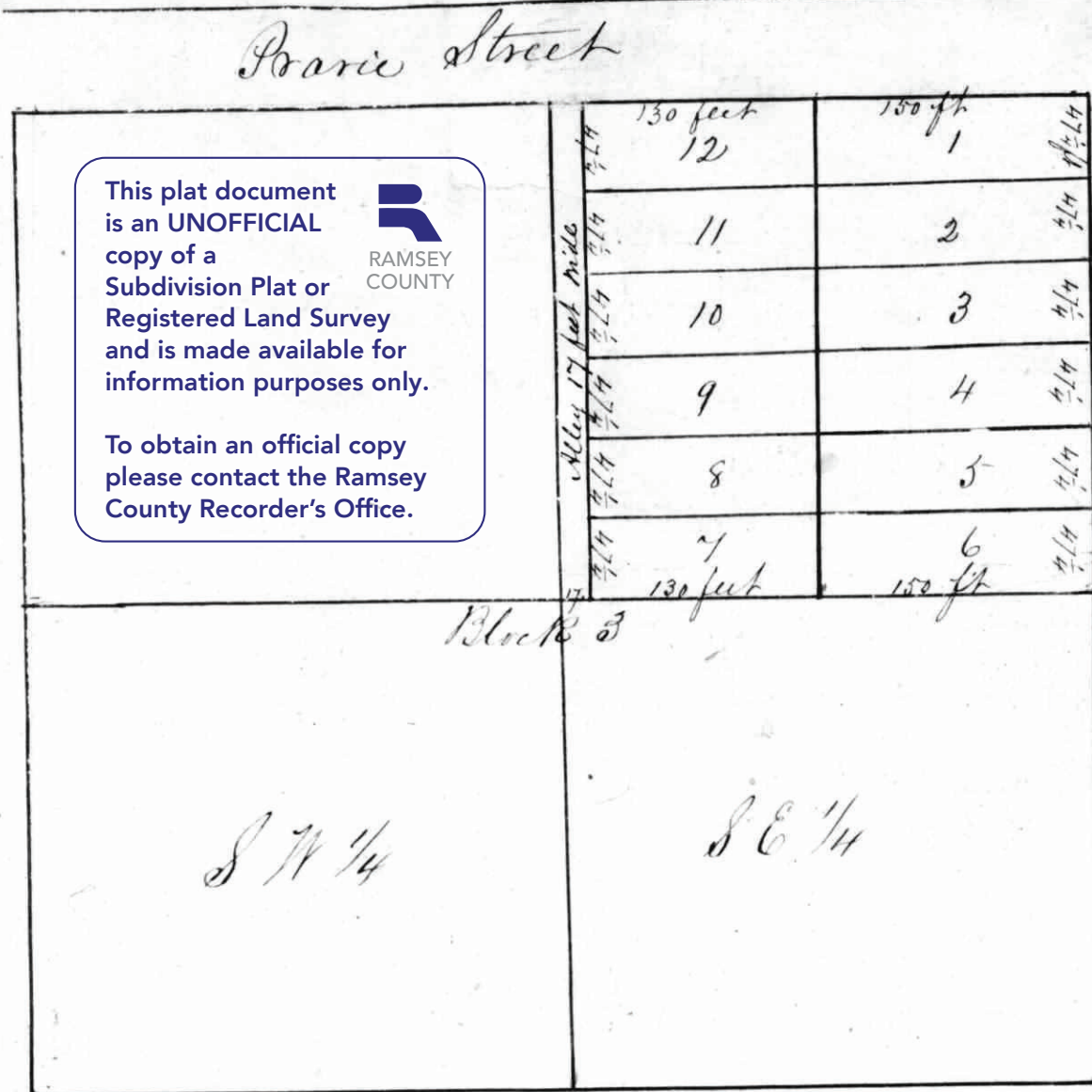
St Paul February 10th 1858
 Wm R. Marshall

Territory of Minnesota, S.S.
 County of Ramsey

Before me the undersigned a Notary Public in and for Ramsey County, personally appeared Wm R. Marshall on the 10th day of February 1858, and he acknowledged that he executed the above plat voluntarily for the uses & purposes therein expressed.

Wm A. Spencer
 Notary Public
 Minnesota

Scale 100 feet to an inch



This plat document is an UNOFFICIAL copy of a Subdivision Plat or Registered Land Survey and is made available for information purposes only.

To obtain an official copy please contact the Ramsey County Recorder's Office.

RAMSEY COUNTY

Godnick Street.

Scale 100 feet to an inch.

Wm R. Marshall's subdivision of North East quarter of Block No Three (3) of Leech's addition of Out lots.

Register of Deeds office Ramsey County Minn
 I hereby certify that the within map of Wm R. Marshall's subdivision of North East quarter of Block Three of Leech's addition of Out Lots was filed in this office for record on the 10th day of February 1858 at 2-15 o'clock P.M. and was

at Third and Jackson S

OPPOSITE THE MERCHANTS' HOTEL