

36 3/4

This plat document is an UNOFFICIAL copy of a Subdivision Plat or Registered Land Survey and is made available for information purposes only.

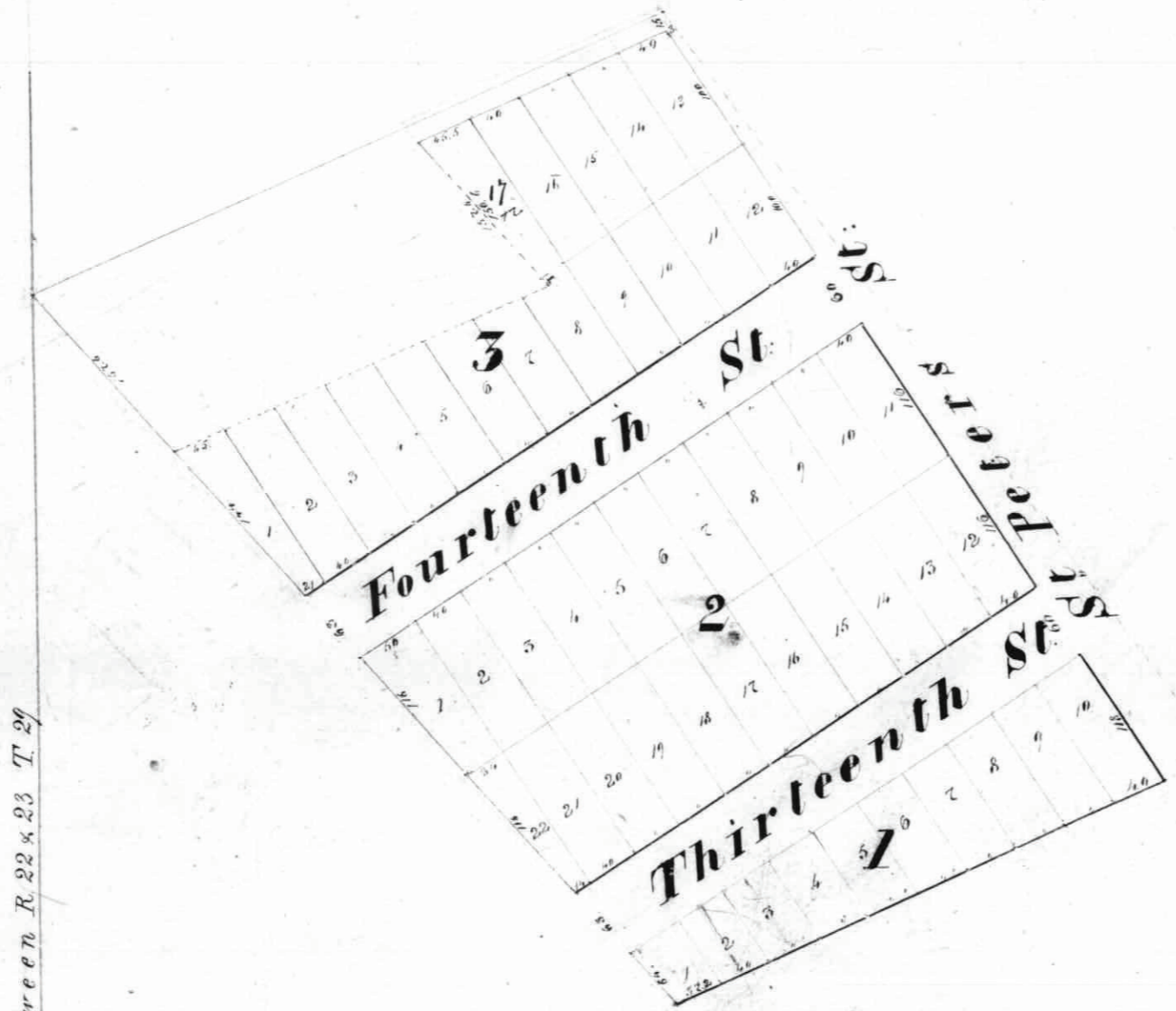
To obtain an official copy please contact the Ramsey County Recorder's Office.



Know all Men by these presents that Alexander Ramsey, proprietor and promoter of "Ramsey's addition to Saint Paul" has caused the same to be surveyed and laid out in lots and blocks, the annexed being a correct plat thereof: Witness my hand and seal this first day of November 1858

Alex. Ramsey

RAMSEY'S
Addition
to
ST PAUL



Range Line between R. 22 & 23 T. 29

Sec 36 Sec 31
Sec 1 Sec 6

State of Minnesota
County of Ramsey On this first day of November A.D. 1858 personally appeared to me the above named Alexander Ramsey to me well known to be the identical person who signed the foregoing original and acknowledged the execution of the same for the uses and purposes therein expressed.

Saml. G. Stone

Notary Public

Office of Registrar of Deeds Ramsey County Minn.
I hereby certify that within plat of "Ramsey's addition" was filed for record on the first day of November A.D. 1858 at 10 o'clock A.M.

Caroline Secuman
Registrar of Deeds

We certify that the above plat of Ramsey's Addition to St. Paul is surveyed and blocks, lots and streets are as shown and that the above is a correct plat of the same. Witness my hand and seal this 1st day of July 1858.