

Taxes paid and transferred
for taxation this 22nd day
of October A D 1869

Per Government
J. Lee Davis
Auditor

J. Bernard Michel, the Proprietor of "Michel's Subdivision of Block 14
of Stinson's Division of Section Thirty Six Town 29 Range 23 Do. Dundy City
That I have caused the same to be subdivided, laid out + surveyed in lots
and blocks as indicated by the within plat + I hereby give the streets and
alleys therein named for the use of the public. Dated St Paul, Minn
October, Minn. 1869.

In presence of
J. Williams
J. D. Davis

Bernard Michel (S.S.)

1919

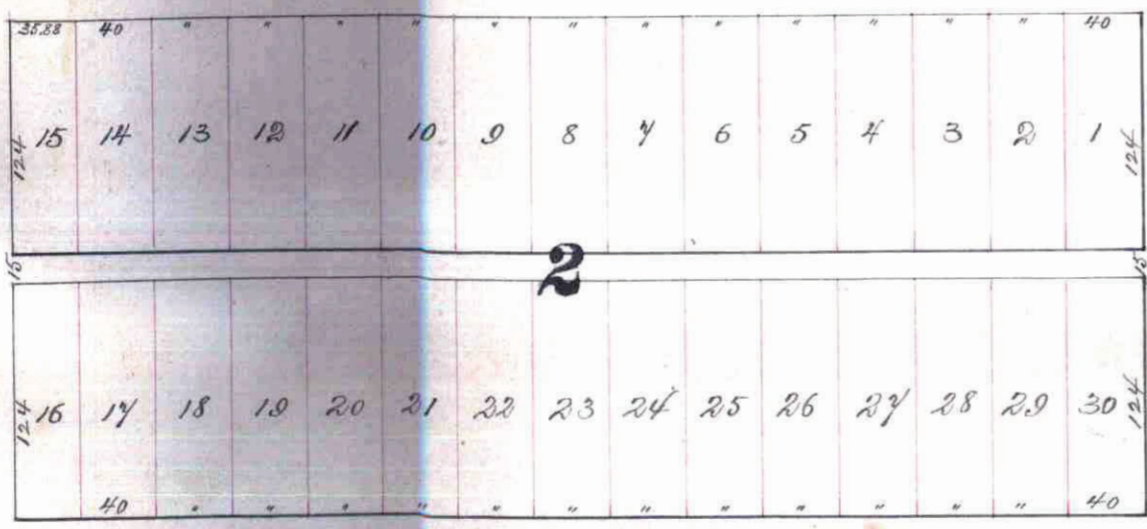
MICHEL'S SUBDIVISION

OF

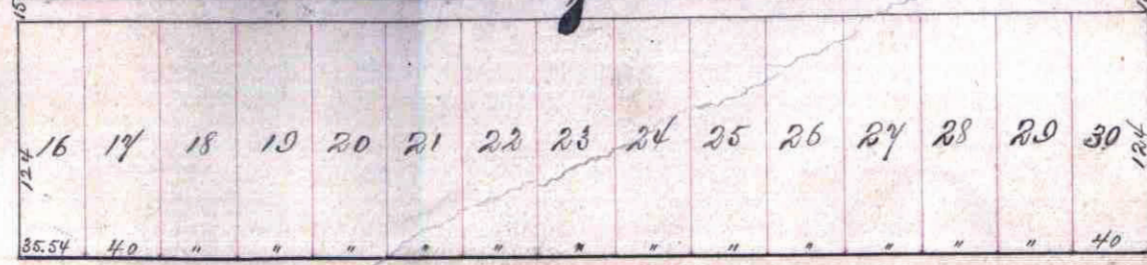
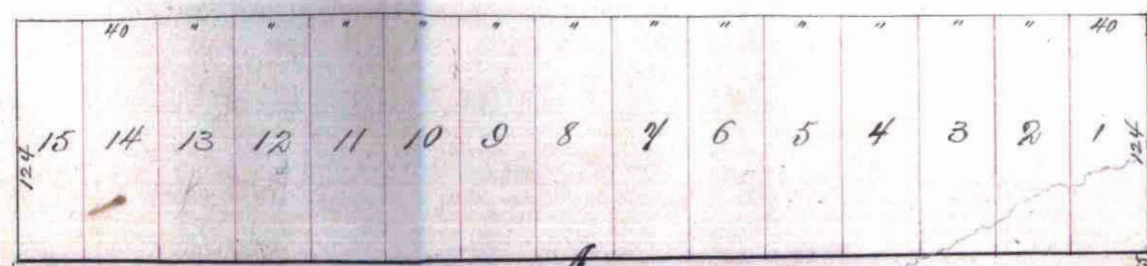
Block 14 of STINSON'S DIVISION

This plat document is an UNOFFICIAL copy of a Subdivision Plat or Registered Land Survey and is made available for information purposes only. To obtain an official copy please contact the Ramsey County Recorder's Office.

Office of Reg. of St. Paul
Minneapolis
I hereby certify that the within plat was filed in this Office for record on
the 22nd day of October A.D. 1869 at 12 M. + recorded in Book A
of Sample
Registers of Realty



66. ELLEN ST. 40



State of Minnesota
County of Ramsey
On this 22nd day of October A. D. 1869
I personally appeared Bernard Michel the
signer + sealer of the foregoing written
Certificate + acknowledged that he executed
the same freely + voluntarily for the uses
+ purposes mentioned.

I certify that Michel's subdivision of Block
14 Stinson's Division as shown by this plat
conforms with the streets and alleys of the
adjoining property
St Paul Oct 22nd 1869
D. L. Curtice
City Surveyor

We certify that this is correct Plat of Michel's
Subdivision of Block 14 Stinson's Division of
Section 36 Town 29 Range 23 in the City of
St Paul, as surveyed by us in the month of
September A.D. 1869
St Paul Oct 22nd 1869
Curtice & Kalster

I hereby certify that this
Plat was adopted by the
Common Council October 19th
1869
J. Williams
City Clerk