

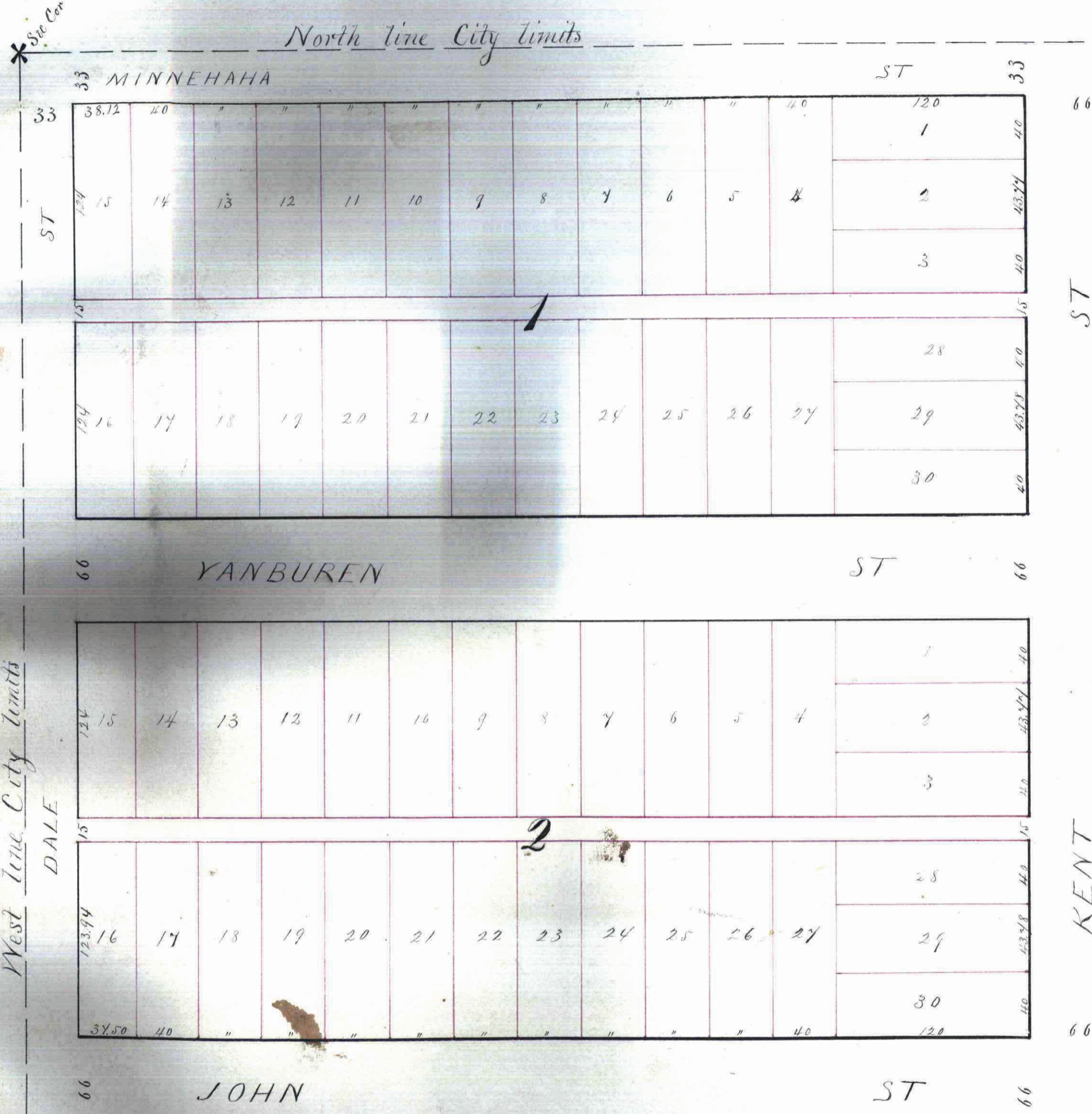
# MICHEL'S SUBDIVISION

of  
Block 4 Stinson's Division

13

This plat document is an UNOFFICIAL copy of a Subdivision Plat or Registered Land Survey and is made available for information purposes only.

To obtain an official copy please contact the Ramsey County Recorder's Office.



Certify that Michel's Subdivision of Block 4 of Stinson's Division in the City of St. Paul was adopted by the Common Council of the City of St. Paul on the 1<sup>st</sup> day of October A. D. 1871 in witness whereunto I have hereunto affixed the Official Seal of the said City this 12<sup>th</sup> day of October A. D. 1871.

W. J. Connor  
Clerk of the City of St. Paul

State of Minnesota I, the undersigned Bernard Michel, Proprietor of "Michel's County of Ramsey" Subdivision of Block 4 Stinson's Division do hereby certify that I caused the foregoing map or plat to be surveyed and plotted & do hereby give for public use the streets and alleys as designated therein. Witness my hand and seal this 12<sup>th</sup> day of October A. D. 1871.

In presence of  
J. A. Oliver  
Bernard Michel

State of Minnesota I, the undersigned Bernard Michel, Proprietor of "Michel's County of Ramsey" Subdivision of Block 4 Stinson's Division do hereby certify that I caused the foregoing map or plat to be surveyed and plotted & do hereby give for public use the streets and alleys as designated therein. Witness my hand and seal this 12<sup>th</sup> day of October A. D. 1871.

In presence of  
J. A. Oliver  
Bernard Michel

Office of Register of Deeds  
Ramsey Co. Minn.

Received for record on the 19<sup>th</sup> day of October A. D. 1871 and recorded in Book 3 of Townships on page 13.

J. A. Oliver  
Reg. of Deeds

Tax & P. Office of Ramsey Co. Auditor, St. Paul, 12 Oct 71  
C. Auditor

St. Paul Minn Oct 11<sup>th</sup> 1871

We certify that the foregoing Plat is a true representation of Michel's Subdivision of Block four (4) of Stinson's Division St. Paul Minn as surveyed by us in the months of September & October A. D. 1871

Curtis & Stetler

The Streets as shown on the above Plat conform with the Streets as laid out on the adjoining property

St. Paul Minn Oct 11<sup>th</sup> 1871  
A. S. Justice City Surveyor