

18
24

LINDEMANN'S SUBDIVISION

of Lots 9 and 10 of

Hyde Park Addition

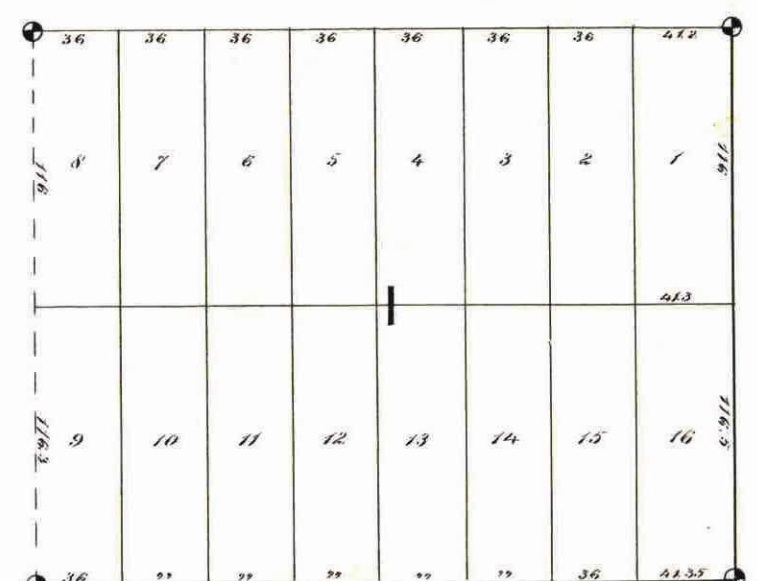
To the
CITY OF ST. PAUL

Scale 1 inch = 80 ft.

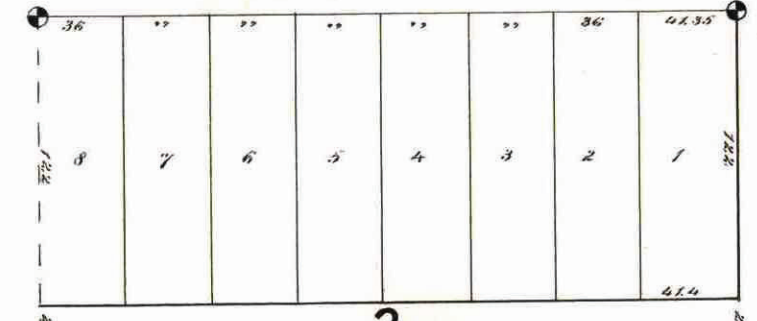
STATE OF MINNESOTA,)
County of Ramsey,)
OFFICE OF THE REGISTER OF DEEDS.
This is to certify that the within
instrument was filed for record
in this office, at St. Paul, on the
18th day of May, A. D.
1885, at 5 o'clock P. M., and
that the same was duly recorded
in Book 18 of Deeds,
pages 18 and 19.
R. C. Stahley
Register of Deeds.

This plat document is an UNOFFICIAL copy of a Subdivision Plat or Registered Land Survey and is made available for information purposes only.
To obtain an official copy please contact the Ramsey County Recorder's Office.

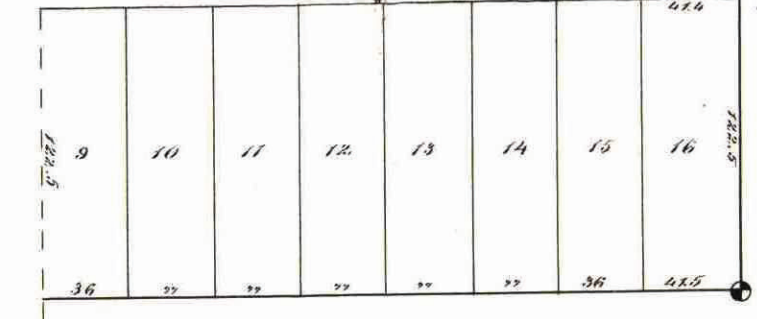
UNIVERSITY AVE.



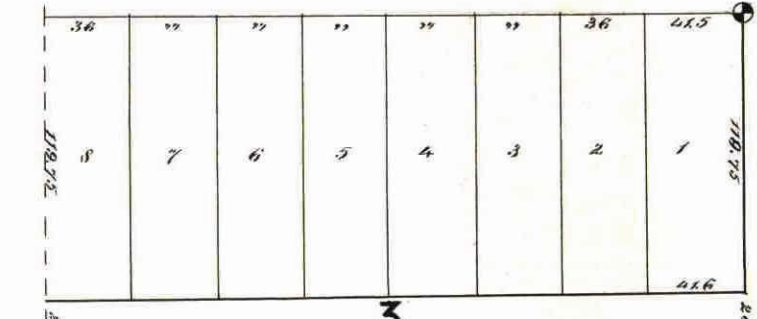
AURORA AVE.



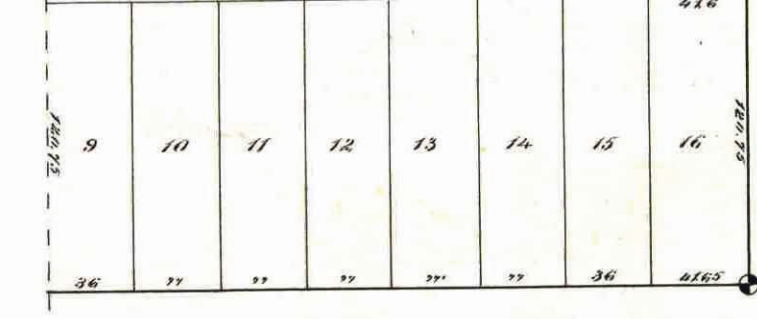
2



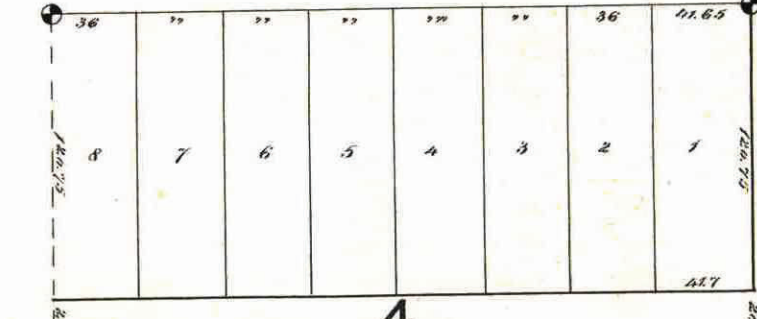
FULLER ST.



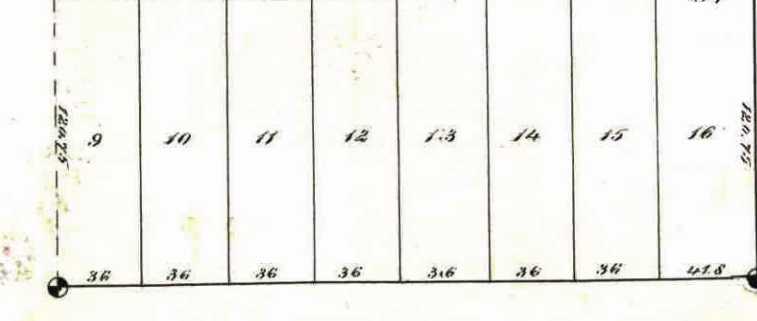
3



MARTIN ST.



4



ST. ANTHONY AVE.

OXFORD

ST.

We, W^o P. Lindemann and Rebecca Lindemann his wife, of the City of Viroqua, County of Monroe, State of Wisconsin, the undersigned owners of Lots nine (9) and ten (10) of Hyde Park Addition to the City of St. Paul, do hereby certify to having caused the same to be surveyed and platted as "Lindemann's Subdivision" of Lots 9 and 10 of Hyde Park Addition to the City of St. Paul, as herein and hereon indicated; and we do hereby give and dedicate to the public, and for the public use forever, all the streets and alleys as on this plat or map laid out and designated.

In witness whereof we have hereunto set our hands and seals this 8th day of May, A.D. 1885.
In presence of
M. C. Dargatzis
Key Lindemann
Rebecca Lindemann

We hereby certify to having surveyed and platted the property as described on this map as "Lindemann's Subdivision" of lots 9 and 10 of Hyde Park Addition to the City of St. Paul; and have placed iron monuments at the block corners, as required by law, as hereon on this map shown, and the same is correct.

Elmer & Morrison
Civil Engineers.

Auditor's Office
Ramsey County
Minn.
June 1 1885

Taxes paid.

Jas O'Brien
County Auditor.

City Treasurer's Office
St. Paul, Minn. 1885

Assessments for local improvements paid.

City Treasurer.

St. Paul Minn.
May 23 1885

Examined and approved.

J. F. Holman
Jas. Starkay
M. A. Haukly
Plat Commission.

County of Monroe
State of Wisconsin } S.S.

Be it known on the 8th day of May, A.D. 1885, personally appeared before me W^o P. Lindemann and Rebecca Lindemann his wife, to me personally known to be the same persons described in and who executed the foregoing instrument, and they acknowledge that they executed the same as their free act and deed.

Witness my hand and Notarial Seal.
C. H. Morrison
Notary Public
Monroe County
Wisconsin

County of Ramsey
State of Minnesota } S.S.

On this 22nd day of May A.D. 1885, personally appeared before me J. H. Morrison, to me known to be a member of the firm of Elmer & Morrison, Civil Engineers, who being duly sworn acknowledged having surveyed and platted the within described property as shown on this map, and having placed iron monuments at all block corners as required by law, and that the same is correct.

Witness my hand and Notarial Seal.
Henry B. Wenzell
Notary Public
Ramsey County
Minn.

City Engineer's Office
May 26th 1885

I have examined this plat and recommend that it be approved and accepted by the Common Council of St. Paul.

L. W. Rundlett
City Engineer.

I certify that "Lindemann's Subdivision" of lots 9 and 10 of Hyde Park Addition to the City of St. Paul, as exhibited on this plat, was approved and accepted by the Common Council on the 19th day of May 1885.

W. H. Hering
City Clerk

CITY TREASURER'S OFFICE
ST. PAUL, MINN.
JUN 1 1885
ASSESSMENTS PAID
Gardner
CITY TREAS.

Archib

Iron Monument.

Elmer & Morrison
Civil Engineers.