

Johnson's Subdivision

at

Lots 16 17 & 18 Block 31 Gladstone Ramsey

COUNTY MINNESOTA.

126555

I hereby certify to having surveyed and platted the property as described on this map as Johnson's Subdivision of Lots 16, 17 & 18 Block 31 Gladstone Ramsey Co., and have placed iron monuments at the corners of each and every block as shown on this map, and the same is correct.

Charles A. Forbes
Surveyor.

STATE OF MINNESOTA, } ss.
County of Ramsey,

On this 25th day

of July 1887 personally appeared before the undersigned, CHARLES A. FORBES, to the well known, and acknowledged that he executed the foregoing Certificate as his own free act and deed.

Simon Leim
Notary Public, Ramsey Co., Minn.

This is to certify that *John R. Johnson & Edgar Johnson* proprietors of the following described property Lots 16, 17 & 18 Block 31 Gladstone Ramsey Co., Minnesota have caused the same to be surveyed and platted, and hereafter known as Johnson's Subdivision of Lots 16, 17 & 18 Block 31 Gladstone Plat 2 Two Ramsey County, as shown by this plat, and hereby dedicate to the public, and for the public use of the streets, avenues, alleys, Parks and Boulevards, as herein indicated.

In presence of 25th day of July 1887
Simon Leim *John R. Johnson* *Edgar Johnson*
Charles A. Forbes *Real* *Real*

County of Ramsey } On this 25th day of July A. D. 1887, personally came before me, the undersigned, *John R. Johnson & Edgar Johnson* to me well known, and they acknowledged that they executed the foregoing Certificate for the uses and purposes therein expressed.

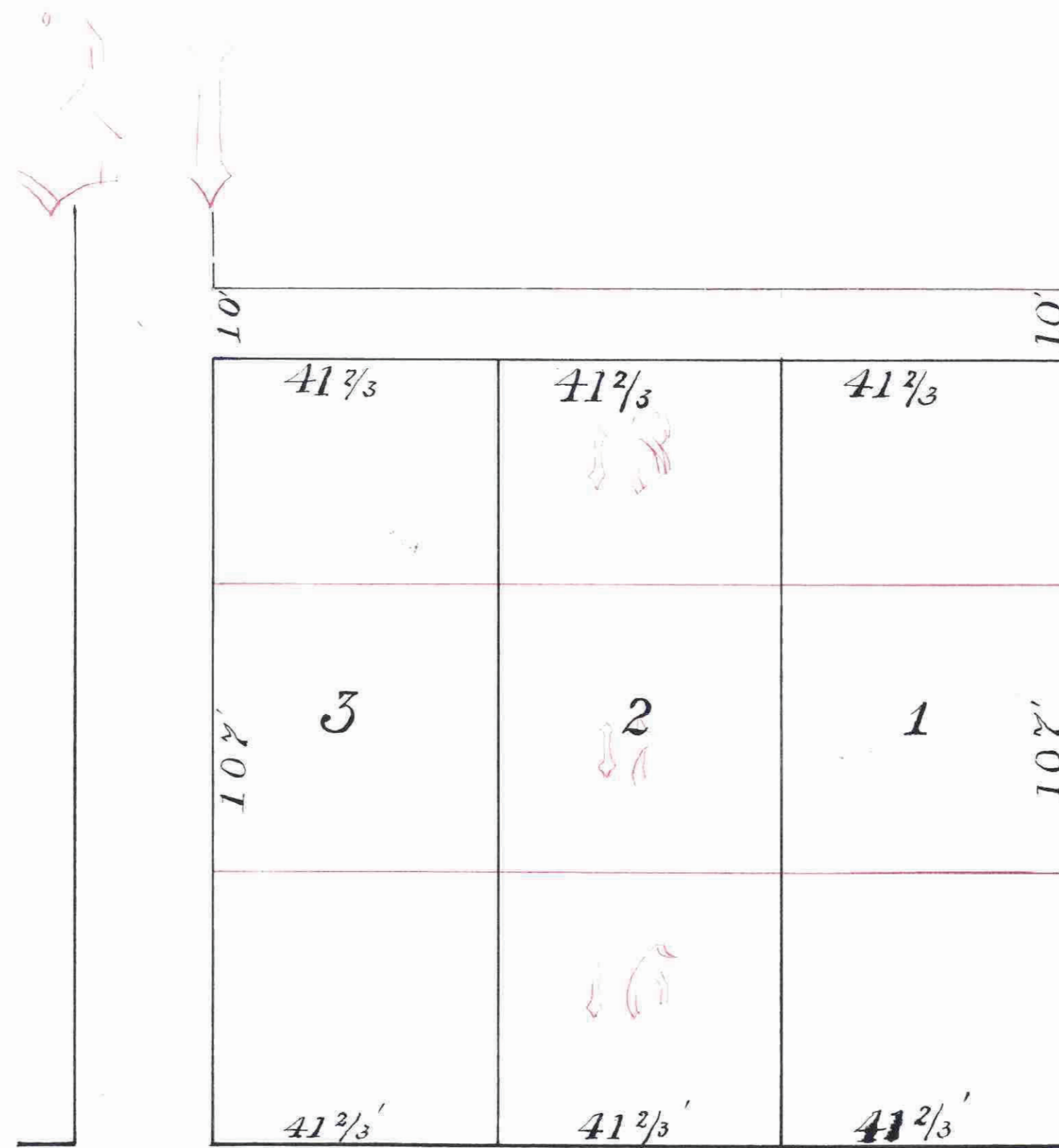
Simon Leim
Notary Public,
Ramsey County, Minn.

Accepted and approved this 17th day of August A. D. 1887

W. E. Brewster
John H. ...
John H. ...
Plat Commissioners.



Taxes Paid and Transfer Entered,
NOV 17 1890
M. F. KAIN, County Auditor,
Per *J. F. Kain*



DIETER AVE

FROST AVE

I certify that I have made all necessary surveys to determine the accuracy of the annexed plat, and find that the monuments for the guidance of future surveys, as shown on the plat, have been correctly placed, that the boundary lines of the land platted are correctly shown on the plat, and that the sizes of all fractional lots are as given on the plat.

Dated St. Paul, Nov. 8th 1890

H. E. Clark
Supt. County Surveyor
Ramsey County Minn.

This plat document is an UNOFFICIAL copy of a Subdivision Plat or Registered Land Survey and is made available for information purposes only. To obtain an official copy please contact the Ramsey County Recorder's Office.

