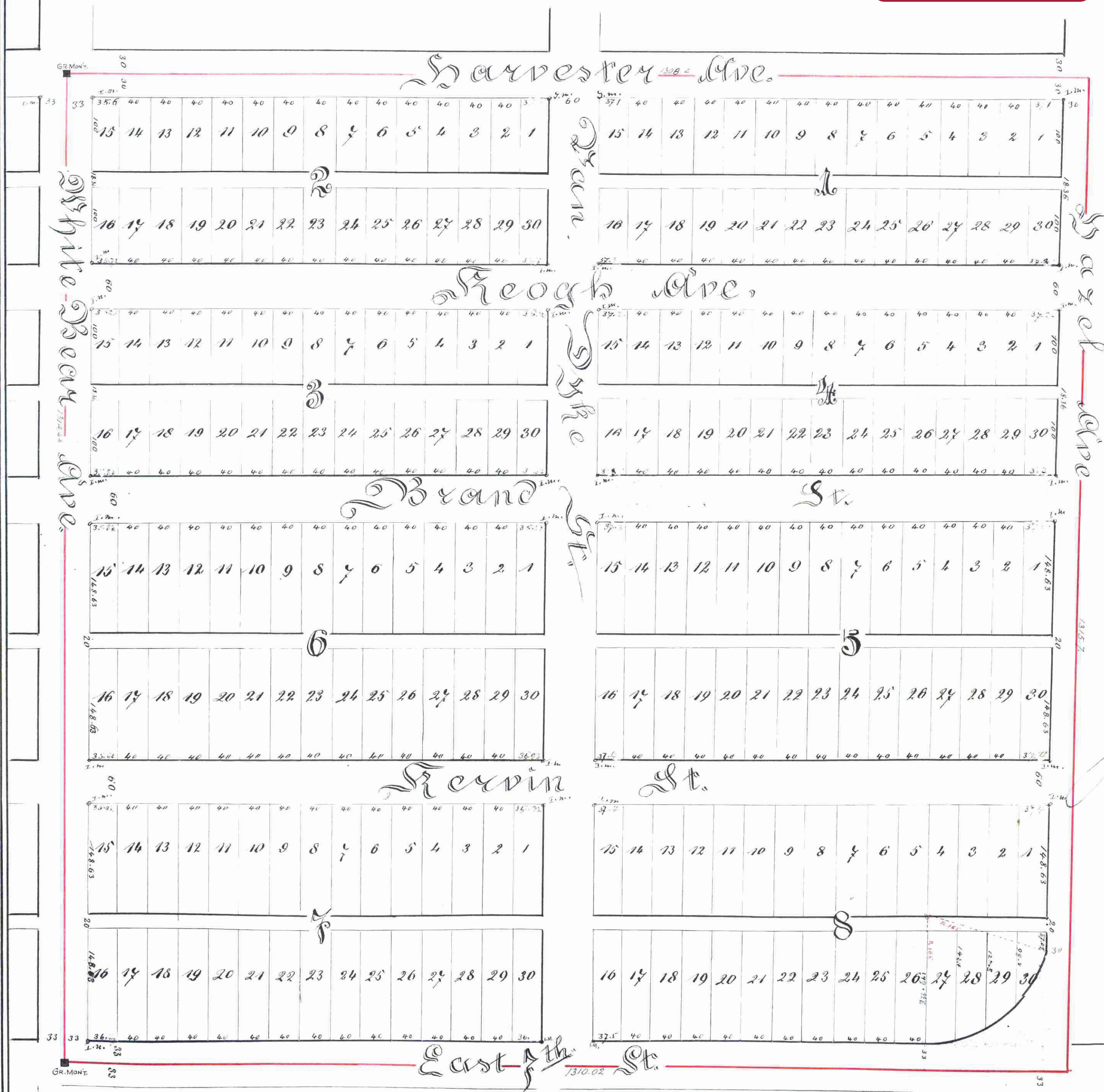


Hazel Park Division 4

This plat document is an UNOFFICIAL copy of a Subdivision Plat or Registered Land Survey and is made available for information purposes only.



To obtain an official copy please contact the Ramsey County Recorder's Office.



I hereby certify to having surveyed and platted the property as described on this map as Hazel Park Division 4 and have placed iron monuments at the corners of each and every block as shown on this map, and the same is correct

Ed. Hoenek
Surveyor

State of Minnesota } ss.
County of Ramsey }

On this twenty ninth of November 1888 personally appeared before the undersigned Ed. Hoenek to me well known, and acknowledged that he executed the foregoing certificate as his own free act and deed

Notary Public
Ramsey Co. Minn.

This is to certify that George J. Van Duzee and Hannah Van Duzee his wife, proprietors of the North West Quarter of the South West Quarter of Sec. 26 Town 29 N. Range 22 W. have caused the same to be surveyed and platted and hereafter known as Hazel Park Division 4 as shown by this plat, and hereby dedicate to the public and for the public use forever, all the streets, avenues and alleys, as herein indicated

Witness our hands and seals, this 26th day of Sept 1890

In presence of

Hannah Van Duzee }
George J. Van Duzee }
Witnesses

Accepted and approved this 12th day of December 1890

Accepted by the common council of the city of St. Paul on the 6th day of November 1890

City Clerk

Notary Public
Dubuque Co. Iowa

Assessments Paid November 8th 1890

George J. Van Duzee
City Treasurer
St. Paul

Office of County Treasurer,
ST. PAUL, MINN.
NOV 10 1890
1889 TAX PAID.
A. N. NELSON, County Treasurer.

Taxes Paid and Transfer Entered,
NOV 11 1890
M. F. KAIN, County Auditor,
Per [Signature]

No 125921
STATE OF MINNESOTA } ss.
County of Ramsey }

Office of the Register of Deeds.
This is to certify that the within instrument was filed for record in this office, on the 12th day of December 1890, and that the same was duly recorded in Book 1... page 2...

By [Signature] Register of Deeds

25.

1789