

BERNARDINE ADDITION

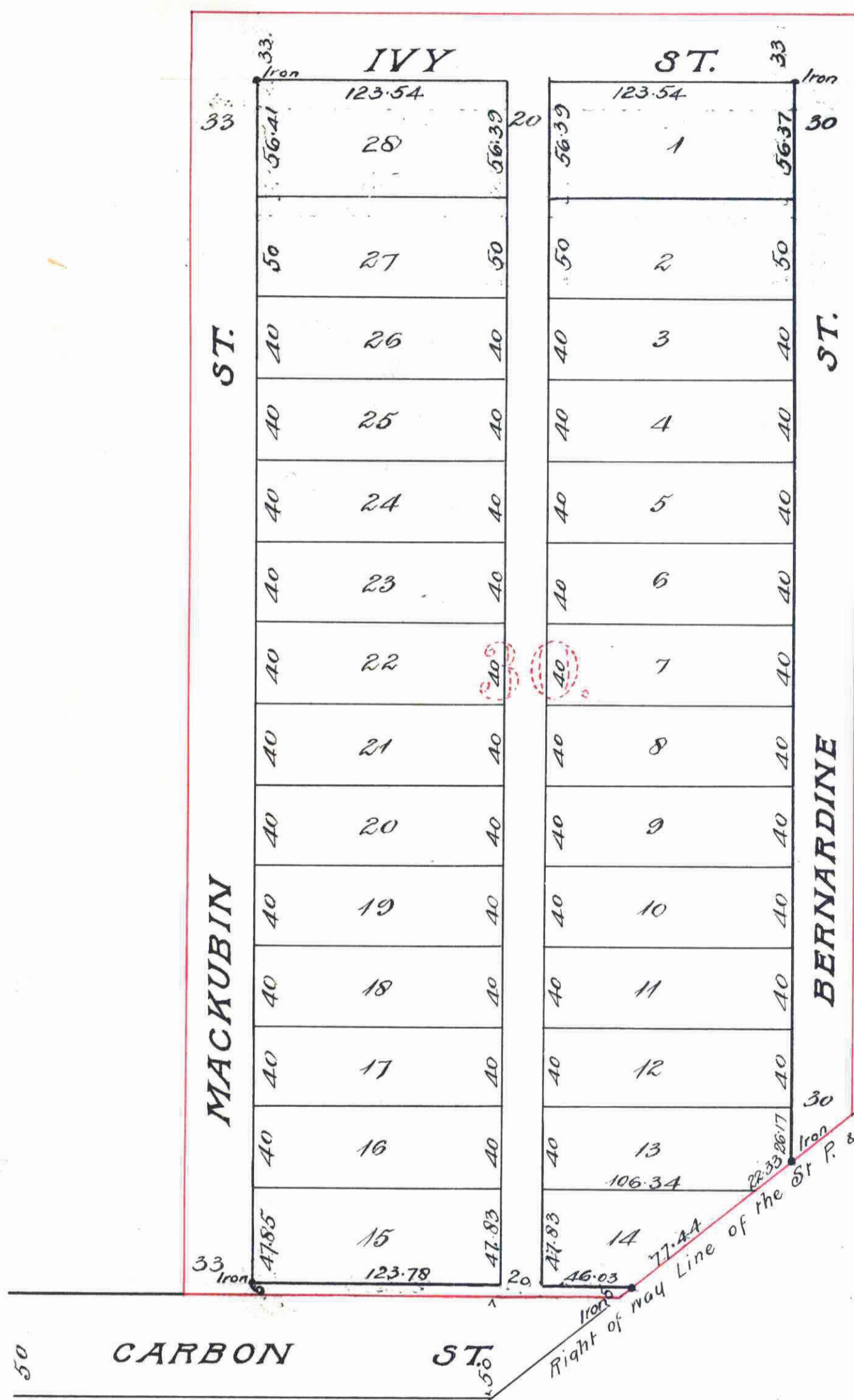
— TO THE —

CITY OF ST. PAUL RAMSEY Co.

— MINN —

Scale 60 ft = 1 in.

Saulez & Saulez
Surveyors.



This plat document is an UNOFFICIAL copy of a Subdivision Plat or Registered Land Survey and is made available for information purposes only.

To obtain an official copy please contact the Ramsey County Recorder's Office.

STATE OF MINNESOTA
County of Ramsey
Office of the Register of Deeds
This is to certify that the within instrument was filed for record in this office, at St. Paul, on the 18th day of September, A. D. 1890, at 10 o'clock A. M., and that the same was duly recorded in Book 100 at page 223.

This is to certify that the St. Joseph's Female Academy of the City of St. Paul, proprietors of Lot 30 Cottage Homes, have caused the same to be surveyed and platted, and hereafter known as - "Bernardine Addition to the City of St. Paul Ramsey Co. Minn." as shown by this plat, and hereby dedicate to the Public and for the Public use forever, all the streets and alley as herein indicated. Witness our hands and seals and the Corporate Seal of said Corporation, this 4th day of August A.D. 1890

In presence of
 Thomas Howard } *Sister Seraphine Ireland* (Seal) as President
 J. J. Donnelly } *Sister St. Rose Mackay* (Seal) as Secretary

State of Minnesota } s.s.
 County of Ramsey } On this fourth day of August A.D. 1890 before me appeared Sister Seraphine Ireland and Sister St. Rose Mackay, to me personally known, who, being by me duly sworn, did say that she, Sister Seraphine Ireland was the President and that she, Sister St. Rose Mackay was the Secretary of St. Joseph's Female Academy of the City of St. Paul, and that the seal affixed to said instrument is the Corporate Seal of said Corporation, by authority of its Board of Directors, and said Sister Seraphine Ireland and said Sister St. Rose Mackay acknowledged said instrument to be the free act & deed of said Corporation

J. J. Donnelly
Notary Public, Ramsey Co. Minn.

We hereby certify to having surveyed and platted the property as described on this map as "Bernardine Addition to the City of St. Paul Ramsey Co. Minn." and have placed iron monuments at the Block Corners as shown on this map, and the same is correct

Saulez & Saulez
Surveyors

State of Minnesota }
 County of Ramsey } s.s. On this 27 day of August A.D. 1890 before me personally appeared Harry L. Saulez, to me known to be a member of the firm of 'Saulez & Saulez', and the person who executed the foregoing certificate in behalf of 'Saulez & Saulez', and he acknowledged that he executed the same as the free act & deed of said 'Saulez & Saulez'

E. Shannon
Notary Public, Ramsey Co. Minn.

Accepted and approved this 11th day of September, A.D. 1890

W. A. Somers } Plat Commissioners
 William E. Bouton }
 City Engineer

Accepted by the Common Council of the City of St. Paul on the 2nd day of September A.D. 1890

Thomas C. ...
City Clerk

Taxes Paid and Transfer Entered
 SEP 9 1890
 M. F. KAIN, County Auditor.

CITY TREASURER'S OFFICE
 ST. PAUL, MINN.
 SEP 6 1890
 ASSESSMENTS PAID

Office of County Treasurer,
 ST. PAUL, MINN.
 SEP 8 1890
 1890 TAX PAID.
 A. N. BELSON, County Treasurer.

12