

This plat document is an UNOFFICIAL copy of a Subdivision Plat or Registered Land Survey and is made available for information purposes only.



To obtain an official copy please contact the Ramsey County Recorder's Office.

STATE OF MINNESOTA, ss.
County of Ramsey,
OFFICE OF THE REGISTER OF DEEDS.
This is to certify that the within instrument was filed for Record in this office, at St. Paul, on the 31st day of March, A. D. 1885 at 5 o'clock P. M., and that the same was duly recorded in Book W of Plata pages 38.
R. E. Wiley, Register of Deeds.
By _____ Deputy.

38

CHUTE BROTHERS

Division No. 16

ADDITION

To the
City of St. Paul

Scale: 1 in. = 50 ft.

We, Richard Chute and Mary E. Chute his wife by Samuel H. Chute their Attorney in Fact and Samuel H. Chute and Helen E. A. Chute his wife, all of the City of Minneapolis and County of Hennepin the undersigned owners of the west half (1/2) of the west half (1/2) of the North half (1/2) of the North half (1/2) of the North half (1/4) of Section thirty five (35), Township twenty nine (29) Range twenty three (23) west; do hereby certify to having caused the same to be surveyed and platted as "Chute Brothers Division No. 16 Addition" to the City of St. Paul, Minnesota as herein and hereon indicated and we do hereby give and dedicate to the public and for the public use forever all the streets and alleys as on this plat or map laid out and design-ated.

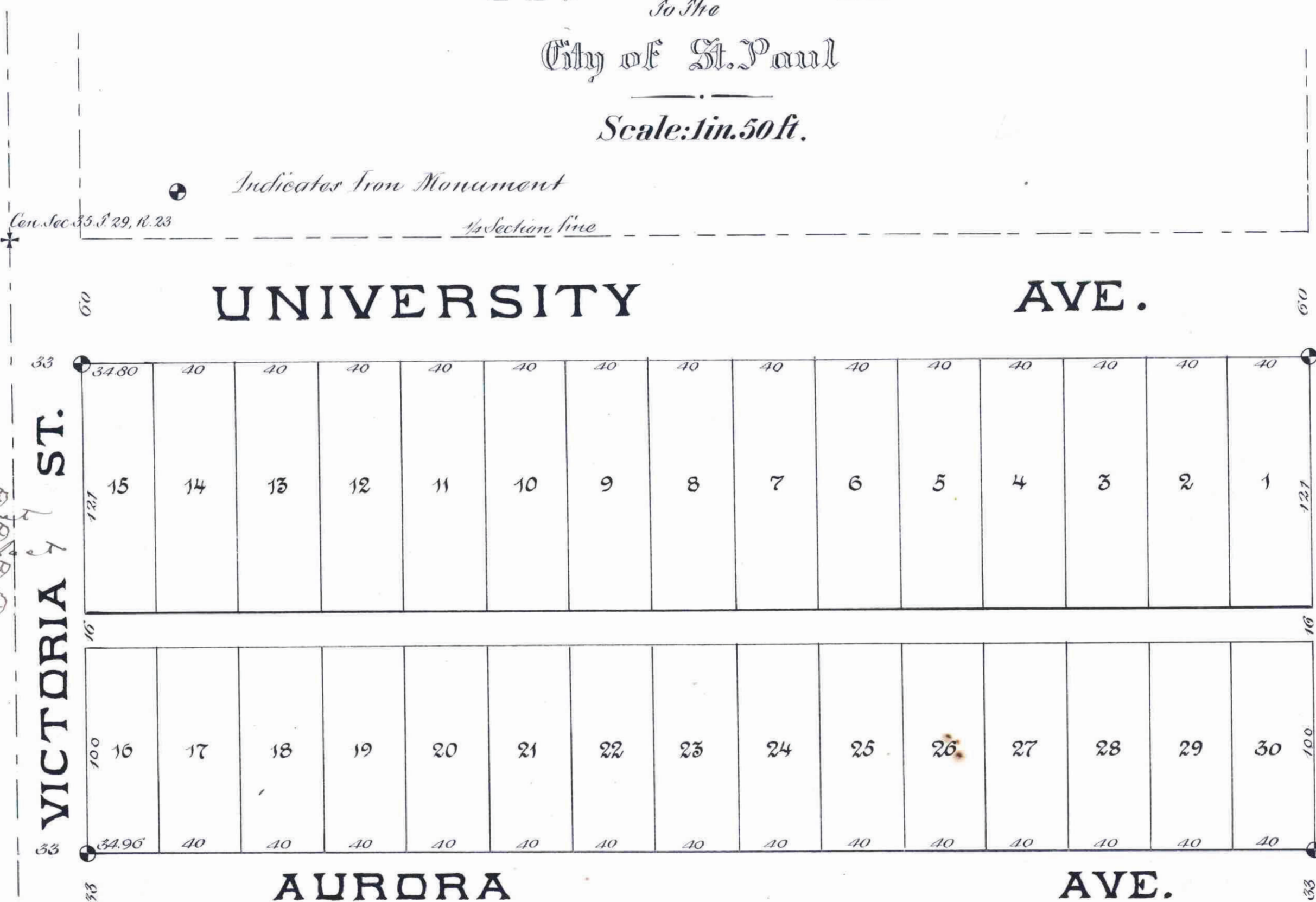
In witness whereof we have hereunto set our hands and seals this 13th day of March A. D. 1885

In presence of
Richard Chute (Seal)
Mary E. Chute (Seal)
Samuel H. Chute (Seal)
Helen E. A. Chute (Seal)

County of Hennepin } S.S.
State of Minnesota }

Be it known on the 13th day of March A. D. 1885, personally appeared before me Samuel H. Chute and Helen E. A. Chute his wife to me personally known to be the same persons described in and who executed the foregoing instrument; and they acknowledged that they executed the same as their free act and deed; and, also, at the same time appeared before me Samuel H. Chute as the Attorney in Fact of Richard Chute and Mary E. Chute his wife to me known to be the persons described herein and he acknowledged that he executed this instrument in behalf of the said Richard Chute and Mary E. Chute and as their free act and deed

Samuel H. Chute
Notary Public
Hennepin County
Minn.



Indicates Iron Monument
Section Line

I hereby certify to having surveyed and platted the property as described on this map as "Chute Brothers Division No. 16 Addition" to the City of St. Paul, Minnesota; and have placed iron monuments at the corners of the block as hereon on this map shown and the same is correct.

J. S. Johnson
Surveyor.

City Engineers Office
March 17th 1885

I have examined this plat and recommend that it be approved and accepted by the Common Council of St. Paul

L. W. Randall
City Engineer

St. Paul March 20 1885

I certify that "Chute Brothers Division No. 16 Addition to the City of St. Paul, Minnesota," as exhibited on this plat was accepted by the Common Council on the 17th day of March 1885, as an addition to this City

Wm. J. Deegan
City Clerk
St. Paul, Minnesota

Auditors Office
Ramsey Co., Minnesota
Taxes paid and transfer return Mch. 26/85

Wm. J. Deegan
County Auditor

Wm. J. Deegan
City Treasurer's Office
St. Paul, Minnesota 1885

Assessments for local improvements paid

City Treasurer

St. Paul March 14 1885

Examined and Approved
J. S. Johnson
J. W. Starkey
Wm. J. Deegan
} Plat Commission

We hereby certify that this plat or map is a true and correct copy of an original plat or map of said "Chute Brothers Division No. 16 Addition to the City of St. Paul, Minnesota," this day approved, signed, and accepted by this Commission

Dated St. Paul March 14 1885

J. S. Johnson
J. W. Starkey
Wm. J. Deegan
} Plat Commission

CITY TREASURER'S OFFICE
ST. PAUL, MINN.
MAR 20 1885
ASSESSMENTS PAID
George Ross
CITY TREAS.