

This plat document is an UNOFFICIAL copy of a Subdivision Plat or Registered Land Survey and is made available for information purposes only.

To obtain an official copy please contact the Ramsey County Recorder's Office.



STATE OF MINNESOTA, } ss.  
County of Ramsey, }  
OFFICE OF THE REGISTER OF DEEDS.  
This is to certify that the within instrument was filed for Record in this office, at St. Paul, on the 31<sup>st</sup> day of March A. D. 1885 at 2 o'clock P. M., and that the same was duly recorded in Book W of Plate pages 36  
By R. C. Wiley Register of Deeds.  
Deputy.

36

# CHUTE BROTHERS DIVISION NO. 14 ADDITION TO THE CITY of ST. PAUL

Scale: 111.50 ft.

We, Richard Chute and Mary E. Chute his wife by Samuel H. Chute their Attorney in Fact and Samuel H. Chute and Helen E. A. Chute his wife all of the City of Minneapolis and County of Hennepin, the undersigned owners of the West half(1/2) of the North half(1/2) of the North half(1/2) of the South half(1/2) of the Northeast quarter(1/4) of Section thirty-five (35), - Township twenty-nine (29) Range twenty-three (23) west; do hereby certify to having caused the same to be surveyed and platted as "Chute Brothers Division No. 14 Addition" to the City of St. Paul, Minnesota as herein and hereon indicated and we do hereby give and dedicate to the public for the public use forever all the streets and alleys as on this plat or map laid out and designated.

In Witness whereof we have hereunto set our hands and seals this 13<sup>th</sup> day of March A. D. 1885

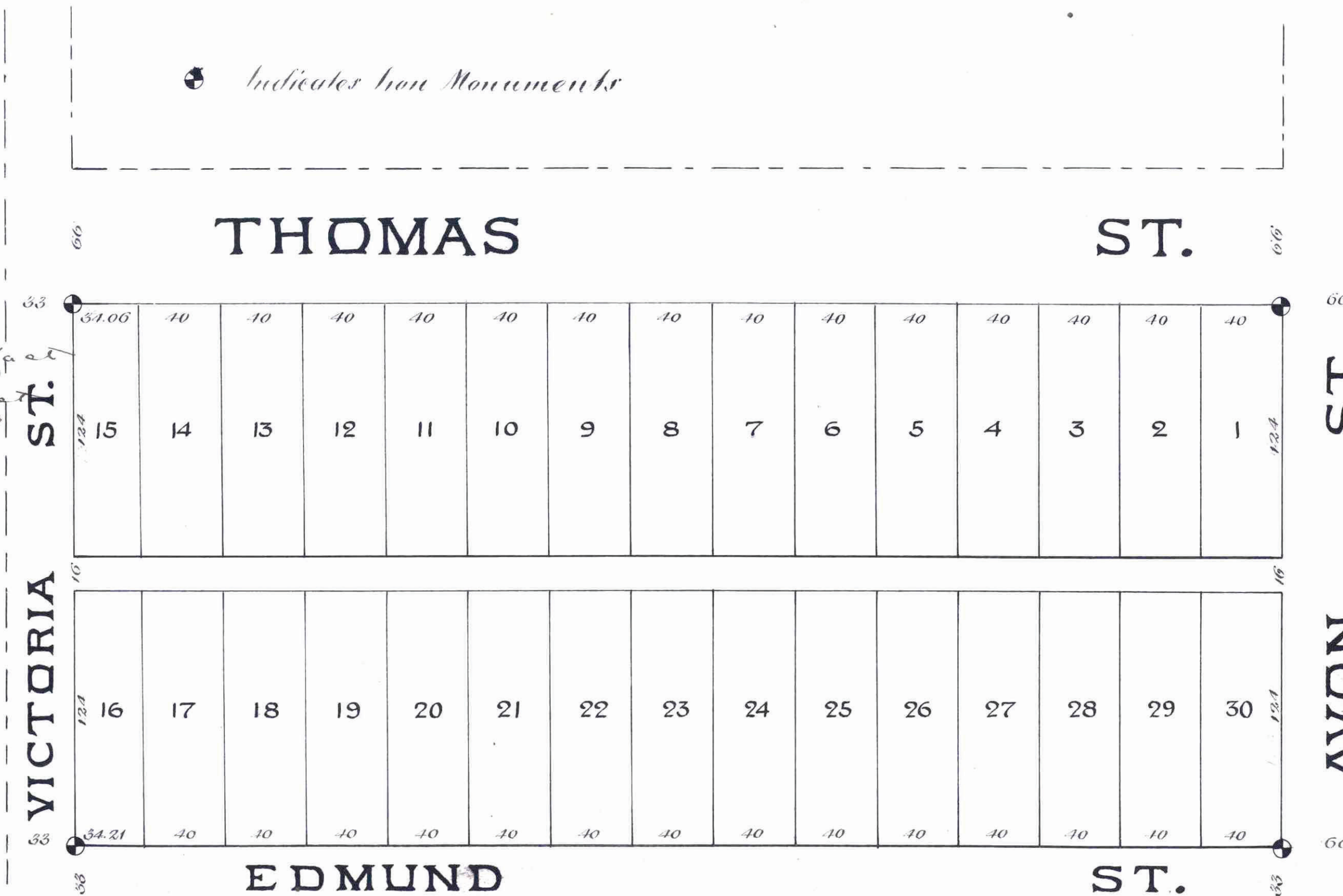
In presence of  
Richard Chute  
Mary E. Chute  
Samuel H. Chute  
Helen E. A. Chute

County of Hennepin } s.s.  
State of Minnesota }

Be it known on the 13<sup>th</sup> day of March A. D. 1885, personally appeared before me Samuel H. Chute and Helen E. A. Chute his wife to me personally known to be the same persons described in and who executed the foregoing instrument and they acknowledged that they executed the same as their free act and deed and also at the same time appeared before me Samuel H. Chute as the Attorney in Fact of Richard Chute and Mary E. Chute his wife to me known to be the persons described herein and he acknowledged that he executed this instrument in behalf of the said Richard Chute and Mary E. Chute and as their free act and deed.

Witness my hand and Notarial seal  
Chas. R. Chute  
Notary Public  
Hennepin County,  
Minn.

Indicates Iron Monuments



I hereby certify to having surveyed and platted the property as described on this map as Chute Brothers Division No. 14 Addition to the City of St. Paul, Minnesota; and have placed iron monuments at the corners of the block, as hereon on this map shown and the same is correct.

J. P. A. Howe  
G. A. Johnson  
Surveyors

City Engineer's Office  
March 17<sup>th</sup> 1885

I have examined this plat and recommend that it be approved and accepted by the - Common Council of St. Paul

L. W. ...  
City Engineer

St. Paul, March 20 1885

I certify that "Chute Brothers' Division No. 14 Addition to the City of St. Paul, Minnesota, as exhibited on this plat was accepted by the Common Council on the 17<sup>th</sup> day of March 1885, as an addition to this City

...  
City Clerk  
St. Paul, Minnesota

Auditor's Office  
Ramsey Co., Minnesota

Taxes paid and treasurer returned March 16<sup>th</sup> 1885

...  
County Auditor  
Geo. ...

City Treasurer's Office  
St. Paul, Minnesota

1885

Assessments for local improvements paid

City Treasurer.

St. Paul March 14 1885  
Examined and Approved  
S. P. Johnson  
Chas. Starkey  
W. A. Audyke } Plat Commission

We hereby certify that this plat or map is a true and correct copy of an original plat or map of said "Chute Brothers Division No. 14, Addition to the City of St. Paul, Minnesota" this day approved, signed, and accepted by this Commission  
Dated: St. Paul, March 14, 1885

S. P. Johnson  
Chas. Starkey  
W. A. Audyke } Plat Commission

CITY TREASURER'S OFFICE  
ST. PAUL, MINN.  
MAR 20 1885  
ASSESSMENTS PAID  
George ...  
CITY TREAS.

W. A. Audyke