

This plat document is an UNOFFICIAL copy of a Subdivision Plat or Registered Land Survey and is made available for information purposes only.



To obtain an official copy please contact the Ramsey County Recorder's Office.

# CHUTE BROTHERS DIVISION NO. 12 ADDITION TO THE CITY OF ST. PAUL

Scale 1 in. = 50 ft.

STATE OF MINNESOTA, ss.  
County of Ramsey,  
OFFICE OF THE REGISTER OF DEEDS.  
This is to certify that the within instrument was filed for Record in this office, at St. Paul, on the 31<sup>st</sup> day of March A. D. 1885 at 5 o'clock P. M., and that the same was duly recorded in Book W of Plats pages 34  
By R. W. Wiley Register of Deeds.  
Deputy.

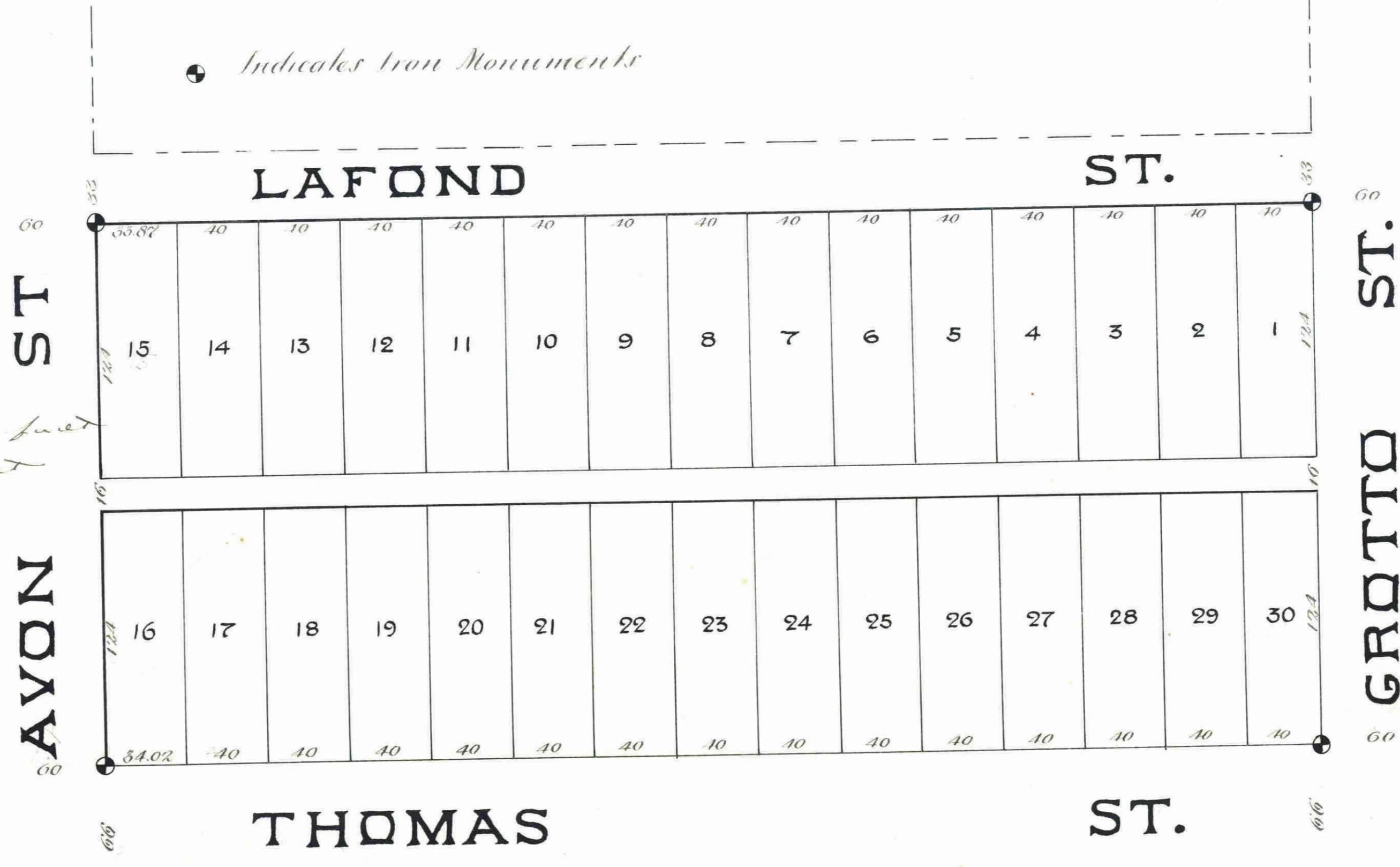
34

We, Richard Chute and Mary E. Chute his wife by Samuel H. Chute their Attorney in fact and Samuel H. Chute and Helen E. A. Chute his wife, all of the City of Minneapolis and County of Hennepin the undersigned owners of the East half (1/2) of the West half (1/2) of the South half (1/2) of the South half (1/2) of the North half (1/2) of the North east quarter (1/4) of section thirty-five (35) Township twenty-nine (29) Range twenty-three (23) West, do hereby certify to having caused the same to be surveyed and platted as "Chute Brothers Division No. 12 Addition" to the City of St. Paul, Minnesota as herein and hereon indicated and we do hereby give and dedicate to the public and for the public use forever all the streets and alley as on this map or plat laid out and designated.

In witness whereof we have hereunto set our hands and seals this 13<sup>th</sup> day of March A. D. 1885  
Richard Chute  
Mary E. Chute  
Charles R. Chute  
Samuel H. Chute  
Helen E. A. Chute

County of Hennepin } s.s.  
State of Minnesota }  
Be it known on the 13<sup>th</sup> day of March A. D. 1885 personally appeared before Samuel H. Chute and Helen E. A. Chute his wife to me personally known to be the same persons described in and who executed the foregoing instrument and they acknowledged that they executed the same as their free act and deed; and, also, at the same time appeared before me Samuel H. Chute as the Attorney in fact of Richard Chute and Mary E. Chute his wife, to me known to be the persons described herein and he acknowledged that he executed this instrument in behalf of the said Richard Chute and Mary E. Chute as their free act and deed.

Charles R. Chute  
Notary Public  
Hennepin County,  
Minn.



I hereby certify to having surveyed and platted the property as described on this map as "Chute Brothers Division No. 12 Addition" to the City of St. Paul, Minnesota and have placed iron monuments at the corners of the block as shown on this map, and the same is correct.

J. P. A. Howe  
City Engineer

City Engineers Office  
Mar 17<sup>th</sup> 1885  
I have examined this plat and recommend that it be approved by the Common Council of St. Paul  
L. W. Raymond  
City Engineer

St. Paul March 20 1885

I certify that "Chute Brothers Division No. 12 Addition" to the City of St. Paul, Minnesota, as exhibited on this plat was accepted by the Common Council on the 17<sup>th</sup> day of March A. D. 1885 as an addition to this City.  
M. J. Carver  
City Clerk  
St. Paul, Minnesota

Auditors Office  
Ramsey Co., Minnesota

Taxes paid and transferred  
County Auditor  
City Treasurer's Office  
St. Paul, Minnesota 1885

CITY TREASURER'S OFFICE  
ST. PAUL, MINN.  
MAR 20 1885  
ASSESSMENTS PAID  
George Red  
CITY TREAS.

Assessments for local improvements paid  
City Treasurer.

St. Paul Mar. 14 1885  
Examined and Approved  
J. P. Johnson  
Jas Starkey  
M. A. Sandberg } Plat Commission

We hereby certify that this plat or map is a true and correct copy of an original plat or map of said Chute Brothers Division No. 12 Addition to the City of St. Paul, Minnesota, this day approved, signed, and accepted by this Commission.  
Dated St. Paul, Mar. 14 1885  
J. P. Johnson  
Jas Starkey  
M. A. Sandberg } Plat Commission