

State of Minnesota }  
County of Ramsey } ss.

The Certificate of dedication on this plat is hereby corrected and reformed so that the tract of land in said certificate described shall be the East half (E 1/2) of the West half (W 1/2) of the North half (N 1/2) of the South half (S 1/2) of the South half (S 1/2) of the North east quarter (N.E. 1/4) of Section Thirty five (35) in Township Twenty nine (29) of Range Twenty three (23) in said Ramsey County, Minnesota pursuant to the decree of the District Court 2<sup>d</sup> Judicial District Ramsey County Minnesota duly made and entered in that behalf on the 16<sup>th</sup> day of July A.D. 1857 Court files 26043 and a certified copy of which decree has been duly recorded in the office of the Register of Deeds in and for said Ramsey County in Book 177 of Deeds pages 595, 596 and 597 on the 19<sup>th</sup> day of July A.D. 1857 at 10 o'clock A.M. Witness my hand and official seal this 19<sup>th</sup> day of July A.D. 1857.

*[Signature]*  
Register of Deeds  
Ramsey County, Minn.

# CHUTE BROTHERS DIVISION NO. 10

## ADDITION

TO THE  
CITY OF ST. PAUL

Scale: 1 in. = 50 ft.

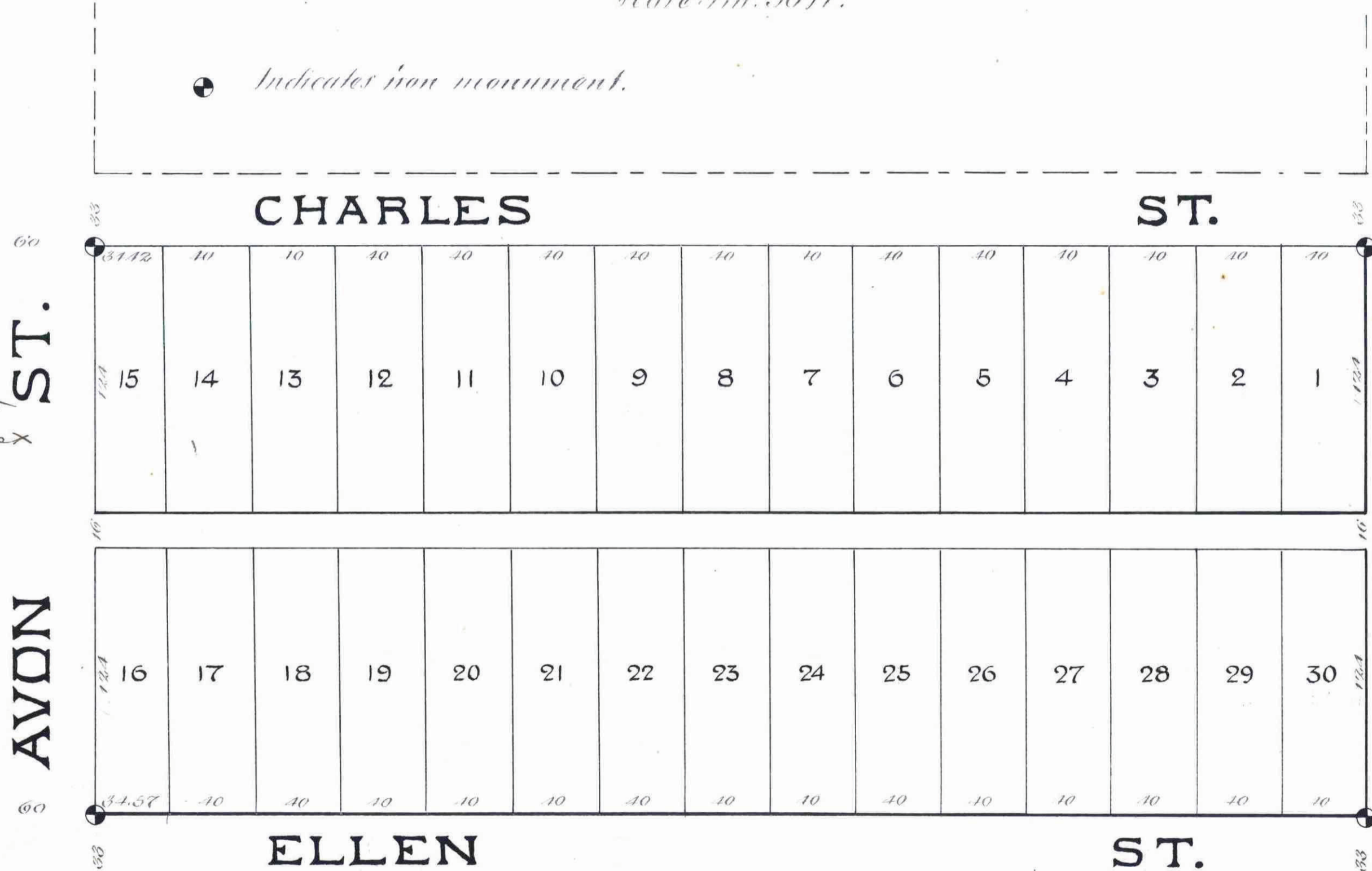
● Indicates iron monument.

We, Richard Chute and Mary E. Chute his wife by Samuel H. Chute their Attorney in fact and Samuel H. Chute and Helen E. A. Chute his wife, all of the City of Minneapolis and County of Hennepin the undersigned owners of the East half (E 1/2) of the West half (W 1/2) of the North half (N 1/2) of the South half (S 1/2) of the Northeast quarter (N.E. 1/4) of section thirty five (35) Township twenty nine (29) Range twenty three (23) west, do hereby certify to having caused the same to be surveyed and plotted, as herein and hereon indicated, and we do hereby give and dedicate to the public and for the public use forever all the streets and alley as on this map or plat laid out and designated.

In witness whereof, we have hereunto set our hands and seals this 13<sup>th</sup> day of March A.D. 1885  
In presence of  
Mary E. Chute  
Helen E. A. Chute  
Samuel H. Chute  
Helen E. A. Chute

County of Hennepin } s. s.  
State of Minnesota }  
Be it known on the 13<sup>th</sup> day of March A.D. 1885, personally appeared before me Samuel H. Chute and Helen E. A. Chute his wife, to me personally known to be the same persons described in and who executed the foregoing instrument and they acknowledged that they executed the same as their free act and deed and also at the same time appeared before me Samuel H. Chute as the Attorney in fact of Richard Chute and Mary E. Chute his wife, to me known to be the persons described herein and he acknowledged that he executed this instrument in behalf of the said Richard Chute and Mary E. Chute and as their free act and deed

*Chute*  
Notary Public  
Hennepin County,  
Minn.



St. Paul March 14 1885  
Examined and Approved  
*[Signatures]*  
Stat Commission

We hereby certify that this plat or map is a true and correct copy of an original plat or map of said "Chute Brothers Division No. 10 Addition to the City of St. Paul, Minnesota," this day approved, signed, and accepted by this Commission  
Dated St. Paul March 14 1885  
*[Signatures]*  
Stat Commission

CITY TREASURER'S OFFICE  
ST. PAUL, MINN.  
MAR 20 1885  
ASSESSMENTS PAID  
*[Signature]*  
CITY TREAS.

I hereby certify to having surveyed and plotted the property as described on this map as "Chute Brothers Division No. 10 Addition" to the City of St. Paul, Minnesota; and have placed iron monuments at the corners of the block, as hereon on this map shown and the same is correct  
*[Signature]*  
Surveyor

City Engineers Office  
March 17<sup>th</sup> 1885

I have examined this plat and recommend that it be approved and accepted by the Common Council of St. Paul  
*[Signature]*  
City Engineer  
St. Paul March 20 1885

I certify that "Chute Brothers Division No. 10 Addition" to the City of St. Paul, Minnesota as exhibited on this plat was accepted by the Common Council on the 17<sup>th</sup> day of March A.D. 1885 as an addition to this City  
*[Signature]*  
City Clerk,  
St. Paul, Minnesota

Auditors Office  
Ramsey Co. Minnesota  
Taxes paid and transfer returned March 14, 1885  
*[Signature]*  
City Auditors Office  
St. Paul, Minnesota 1885  
Assessments for local improvements paid  
City Treasurer.

STATE OF MINNESOTA }  
County of Ramsey } ss.  
OFFICE OF THE REGISTER OF DEEDS.  
This is to certify that the within instrument was filed for Record in this office, at St. Paul, on the 21<sup>st</sup> day of March A. D. 1885 at 2 o'clock P. M., and that the same was duly recorded in Book 177 of Deeds pages 595, 596 and 597.  
*[Signature]*  
Register of Deeds.  
By \_\_\_\_\_ Deputy.

This plat document is an UNOFFICIAL copy of a Subdivision Plat or Registered Land Survey and is made available for information purposes only.  
To obtain an official copy please contact the Ramsey County Recorder's Office.