

24

STATE OF MINNESOTA, } ss.  
County of Ramsey.  
OFFICE OF THE REGISTER OF DEEDS.  
This is to certify that the within instrument was filed for record in this office, at St. Paul, on the 7th day of March, A. D. 1885 at 2:30 o'clock P. M., and that the same was duly recorded in Book IV of Plats pages 24.  
R. C. Wiley  
Register of Deeds.  
By \_\_\_\_\_ Deputy.

# CHUTE BROTHERS' DIVISION NO 6

ADDITION TO THE CITY OF ST PAUL MINN

SCALE: FIFTY FEET TO ONE INCH

This plat document is an UNOFFICIAL copy of a Subdivision Plat or Registered Land Survey and is made available for information purposes only.  
To obtain an official copy please contact the Ramsey County Recorder's Office.

I hereby certify to having surveyed and platted the property as described on this map as Chute Brothers' Division No 6 Addition to the city of St. Paul, Minn. and have placed iron monuments at the corners of the block as herein on this map shown and the same is correct.  
S. P. Johnson  
Surveyor

We, Richard Chute and Mary E. Chute, his wife, by Samuel H. Chute their attorney in fact, and Samuel H. Chute and Helen E. A. Chute, his wife, all of the city of Minneapolis and county of Hennepin, the undersigned owners of the west half of the east half of the north half of the north half of the south half of the northeast quarter of Section 35, Township 29, Range 23, do hereby certify to having caused the same to be surveyed and platted as Chute Brothers' Division No 6 Addition to the city of St. Paul, Minn. as herein and hereon indicated and we do hereby give and dedicate to the public and for public use forever, all the streets and alley as on this map or plat laid out and designated.  
In witness whereof we have hereunto set our hands and seals this 28th day of Feb. A.D. 1885.  
In presence of Samuel H. Chute  
Richard Chute  
Mary E. Chute  
Samuel H. Chute his atty in fact  
Samuel H. Chute  
Helen E. A. Chute

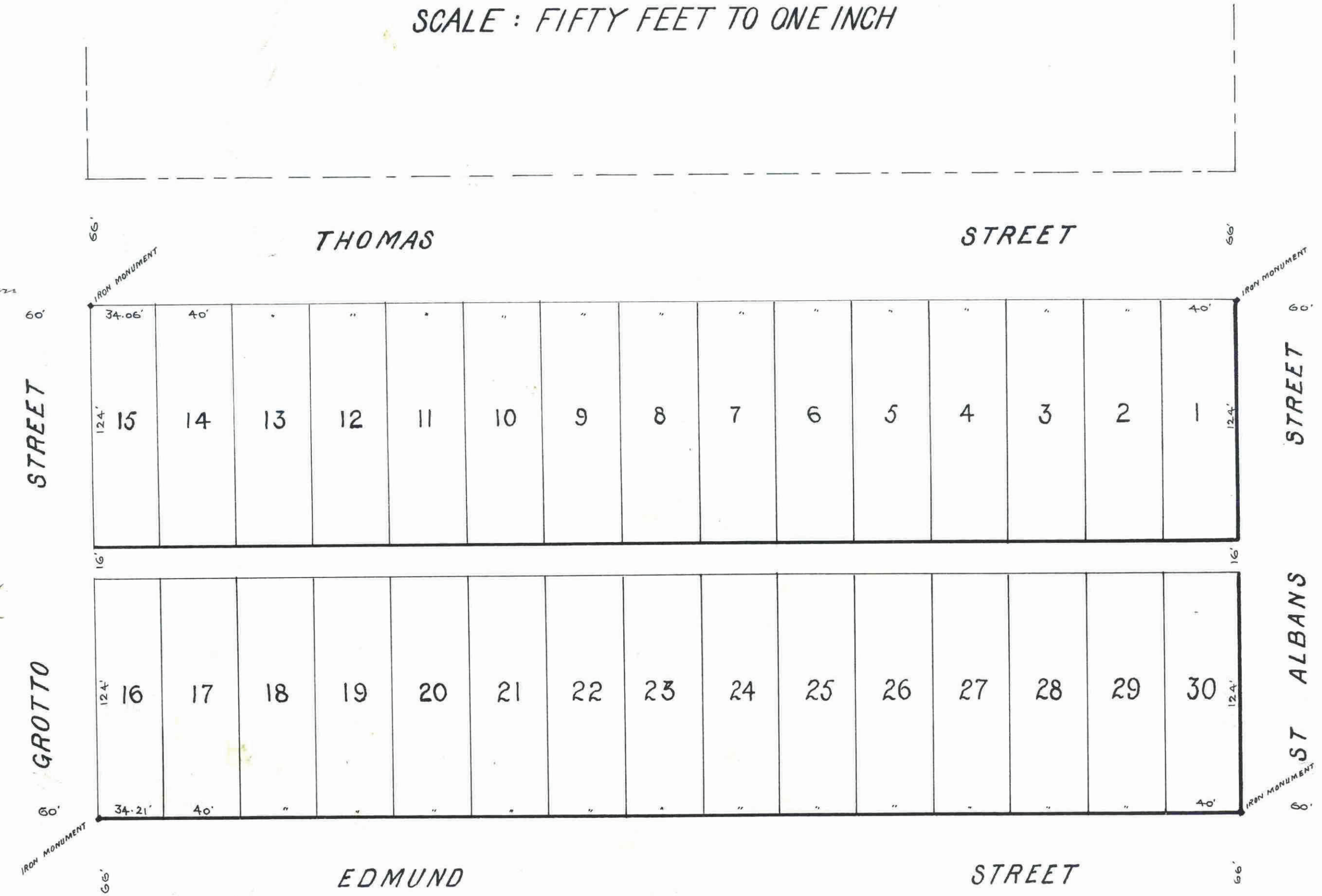
Be it known that on this 28th day of February A.D. 1885 personally appeared before me Samuel H. Chute and Helen E. A. Chute, his wife to me personally known, to be the same persons described in and who executed the foregoing instrument and they acknowledged that they executed the same as their free act and deed, and also at the same time appeared before me Samuel H. Chute as the attorney in fact of Richard Chute and Mary E. Chute, his wife, to me known to be the persons described herein and he acknowledged that he executed this instrument in behalf of the said Richard Chute and Mary E. Chute and as their free act and deed.  
Charles R. Chute Attorney Public  
St. Paul, Minn.

Examined and approved.  
St. Paul Feb. 28th 1885  
H. P. McLaughlin  
Plat Commission.  
D. S. Stanley

I have examined this plat and recommend that it be approved and accepted by the Common Council of St. Paul.  
W. A. Jones  
City Engineer  
St. Paul, Minn. 1885

I certify that Chute Brothers' Division No 6 Addition to the city of St. Paul, Minn. as exhibited on this plat was accepted by the Common Council on the 11th day of March 1885 as an addition to this city.  
W. A. Jones  
City Clerk, St. Paul, Minn.

Auditor's Office, Ramsey County, Minn.  
Taxes paid on this plat as shown on the plat of 1885  
County Auditor  
City Treasurer, St. Paul, Minn. 1885  
Assessments for local improvements paid.  
No 6  
City Treasurer



CITY TREASURER'S OFFICE  
ST. PAUL, MINN.  
MAR 6 1885  
ASSESSMENTS PAID  
George A. Jones  
CITY TREAS.  
Charles R. Chute