

22 ✓

STATE OF MINNESOTA, ss
 County of Ramsey,
 OFFICE OF THE REGISTER OF DEEDS.
 This is to certify that the within instrument was filed for Record in this office, at St. Paul, on the 7th day of March, A. D. 1885 at 2:20 o'clock P. M., and that the same was duly recorded in Book W of Plats pages 22.
 R. C. Torley
 Register of Deeds.
 By _____ Deputy.

CHUTE BROTHERS' DIVISION NO 4

ADDITION TO THE CITY OF ST PAUL, MINN

SCALE : FIFTY FEET TO ONE INCH

This plat document is an UNOFFICIAL copy of a Subdivision Plat or Registered Land Survey and is made available for information purposes only.
 To obtain an official copy please contact the Ramsey County Recorder's Office.

I hereby certify to having surveyed and platted the property as described on this map as Chute Brothers' Division No 4, Addition to the city of St. Paul, Minn. and have placed iron monuments at the corners of the block as hereon on this map shown and the same is correct.

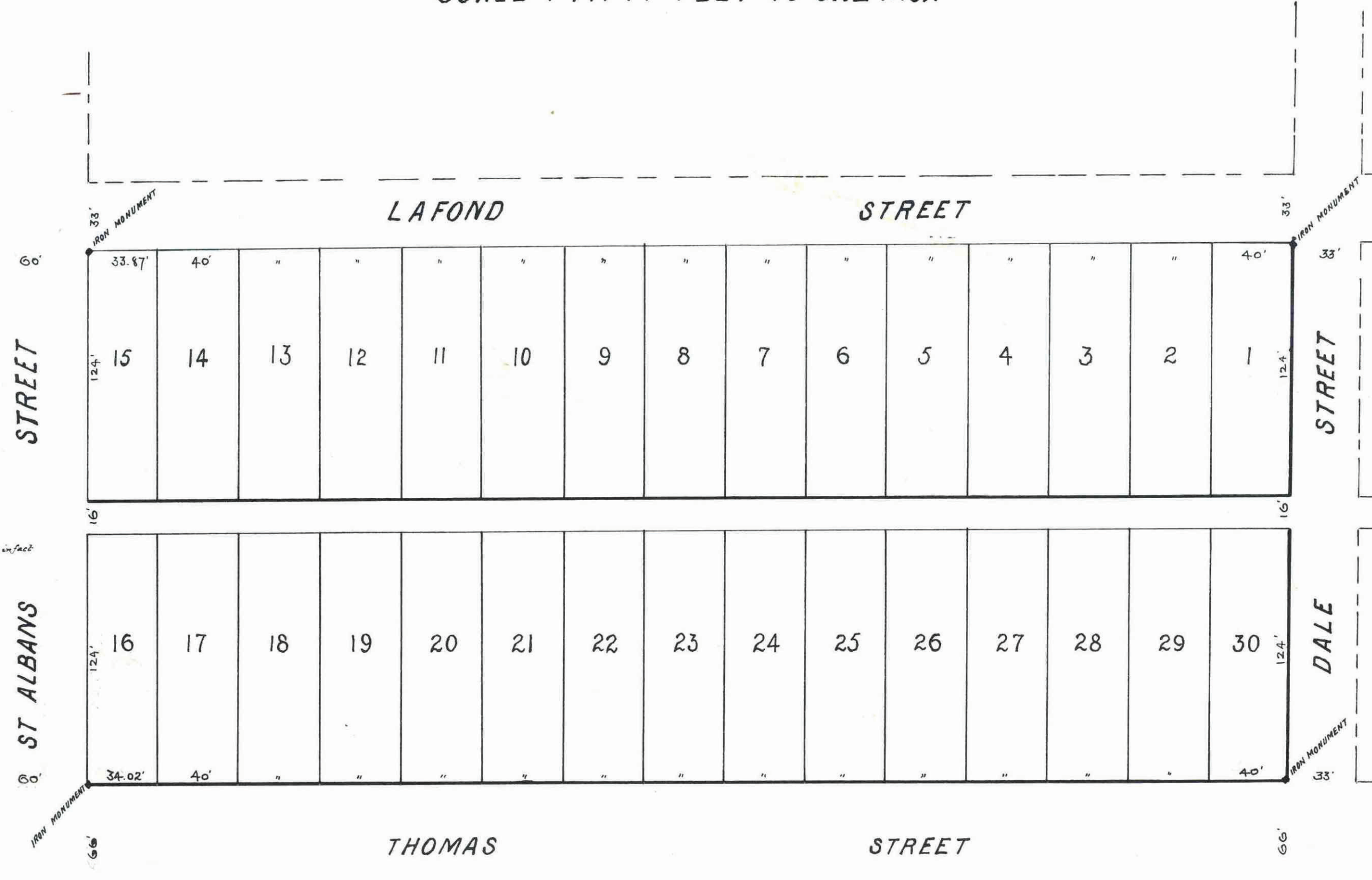
J. P. A. Howe
 Surveyor.
 We, Richard Chute and Mary E. Chute, his wife, and Samuel H. Chute and Helen E. A. Chute, his wife, all of the city of Minneapolis and county of Hennepin, the undersigned owners of the east quarter of the south half of the south half of the north east quarter of Section 35, Township 29, Range 23, do hereby certify to having caused the same to be surveyed and platted as Chute Brothers' Division No 4, Addition to the city of St. Paul, Minn. as herein and hereon indicated and we do hereby give and dedicate to the public and for public use forever all the streets and alley as on this map or plat laid out and designated.
 In witness whereof we have hereunto set our hands and seals this 13th day of February A.D. 1885.
Samuel H. Chute
 In presence of
Richard Chute
Mary E. Chute
Samuel H. Chute

Be it known that on this 13th day of February A.D. 1885, personally came before me, Richard Chute and Mary E. Chute, his wife, and Samuel H. Chute and Helen E. A. Chute, his wife, to me personally known to be the same persons described in and who executed the foregoing instrument and acknowledged that they executed the same as their free act and deed, and as the free act and deed of the said Richard Chute and Mary E. Chute.
Richard Chute
Mary E. Chute
 Notary Public.
 St. Paul, Minn. Feb. 14 1885.

Examined and approved.
J. P. A. Howe
 Plat Commission.
 Engineer's Office Feb 24 1885.
 I have examined this plat and recommend that it be approved and accepted by the Common Council of St. Paul.
W. A. Jones
 City Engineer.

St. Paul, Minn. Feb 24 1885
 I certify that Chute Brothers' Division No 4, Addition to the city of St. Paul, Minn. as exhibited on this plat was accepted by the Common Council on the 24th day of Feb 1885 as an addition to this city.
W. A. Jones
 City Clerk, St. Paul, Minn.

Auditor's Office, Ramsey County, Minn.
 Taxes paid (sic) *Wm. A. Jones* *Feb 7 1885*
 County Auditor.
 City Treasurer, St. Paul, Minn. 1885.
 Assessments for local improvements paid.
 City Treasurer.



CITY TREASURER'S OFFICE
 ST. PAUL, MINN.
 MAR 6 1885
 ASSESSMENTS PAID
George H. Rice
 CITY TREAS.
W. L. Chapin Deputy