

20

STATE OF MINNESOTA, 1885
County of Ramsey,
OFFICE OF THE REGISTER OF DEEDS.
This is to certify that the within instrument was filed for Record in this office, at St. Paul, on the 7th day of March, A. D. 1885 at 2:22 o'clock P. M., and that the same was duly recorded in Book W of Plate pages 20
R. C. Wiley
Register of Deeds.
Deputy.

CHUTE BROTHERS' DIVISION NO 2

ADDITION TO THE CITY OF ST PAUL, MINN

SCALE: FIFTY FEET TO ONE INCH

This plat document is an UNOFFICIAL copy of a Subdivision Plat or Registered Land Survey and is made available for information purposes only.
To obtain an official copy please contact the Ramsey County Recorder's Office.

I hereby certify to having surveyed and platted the property as described on this map as Chute Brothers Division No 2, Addition to the city of St Paul, Minn. and have placed iron monuments at the corners of the block as hereon on this map shown and the same is correct

J. P. Howe
Surveyor. Gates A. Johnson
By Samuel H. Chute their attorney in fact
We, Richard Chute and Mary E. Chute, his wife, and Samuel H. Chute and Helen E. A. Chute, his wife, all of the city of Minneapolis and County of Hennepin, do hereby certify to having caused the same to be surveyed and platted as Chute Brothers Division No 2 Addition to the city of St Paul, Minn. as herein and hereon indicated and we do hereby give and dedicate to the public and for public use forever all the streets and alley as on this map or plat laid out and designated.

In witness whereof we have hereunto set our hands and seals this 13th day of February A. D. 1885.
In presence of
Samuel H. Chute
Richard Chute
Mary E. Chute
Helen E. A. Chute
Notary Public.
St Paul, Minn. Feb 14 1885.

Be it known that on this 13th day of February A. D. 1885 personally came before me Richard Chute and Mary E. Chute, his wife, and Samuel H. Chute and Helen E. A. Chute, his wife, to me personally known to be the same persons described in and who executed the foregoing instrument and acknowledged that they executed the same as their free act and deed, and as the trial and act of said said Richard Chute and Mary E. Chute.

Notary Public.
St Paul, Minn. Feb 14 1885.

Examined and approved.
J. A. Johnson } Plat Commission.
J. A. Johnson
City Engineer.

Engineer's Office, Feb 22 1885.
I have examined this plat and recommend that it be approved and accepted by the Common Council of St Paul.

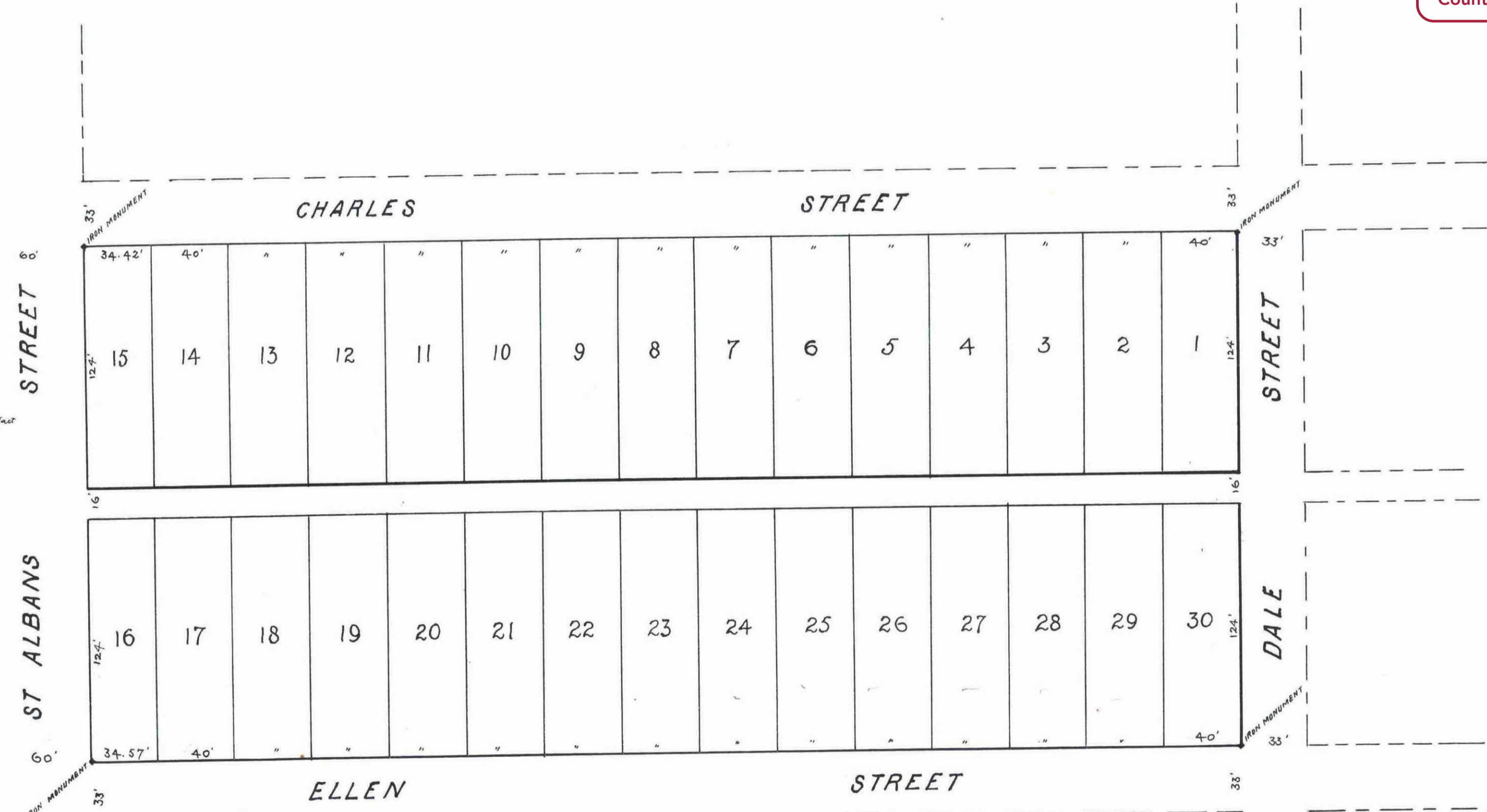
City Engineer.
St Paul, Minn. Feb 22 1885.

I certify that Chute Brothers' Division No 2, Addition to St Paul, Minn. as exhibited on this plat was accepted by the Common Council on the 27th day of March 1885 as an addition to this City.

City Clerk, St Paul, Minn.

Auditor's Office, Ramsey County, Minn.
Taxes paid and assessed to date March 21 1885
County Auditor.

City Treasurer, St Paul, Minn.
Assessments for local improvements paid.
City Treasurer.



CITY TREASURER'S OFFICE
ST. PAUL, MINN
MAR 6 1885
ASSESSMENTS PAID
W. L. Chapin Deputy