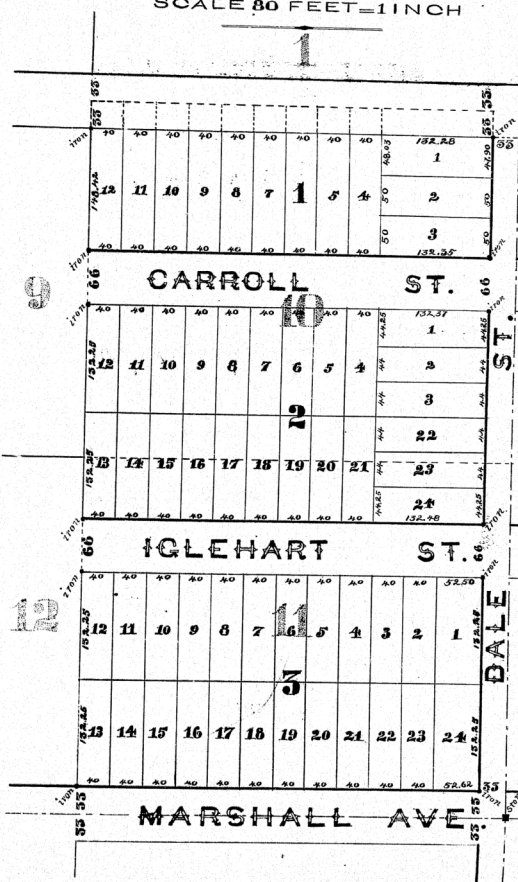


SMITH'S SUBDIVISION

of
LOTS 10 & 11

SMITH and LOTT'S 'OUT LOTS'.

SCALE 80 FEET = 1 INCH



MACKUBIN & MARSHALL'S

We the undersigned owners of Lots 10 and 11 "SMITH & LOTT'S 'OUT LOTS'" as the same is recorded in the office of the Register of Deeds of Ramsey County Minnesota, do hereby certify to having caused the same to be surveyed and platted as SMITH'S SUBDIVISION of Lots 10 and 11 "Smith & Lott's 'Out Lots'" as herein and hereon indicated, and we do hereby give and dedicate to the public and for the public use forever all the streets as on this map or plat laid out, and designated.

In witness whereof we have hereunto set our hands and seals this 6th day of July AD. 1883.

In Presence of

<i>J. W. Dodd</i>	} as to Mary E. & Gideon S. Ives	<i>Mary E. Ives</i>	Seal
<i>Geo. Montgomery</i>			
<i>Wm. M. Spackman</i>	} as to Margaret L. & William M. Spackman	<i>Margaret L. Spackman</i>	Seal
<i>Wm. M. Spackman</i>			

State of Minnesota } ss. Be it KNOWN, That on this 19th day of July AD. 1883 before me personally
County of Nicollet. } came Mary E. Ives and Gideon S. Ives, her husband, Margaret L. Spackman and
William M. Spackman, her husband to me known to be the identical persons described in and who executed the foregoing instrument and who acknowledged that they executed the same freely and voluntarily for the uses and purposes therein expressed.

State of New York } ss. Be it known, That on this 26th day of July, AD. 1883, before me personally came Margaret L. Spackman by William M. Spackman, her husband,
County of New York. } to me known to be the identical persons described in and who executed the foregoing instrument and who acknowledged that they executed the same freely and voluntarily for the uses and purposes therein expressed.

I hereby certify to having surveyed and platted the property as described on this map as SMITH'S SUBDIVISION of Lots 10 and 11 "Smith and Lott's 'Out Lots'" and have placed iron monuments at the corners of each and every BLOCK as shown on this map and the same is correct.

St. Paul Minn July 6th 1883.
L. C. Currier
Surveyor

Approved August 2^d 1883

} PLAT COMMISSION.	<i>J. W. Dodd</i>
	<i>Geo. Bentley</i>

I have examined the within plat and recommend its approval

St. Paul Minn Aug 6th 1883
W. A. James
City Engineer

Accepted by the Common Council of the City of St. Paul Minn July 7th AD 1883

Wm. M. Spackman
City Clerk.

Dates, days and hours, certain
August 1st 1883.

J. W. Dodd
City Clerk

